



# SZABO SCANDIC

Part of Europa Biosite

## Produktinformation



Forschungsprodukte & Biochemikalien



Zellkultur & Verbrauchsmaterial



Diagnostik & molekulare Diagnostik



Laborgeräte & Service

Weitere Information auf den folgenden Seiten!  
See the following pages for more information!



### Lieferung & Zahlungsart

siehe unsere [Liefer- und Versandbedingungen](#)

### Zuschläge

- Mindermengenzuschlag
- Trockeneiszuschlag
- Gefahrgutzuschlag
- Expressversand

### SZABO-SCANDIC HandelsgmbH

Quellenstraße 110, A-1100 Wien

T. +43(0)1 489 3961-0

F. +43(0)1 489 3961-7

[mail@szabo-scandic.com](mailto:mail@szabo-scandic.com)

[www.szabo-scandic.com](http://www.szabo-scandic.com)

[linkedin.com/company/szaboscandic](https://www.linkedin.com/company/szaboscandic) 

## EGFR/MET/CEN7q FISH Probe

Catalog # : FG0205

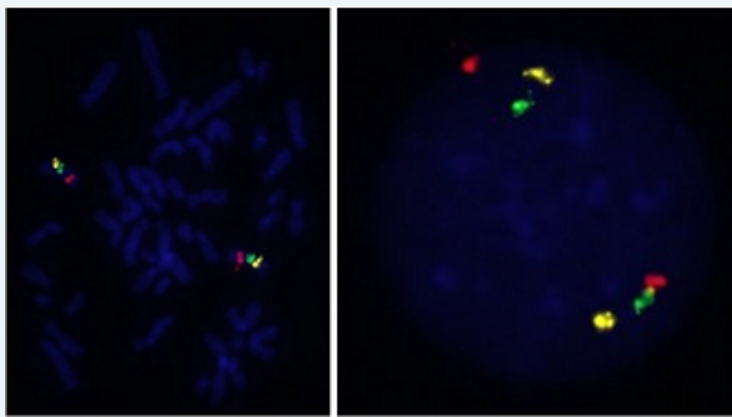
規格 : [ 200 uL ]

List All

### Specification

**Product Description:** Labeled FISH probes for identification of gene amplification using Fluorescent In Situ Hybridization Technique. ([Technology](#))

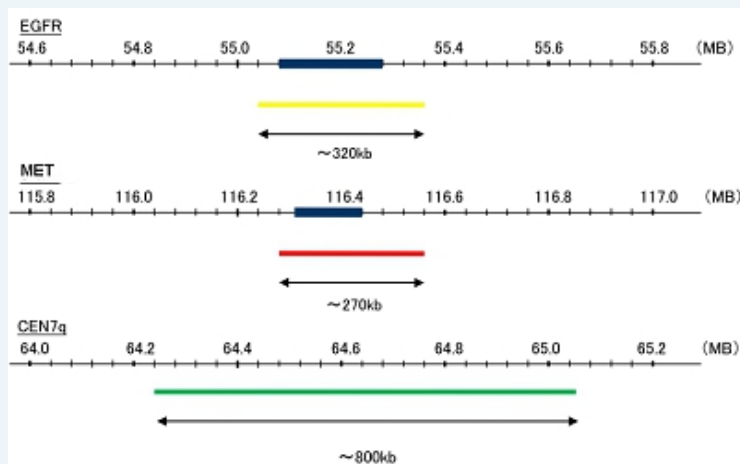
**Quality Control Testing:** Representative images of normal human cell (lymphocyte) stain with the triple color FISH probe. The left image is chromosomes at metaphase, and the right image is an interphase nucleus.



**Supplied Product:** DAPI Counterstain (1500 ng/mL ) 250 uL

**Storage Instruction:** Store at 4°C in the dark.

**Note:** Hybridization position of the probes on the chromosome.



**Probe 2:** MET(c-met)  
**Size:** Approximately 270kb  
**Fluorophore:** TexRed  
**Location:** 7q31

**Probe 1:** EGFR  
**Size:** Approximately 320kb  
**Fluorophore:** R6G  
**Location:** 7q12

### Application Image

Fluorescent In Situ Hybridization (Cell)

**Probe 3:** CEN7q  
**Size:** Approximately 800kb  
**Fluorophore:** FITC  
**Location:** 7q11.21

**Origin:** Human

**Source:** Genomic DNA

**Notice:** We **strongly recommend** the customer to use FFPE FISH PreTreatment Kit 1 (Catalog #: [KA2375](#) or [KA2691](#)) for the pretreatment of Formalin-Fixed Paraffin-Embedded (FFPE) tissue sections.

**Regulation Status:** For research use only (RUO)

## Applications

### Fluorescent In Situ Hybridization (Cell)

 [Protocol Download](#)

[EGFR](#) [MET](#)

## Gene Information

**Entrez GeneID:** [1956](#)

**Gene Name:** EGFR

**Gene Alias:** ERBB,ERBB1,HER1,PIG61,mENA

**Gene Description:** epidermal growth factor receptor (erythroblastic leukemia viral (v-erb-b) oncogene homolog, avian)

**Omim ID:** [131550](#), [211980](#)

**Gene Ontology:** [Hyperlink](#)

**Gene Summary:** The protein encoded by this gene is a transmembrane glycoprotein that is a member of the protein kinase superfamily. This protein is a receptor for members of the epidermal growth factor family. EGFR is a cell surface protein that binds to epidermal growth factor. Binding of the protein to a ligand induces receptor dimerization and tyrosine autophosphorylation and leads to cell proliferation. Mutations in this gene are associated with lung cancer. [provided by RefSeq]

**Other Designations:** avian erythroblastic leukemia viral (v-erb-b) oncogene homolog, cell growth inhibiting protein 40, cell proliferation-inducing protein 61, epidermal growth factor receptor

## Gene Information

**Entrez GeneID:** [4233](#)

**Gene Name:** MET

**Gene Alias:** AUTS9,HGFR,RCCP2,c-Met

**Gene Description:** met proto-oncogene (hepatocyte growth factor receptor)

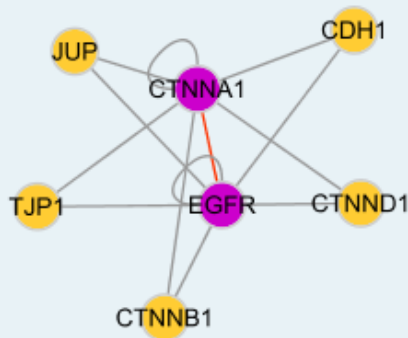
**Omim ID:** [114550](#), [164860](#), [605074](#), [611015](#)

**Gene Ontology:** [Hyperlink](#)

**Gene Summary:** The proto-oncogene MET product is the hepatocyte growth factor receptor and encodes tyrosine-kinase activity. The primary single chain precursor protein is post-translationally cleaved to produce the alpha and beta subunits, which are disulfide linked to form the mature receptor. Various mutations in the MET gene are associated with papillary renal carcinoma. Two transcript variants encoding different isoforms have been found for this gene. [provided by RefSeq]

**Other Designations:** HGF receptor, OTTHUMP00000069168, SF receptor, met proto-oncogene, met proto-oncogene tyrosine kinase, oncogene MET, scatter factor receptor

### Interactome 1



### Interactome 2

