



# SZABO SCANDIC

Part of Europa Biosite

## Produktinformation



Forschungsprodukte & Biochemikalien



Zellkultur & Verbrauchsmaterial



Diagnostik & molekulare Diagnostik



Laborgeräte & Service

Weitere Information auf den folgenden Seiten!  
See the following pages for more information!



### Lieferung & Zahlungsart

siehe unsere [Liefer- und Versandbedingungen](#)

### Zuschläge

- Mindermengenzuschlag
- Trockeneiszuschlag
- Gefahrgutzuschlag
- Expressversand

### SZABO-SCANDIC HandelsgmbH

Quellenstraße 110, A-1100 Wien

T. +43(0)1 489 3961-0

F. +43(0)1 489 3961-7

[mail@szabo-scandic.com](mailto:mail@szabo-scandic.com)

[www.szabo-scandic.com](http://www.szabo-scandic.com)

[linkedin.com/company/szaboscandic](https://www.linkedin.com/company/szaboscandic) 

## KIF5B Split FISH Probe

Catalog # : FS0018

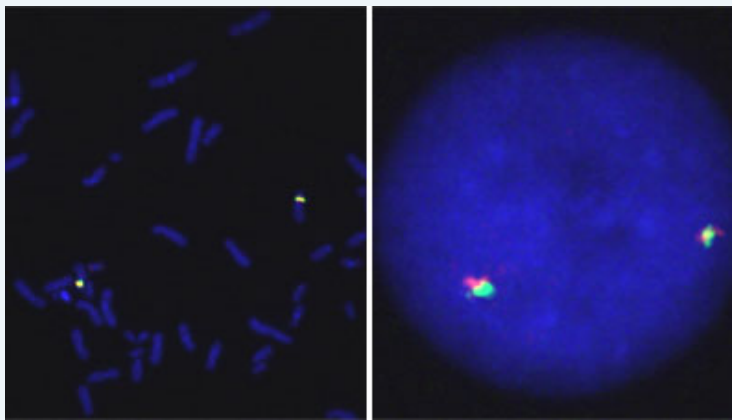
規格 : [ 200 uL ]

[List All](#)

### Specification

**Product Description:** Labeled FISH probes for identification of gene split using Fluorescent In Situ Hybridization Technique. ([Technology](#))

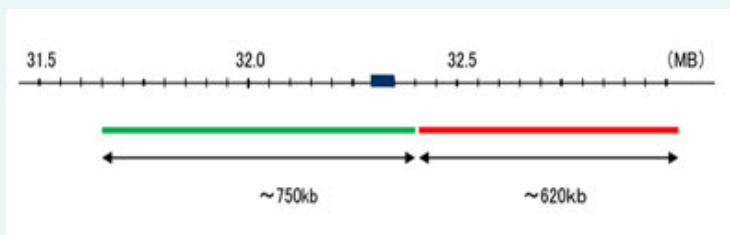
**Quality Control Testing:** Representative images of normal human cell (lymphocyte) stain with the dual color FISH probe. The left image is chromosomes at metaphase, and the right image is an interphase nucleus.



**Supplied Product:** DAPI Counterstain (1500 ng/mL ) 250 uL

**Storage Instruction:** Store at 4°C in the dark.

**Note:** Hybridization position of the probes on the chromosome:



**Probe 1:** KIF5B(Texas Red)  
**Size:** Approximately 620kb  
**Fluorophore:** Texas Red  
**Location:** 10p11.2

**Probe 2:** KIF5B(FITC)  
**Size:** Approximately 750kb  
**Fluorophore:** FITC  
**Location:** 10p11.2

**Origin:** Human

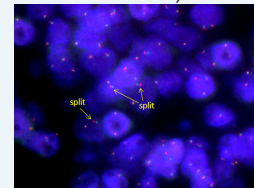
**Source:** Genomic DNA

**Notice:** We **strongly recommend** the customer to use FFPE FISH PreTreatment Kit 1 (Catalog #: [KA2375](#) or [KA2691](#)) for the pretreatment

### Application Image

Fluorescent In Situ Hybridization (Cell)

Fluorescent In Situ Hybridization (Formalin/PFA-fixed paraffin-embedded sections)



[enlarge](#)

of Formalin-Fixed Paraffin-Embedded (FFPE) tissue sections.

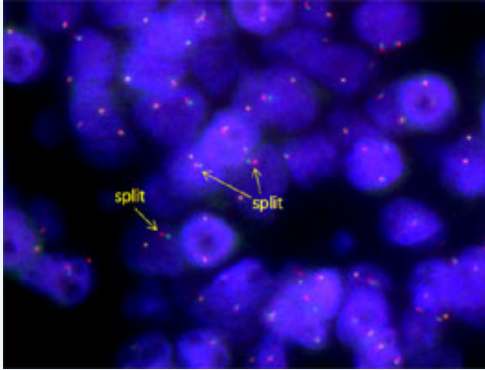
**Regulation Status:** For research use only (RUO)

## Applications

### Fluorescent In Situ Hybridization (Cell)

 [Protocol Download](#)

### Fluorescent In Situ Hybridization (Formalin/PFA-fixed paraffin-embedded sections)



 [enlarge this image](#)

Human lung, adenocarcinoma (FFPE) stained with KIF5B Split Probe.  
Human lung, adenocarcinoma showed KIF5B gene split.

 [Protocol Download](#)

## Gene Information

**Entrez GeneID:** [3799](#)

**Gene Name:** KIF5B

**Gene Alias:** KINH,KNS,KNS1,UKHC

**Gene Description:** kinesin family member 5B

**Omim ID:** [602809](#)

**Gene Ontology:** [Hyperlink](#)

**Other Designations:** kinesin 1 (110-120kD),kinesin heavy chain

## Related Disease

[Alzheimer Disease](#) [Genetic Predisposition to Disease](#)

[服務條款](#) | [隱私權政策](#) | [著作及商標](#) | [網站地圖](#)

©2017 亞諾法生技股份有限公司 Abnova Corporation. 版權所有.