



SZABO SCANDIC

Part of Europa Biosite

Produktinformation



Forschungsprodukte & Biochemikalien



Zellkultur & Verbrauchsmaterial



Diagnostik & molekulare Diagnostik



Laborgeräte & Service

Weitere Information auf den folgenden Seiten!
See the following pages for more information!



Lieferung & Zahlungsart

siehe unsere [Liefer- und Versandbedingungen](#)

Zuschläge

- Mindermengenzuschlag
- Trockeneiszuschlag
- Gefahrgutzuschlag
- Expressversand

SZABO-SCANDIC HandelsgmbH

Quellenstraße 110, A-1100 Wien

T. +43(0)1 489 3961-0

F. +43(0)1 489 3961-7

mail@szabo-scandic.com

www.szabo-scandic.com

[linkedin.com/company/szaboscandic](https://www.linkedin.com/company/szaboscandic) 

RET Split FISH Probe (V.2)

Catalog # : FS0019

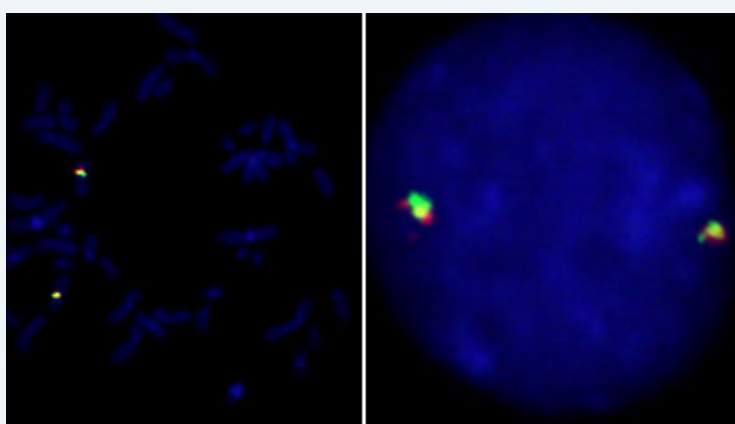
規格 : [200 uL]

[List All](#)

Specification

Product Description: Labeled FISH probes for identification of gene split using Fluorescent In Situ Hybridization Technique. ([Technology](#))

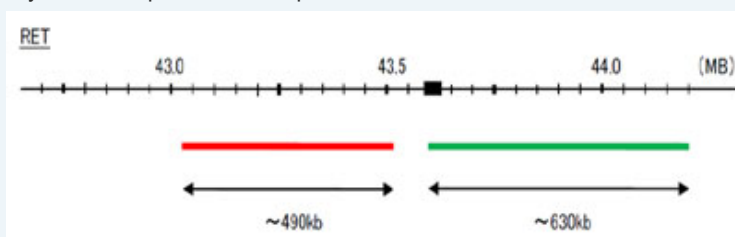
Quality Control Testing: Representative images of normal human cell (lymphocyte) stain with the dual color FISH probe. The left image is chromosomes at metaphase, and the right image is an interphase nucleus.



Supplied Product: DAPI Counterstain (1500 ng/mL) 250 uL

Storage Instruction: Store at 4°C in the dark.

Note: Hybridization position of the probes on the chromosome:



Probe 1: RET(Texas Red)
Size: Approximately 490kb
Fluorophore: Texas Red
Location: 10q11.2

Probe 2: RET(FITC)
Size: Approximately 630kb
Fluorophore: FITC
Location: 10q11.2

Origin: Human

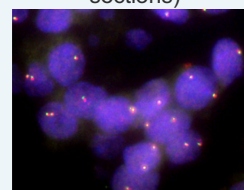
Source: Genomic DNA

Notice: We **strongly recommend** the customer to use FFPE FISH PreTreatment Kit 1 (Catalog #: [KA2375](#) or [KA2691](#)) for the pretreatment

Application Image

Fluorescent In Situ Hybridization (Cell)

Fluorescent In Situ Hybridization (Formalin/PFA-fixed paraffin-embedded sections)



[enlarge](#)

of Formalin-Fixed Paraffin-Embedded (FFPE) tissue sections.

Regulation For research use only (RUO)
Status:

Publication Reference

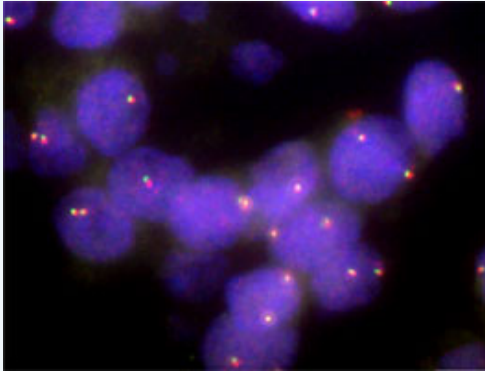
1. RET expression and detection of KIF5B/RET gene rearrangements in Japanese lung cancer
Sasaki H, Shimizu S, Tani Y, Maekawa M, Okuda K, Yokota K, Shitara M, Hikosaka Y, Moriyama S, Yano M, Fujii Y. *CANCER MEDICINE*. doi: 10.1002/cam4.13


Applications

Fluorescent In Situ Hybridization (Cell)

 [Protocol Download](#)

Fluorescent In Situ Hybridization (Formalin/PFA-fixed paraffin-embedded sections)



 [enlarge this image](#)

Human lung, adenosquamous cell carcinoma (FFPE) stained with RET Split FISH Probe. Human lung, adenosquamous cell carcinoma showed no RET gene split.

 [Protocol Download](#)

Gene Information

Entrez GeneID: [5979](#)

Gene Name: RET

Gene Alias: CDHF12,HSCR1,MEN2A,MEN2B,MTC1,PTC,RET-ELE1,RET51

Gene Description: ret proto-oncogene

Omim ID: [142623](#), [155240](#), [162300](#), [164761](#), [171300](#), [171400](#), [209880](#)

Gene Ontology: [Hyperlink](#)

Gene Summary: This gene, a member of the cadherin superfamily, encodes one of the receptor tyrosine kinases, which are cell-surface molecules that transduce signals for cell growth and differentiation. This gene plays a crucial role in neural crest development, and it can undergo oncogenic activation in vivo and in vitro by cytogenetic rearrangement. Mutations in this gene are associated with the disorders multiple endocrine neoplasia, type IIA, multiple endocrine neoplasia, type IIB, Hirschsprung disease, and medullary thyroid carcinoma. Two transcript variants encoding different isoforms have been found for this gene. Additional transcript variants have been described but their biological validity has not been confirmed. [provided by RefSeq]

Other Designations: RET transforming sequence, cadherin family member 12, hydroxyaryl-protein kinase, oncogene RET, receptor tyrosine kinase, ret proto-oncogene (multiple endocrine neoplasia and medullary thyroid carcinoma 1, Hirschsprung disease)

Gene Pathway

[Endocytosis Pathways in cancer](#) [Thyroid cancer](#)

Related Disease

[Adenocarcinoma](#) [Adenocarcinoma, Follicular](#) [Adenocarcinoma, Papillary](#) [Adenoma](#)
[Adrenal Gland Neoplasms](#) [Alzheimer Disease](#) [Atherosclerosis](#) [Atherosclerosis Carcinoma](#)
[Carcinoma, Medullary](#) [Carcinoma, Papillary](#) [Carcinoma, Papillary, Follicular](#) [Cleft Lip](#)
[Cleft Palate](#) [Digestive System Abnormalities](#) [Disease Progression](#) [Down Syndrome](#)
[Endocrine Gland Neoplasms](#) [Esophageal Neoplasms](#)

[... see more](#)

[服務條款](#) | [隱私權政策](#) | [著作及商標](#) | [網站地圖](#)

©2016 亞諾法生技股份有限公司 Abnova Corporation. 版權所有.