



SZABO SCANDIC

Part of Europa Biosite

Produktinformation



Forschungsprodukte & Biochemikalien



Zellkultur & Verbrauchsmaterial



Diagnostik & molekulare Diagnostik



Laborgeräte & Service

Weitere Information auf den folgenden Seiten!
See the following pages for more information!



Lieferung & Zahlungsart

siehe unsere [Liefer- und Versandbedingungen](#)

Zuschläge

- Mindermengenzuschlag
- Trockeneiszuschlag
- Gefahrgutzuschlag
- Expressversand

SZABO-SCANDIC HandelsgmbH

Quellenstraße 110, A-1100 Wien

T. +43(0)1 489 3961-0

F. +43(0)1 489 3961-7

mail@szabo-scandic.com

www.szabo-scandic.com

[linkedin.com/company/szaboscandic](https://www.linkedin.com/company/szaboscandic) 

KIF5B/RET SY Translocation FISH Probe

Catalog # : FT0006

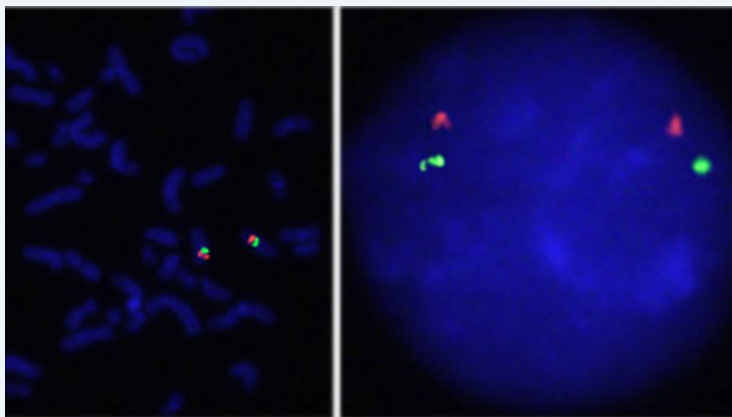
規格 : [200 uL]

[List All](#)

Specification

Product Description: Labeled FISH probes for identification of gene translocation using Fluorescent In Situ Hybridization Technique. ([Technology](#))

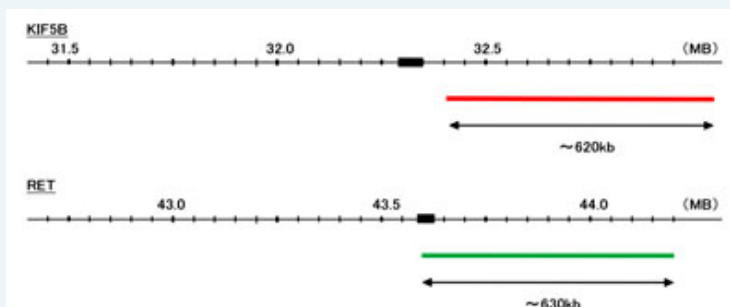
Quality Control Testing: Representative images of normal human cell (lymphocyte) stain with the dual color FISH probe. The left image is chromosomes at metaphase, and the right image is an interphase nucleus.



Supplied Product: DAPI Counterstain (1500 ng/mL) 250 uL

Storage Instruction: Store at 4°C in the dark.

Note: Hybridization position of the probes on the chromosome:



Probe 1: KIF5B
Size: Approximately 620kb
Fluorophore: Texas Red
Location: 10p11.2

Probe 2: RET
Size: Approximately 630kb
Fluorophore: FITC
Location: 10q11.2

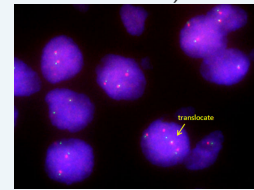
Probe Gap: The gap between two probes is approximately 10,500 kb.

Origin: Human

Application Image

Fluorescent In Situ Hybridization (Cell)

Fluorescent *In Situ* Hybridization (Formalin/PFA-fixed paraffin-embedded sections)



[enlarge](#)

Source: Genomic DNA

Notice: We **strongly recommend** the customer to use FFPE FISH PreTreatment Kit 1 (Catalog #: [KA2375](#) or [KA2691](#)) for the pretreatment of Formalin-Fixed Paraffin-Embedded (FFPE) tissue sections.

Regulation Status: For research use only (RUO)

Datasheet:  [Download](#)

Publication Reference

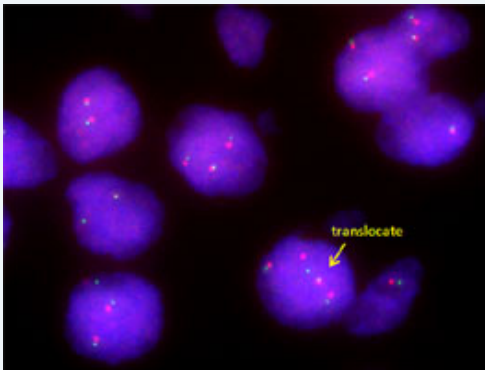
1. [Detection of RET \(rearranged during transfection\) variants and their downstream signal molecules in RET rearranged lung adenocarcinoma patients.](#)
Kim JO, Shin JY, Kim MY, Son KH, Jung CK, Kim TJ, Kim SY, Park JK, Sung SW, Bae SJ, Min HJ, Kang JH. *Surg Oncol.* 2018 Mar;27(1):106-113. doi: 10.1016/j.suronc.2018.01.006. Epub 2018 Feb 8.
2. [KIF5B-RET Fusion gene may coincide oncogenic mutations of EGFR or KRAS gene in lung adenocarcinomas.](#)
Kim JO, Lee J, Shin JY, Oh JE, Jung CK, Park JK, Sung SW, Bae SJ, Min HJ, Kim D, Park JY, Kang JH. *Diagn Pathol.* 2015 Aug 14;10:143.
3. [RET expression and detection of KIF5B/RET gene rearrangements in Japanese lung cancer](#)
Sasaki H, Shimizu S, Tani Y, Maekawa M, Okuda K, Yokota K, Shitara M, Hikosaka Y, Moriyama S, Yano M, Fujii Y. *CANCER MEDICINE.* doi: 10.1002/cam4.13


Applications

Fluorescent In Situ Hybridization (Cell)

 [Protocol Download](#)

Fluorescent In Situ Hybridization (Formalin/PFA-fixed paraffin-embedded sections)



 [enlarge this image](#)

Human lung, adenosquamous cell carcinoma (FFPE) stained with KIF5B/RET SY Translocation FISH Probe . Human lung, adenosquamous cell carcinoma showed KIF5B/RET SY Translocation.

 [Protocol Download](#)

[KIF5B](#) [RET](#)

Gene Information

Entrez GeneID: [3799](#)

Gene Name: KIF5B

Gene Alias: KINH,KNS,KNS1,UKHC

Gene Description: kinesin family member 5B

Omim ID: [602809](#)

Gene Ontology: [Hyperlink](#)

Other kinesin 1 (110-120kD),kinesin heavy chain

Designations:

Gene Information

Entrez GeneID: [5979](#)

Gene Name: RET

Gene Alias: CDHF12,HSCR1,MEN2A,MEN2B,MTC1,PTC,RET-ELE1,RET51

Gene Description: ret proto-oncogene

Omim ID: [142623](#), [155240](#), [162300](#), [164761](#), [171300](#), [171400](#), [209880](#)

Gene Ontology: [Hyperlink](#)

Gene Summary: This gene, a member of the cadherin superfamily, encodes one of the receptor tyrosine kinases, which are cell-surface molecules that transduce signals for cell growth and differentiation. This gene plays a crucial role in neural crest development, and it can undergo oncogenic activation in vivo and in vitro by cytogenetic rearrangement. Mutations in this gene are associated with the disorders multiple endocrine neoplasia, type IIA, multiple endocrine neoplasia, type IIB, Hirschsprung disease, and medullary thyroid carcinoma. Two transcript variants encoding different isoforms have been found for this gene. Additional transcript variants have been described but their biological validity has not been confirmed. [provided by RefSeq]

Other Designations: RET transforming sequence,cadherin family member 12,hydroxyaryl-protein kinase,oncogene RET,receptor tyrosine kinase,ret proto-oncogene (multiple endocrine neoplasia and medullary thyroid carcinoma 1, Hirschsprung disease)

[服務條款](#) | [隱私權政策](#) | [著作及商標](#) | [網站地圖](#)

©2019 亞諾法生技股份有限公司 Abnova Corporation. 版權所有.