



# SZABO SCANDIC

Part of Europa Biosite

## Produktinformation



Forschungsprodukte & Biochemikalien



Zellkultur & Verbrauchsmaterial



Diagnostik & molekulare Diagnostik



Laborgeräte & Service

Weitere Information auf den folgenden Seiten!  
See the following pages for more information!



### Lieferung & Zahlungsart

siehe unsere [Liefer- und Versandbedingungen](#)

### Zuschläge

- Mindermengenzuschlag
- Trockeneiszuschlag
- Gefahrgutzuschlag
- Expressversand

### SZABO-SCANDIC HandelsgmbH

Quellenstraße 110, A-1100 Wien

T. +43(0)1 489 3961-0

F. +43(0)1 489 3961-7

[mail@szabo-scandic.com](mailto:mail@szabo-scandic.com)

[www.szabo-scandic.com](http://www.szabo-scandic.com)

[linkedin.com/company/szaboscandic](https://www.linkedin.com/company/szaboscandic) 

## CLEC7A (Human) Recombinant Protein (P01)

Catalog # : H00064581-P01

規格 : [ 10 ug ] [ 25 ug ]

[List All](#)

### Specification

**Product Description:** Human CLEC7A full-length ORF ( AAH13385, 1 a.a. - 77 a.a.) recombinant protein with GST-tag at N-terminal.

**Sequence:** MEYHPDLENLDEDGYQLHFDSQSNTRIAVVSEKGSAAASPPWRLIAVIL  
GILCLVILVIAVVLGTMAGFKAVEFKG

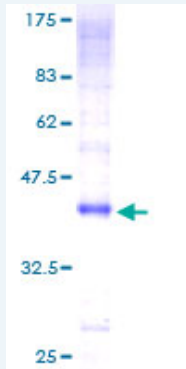
**Host:** Wheat Germ (in vitro)

**Theoretical MW (kDa):** 34.21

**Preparation Method:** *in vitro* wheat germ expression system

**Purification:** Glutathione Sepharose 4 Fast Flow

**Quality Control Testing:** 12.5% SDS-PAGE Stained with Coomassie Blue.



**Storage Buffer:** 50 mM Tris-HCl, 10 mM reduced Glutathione, pH=8.0 in the elution buffer.

**Storage Instruction:** Store at -80°C. Aliquot to avoid repeated freezing and thawing.

**Note:** Best use within three months from the date of receipt of this protein.

**MSDS:** [Download](#)

**Datasheet:** [Download](#)

### Applications

Enzyme-linked Immunoabsorbent Assay

Western Blot (Recombinant protein)

Antibody Production

Protein Array

### Application Image

Enzyme-linked Immunoabsorbent Assay

Western Blot (Recombinant protein)

Antibody Production

Protein Array

## Gene Information

Entrez GeneID: [64581](#)

GeneBank  
Accession#: [BC013385](#)

Protein  
Accession#: [AAH13385](#)

Gene Name: CLEC7A

Gene Alias: BGR,CLECSF12,DECTIN1

Gene  
Description: C-type lectin domain family 7, member A

Omim ID: [606264](#)

Gene Ontology: [Hyperlink](#)

**Gene Summary:** This gene encodes a member of the C-type lectin/C-type lectin-like domain (CTL/CTLD) superfamily. The encoded glycoprotein is a small type II membrane receptor with an extracellular C-type lectin-like domain fold and a cytoplasmic domain with an immunoreceptor tyrosine-based activation motif. It functions as a pattern-recognition receptor that recognizes a variety of beta-1,3-linked and beta-1,6-linked glucans from fungi and plants, and in this way plays a role in innate immune response. Alternate transcriptional splice variants, encoding different isoforms, have been characterized. This gene is closely linked to other CTL/CTLD superfamily members on chromosome 12p13 in the natural killer gene complex region. [provided by RefSeq]

**Other Designations:** C-type (calcium dependent, carbohydrate-recognition domain) lectin, superfamily member 12,beta-glucan receptor,dectin-1,dendritic cell-associated C-type lectin 1,dendritic cell-associated C-type lectin-1,lectin-like receptor 1

## Related Disease

[Aspergillosis](#) [Candidiasis](#) [Candidiasis, Oral Disease Susceptibility](#)  
[Genetic Predisposition to Disease](#) [Graft vs Host Disease](#) [HIV Infections](#) [Inflammation](#)  
[Inflammatory Bowel Diseases](#) [Opportunistic Infections](#)

[服務條款](#) | [隱私權政策](#) | [著作及商標](#) | [網站地圖](#)

©2020 亞諾法生技股份有限公司 Abnova Corporation. 版權所有.