



# SZABO SCANDIC

Part of Europa Biosite

## Produktinformation



Forschungsprodukte & Biochemikalien



Zellkultur & Verbrauchsmaterial



Diagnostik & molekulare Diagnostik



Laborgeräte & Service

Weitere Information auf den folgenden Seiten!  
See the following pages for more information!



### Lieferung & Zahlungsart

siehe unsere [Liefer- und Versandbedingungen](#)

### Zuschläge

- Mindermengenzuschlag
- Trockeneiszuschlag
- Gefahrgutzuschlag
- Expressversand

### SZABO-SCANDIC HandelsgmbH

Quellenstraße 110, A-1100 Wien

T. +43(0)1 489 3961-0

F. +43(0)1 489 3961-7

[mail@szabo-scandic.com](mailto:mail@szabo-scandic.com)

[www.szabo-scandic.com](http://www.szabo-scandic.com)

[linkedin.com/company/szaboscandic](https://www.linkedin.com/company/szaboscandic) 

## LMAN2L (Human) Recombinant Protein (P01)

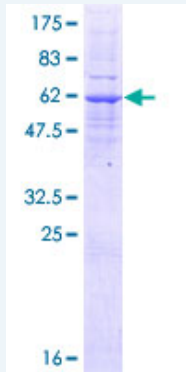
Catalog # : H00081562-P01

規格 : [ 10 ug ] [ 25 ug ]

[List All](#)

### Specification

<b>Product Description:</b>	Human LMAN2L full-length ORF ( NP_110432.1, 1 a.a. - 348 a.a.) recombinant protein with GST-tag at N-terminal.
<b>Sequence:</b>	MAATLGPLGSWQQWRRCLSARDGSRMLLLLLLLGSGQGPQQVGAGQ TFEYLKREHLSKPYQGVGTGSSSLWNLMGNAMVMTQYIRLTPDMQSK QGALWNRVPCFLRDWELQVHFKIHGQGKKNLHGDGLAIWYTKDRMQP GPVFGNMDKFVGLGVFVDTYPNEEKQQERVFPYISAMVNNGSLSYDHE RDGRPTELGGCTAIVRNLHYDTFLVIRYVKRHLTIMMDIDGKHEWRDCIEV PGVRLPRGYFGTSSITGDLSDNHDVISLKL FELT VERTPEEEKLHRDVF LPSVDNMKLPENTAPLPPLSGLALFLIVFFSLVFSVFAIVIGIILYNKWQEQ SRKRFY
<b>Host:</b>	Wheat Germ (in vitro)
<b>Theoretical MW (kDa):</b>	66.1
<b>Preparation Method:</b>	<i>in vitro</i> wheat germ expression system
<b>Purification:</b>	Glutathione Sepharose 4 Fast Flow
<b>Quality Control Testing:</b>	12.5% SDS-PAGE Stained with Coomassie Blue.



**Storage Buffer:** 50 mM Tris-HCl, 10 mM reduced Glutathione, pH=8.0 in the elution buffer.

**Storage Instruction:** Store at -80°C. Aliquot to avoid repeated freezing and thawing.

**Note:** Best use within three months from the date of receipt of this protein.

**MSDS:** [Download](#)

**Datasheet:** [Download](#)

### Applications

Enzyme-linked Immunoabsorbent Assay

### Application Image

Enzyme-linked Immunoabsorbent Assay  
Western Blot (Recombinant protein)  
Antibody Production  
Protein Array

## Western Blot (Recombinant protein)

Antibody Production

Protein Array

### Gene Information

Entrez GeneID: [81562](#)

GeneBank Accession#: [NM\\_030805.1](#)

Protein Accession#: [NP\\_110432.1](#)

Gene Name: LMAN2L

Gene Alias: DKFZp564L2423,MGC11139,VIPL

Gene Description: lectin, mannose-binding 2-like

Omim ID: [609552](#)

Gene Ontology: [Hyperlink](#)

Other Designations: VIP36-like

[服務條款](#) | [隱私權政策](#) | [著作及商標](#) | [網站地圖](#)

©2020 亞諾法生技股份有限公司 Abnova Corporation. 版權所有.