



SZABO SCANDIC

Part of Europa Biosite

Produktinformation



Forschungsprodukte & Biochemikalien



Zellkultur & Verbrauchsmaterial



Diagnostik & molekulare Diagnostik



Laborgeräte & Service

Weitere Information auf den folgenden Seiten!
See the following pages for more information!



Lieferung & Zahlungsart

siehe unsere [Liefer- und Versandbedingungen](#)

Zuschläge

- Mindermengenzuschlag
- Trockeneiszuschlag
- Gefahrgutzuschlag
- Expressversand

SZABO-SCANDIC HandelsgmbH

Quellenstraße 110, A-1100 Wien

T. +43(0)1 489 3961-0

F. +43(0)1 489 3961-7

mail@szabo-scandic.com

www.szabo-scandic.com

[linkedin.com/company/szaboscandic](https://www.linkedin.com/company/szaboscandic) 

SIGLEC10 (Human) Recombinant Protein (Q01)

Catalog # : H00089790-Q01

規格 : [10 ug] [25 ug]

List All

Specification

Product Description: Human SIGLEC10 partial ORF (NP_149121, 589 a.a. - 696 a.a.) recombinant protein with GST-tag at N-terminal.

Sequence: SRHSTILDYINVVPTAGPLAQKRQKATPNSPRTLPPGAPSPESKKNQK
KQYQLPSFPEPKSSTQAPESQESQEELHYATLNFPQVRRPEARMPKG
TQADYAEVKF

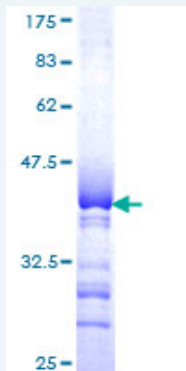
Host: Wheat Germ (in vitro)

Theoretical MW (kDa): 37.62

Preparation Method: *in vitro* wheat germ expression system

Purification: Glutathione Sepharose 4 Fast Flow

Quality Control Testing: 12.5% SDS-PAGE Stained with Coomassie Blue.



Storage Buffer: 50 mM Tris-HCl, 10 mM reduced Glutathione, pH=8.0 in the elution buffer.

Storage Instruction: Store at -80°C. Aliquot to avoid repeated freezing and thawing.

Note: Best use within three months from the date of receipt of this protein.

MSDS: [Download](#)

Datasheet: [Download](#)

Applications

Enzyme-linked Immunoabsorbent Assay

Western Blot (Recombinant protein)

Antibody Production

Application Image

Enzyme-linked Immunoabsorbent Assay

Western Blot (Recombinant protein)

Antibody Production

Protein Array

Protein Array

Gene Information

Entrez GeneID: [89790](#)

GeneBank Accession#: [NM_033130](#)

Protein Accession#: [NP_149121](#)

Gene Name: SIGLEC10

Gene Alias: MGC126774,PRO940,SIGLEC-10,SLG2

Gene Description: sialic acid binding Ig-like lectin 10

Omim ID: [606091](#)

Gene Ontology: [Hyperlink](#)

Gene Summary: SIGLECs are members of the immunoglobulin superfamily that are expressed on the cell surface. Most SIGLECs have 1 or more cytoplasmic immune receptor tyrosine-based inhibitory motifs, or ITIMs. SIGLECs are typically expressed on cells of the innate immune system, with the exception of the B-cell expressed SIGLEC6 (MIM 604405). [supplied by OMIM]

Other Designations: sialic acid binding Ig-like lectin 10 Ig-like lectin 7,siglec-like gene 2