



SZABO SCANDIC

Part of Europa Biosite

Produktinformation



Forschungsprodukte & Biochemikalien



Zellkultur & Verbrauchsmaterial



Diagnostik & molekulare Diagnostik



Laborgeräte & Service

Weitere Information auf den folgenden Seiten!
See the following pages for more information!



Lieferung & Zahlungsart

siehe unsere [Liefer- und Versandbedingungen](#)

Zuschläge

- Mindermengenzuschlag
- Trockeneiszuschlag
- Gefahrgutzuschlag
- Expressversand

SZABO-SCANDIC HandelsgmbH

Quellenstraße 110, A-1100 Wien

T. +43(0)1 489 3961-0

F. +43(0)1 489 3961-7

mail@szabo-scandic.com

www.szabo-scandic.com

[linkedin.com/company/szaboscandic](https://www.linkedin.com/company/szaboscandic) 

CLEC12A (Human) Recombinant Protein (Q01)

Catalog # : H00160364-Q01

規格 : [10 ug] [25 ug]

[List All](#)

Specification

Product Description: Human CLEC12A partial ORF (ADR82900.1, 108 a.a. - 221 a.a.) recombinant protein with GST tag at N-terminal.

Sequence: TTLQTIATKLCRELYSKEQEHKCKPCPRRWIWHKDCYFLSDDVQTWQ
ESKMACAAQNASLLKINNKNALEFIKSQRSYDYWLGLSPEEDSTRGMR
VDNIINSSAWVIRNAPD

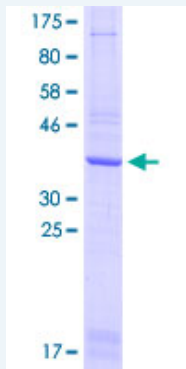
Host: Wheat Germ (in vitro)

Theoretical MW (kDa): 38.17

Preparation Method: *in vitro* wheat germ expression system

Purification: Glutathione Sepharose 4 Fast Flow

Quality Control Testing: 12.5% SDS-PAGE Stained with Coomassie Blue



Storage Buffer: 50 mM Tris-HCl, 10 mM reduced Glutathione, pH=8.0 in the elution buffer.

Storage Instruction: Store at -80°C. Aliquot to avoid repeated freezing and thawing.

Note: Best use within three months from the date of receipt of this protein.

MSDS: [Download](#)

Datasheet: [Download](#)

Applications

Enzyme-linked Immunoabsorbent Assay

Western Blot (Recombinant protein)

Antibody Production

Application Image

Enzyme-linked Immunoabsorbent Assay

Western Blot (Recombinant protein)

Antibody Production

Protein Array

Protein Array

Gene Information

Entrez GeneID: [160364](#)

**GeneBank
Accession#:** [HQ258146.1](#)

**Protein
Accession#:** [ADR82900.1](#)

Gene Name: CLEC12A

Gene Alias: CLL-1,CLL1,DCAL-2,MGC70602,MICL

**Gene
Description:** C-type lectin domain family 12, member A

Gene Ontology: [Hyperlink](#)

Gene Summary: This gene encodes a member of the C-type lectin/C-type lectin-like domain (CTL/CTLD) superfamily. Members of this family share a common protein fold and have diverse functions, such as cell adhesion, cell-cell signalling, glycoprotein turnover, and roles in inflammation and immune response. The protein encoded by this gene is a negative regulator of granulocyte and monocyte function. Several alternatively spliced transcript variants of this gene have been described, but the full-length nature of some of these variants has not been determined. This gene is closely linked to other CTL/CTLD superfamily members in the natural killer gene complex region on chromosome 12p13. [provided by RefSeq]

**Other
Designations:** C-type lectin protein CLL-1,C-type lectin superfamily,C-type lectin-like molecule-1,dendritic cell associated lectin 2,myeloid inhibitory C-type lectin-like receptor

[服務條款](#) | [隱私權政策](#) | [著作及商標](#) | [網站地圖](#)

©2020 亞諾法生技股份有限公司 Abnova Corporation. 版權所有.