



# SZABO SCANDIC

Part of Europa Biosite

## Produktinformation



Forschungsprodukte & Biochemikalien



Zellkultur & Verbrauchsmaterial



Diagnostik & molekulare Diagnostik



Laborgeräte & Service

Weitere Information auf den folgenden Seiten!  
See the following pages for more information!



### Lieferung & Zahlungsart

siehe unsere [Liefer- und Versandbedingungen](#)

### Zuschläge

- Mindermengenzuschlag
- Trockeneiszuschlag
- Gefahrgutzuschlag
- Expressversand

### SZABO-SCANDIC HandelsgmbH

Quellenstraße 110, A-1100 Wien

T. +43(0)1 489 3961-0

F. +43(0)1 489 3961-7

[mail@szabo-scandic.com](mailto:mail@szabo-scandic.com)

[www.szabo-scandic.com](http://www.szabo-scandic.com)

[linkedin.com/company/szaboscandic](https://www.linkedin.com/company/szaboscandic) 

## CLEC14A (Human) Recombinant Protein (P01)

Catalog # : H00161198-P01

規格 : [ 10 ug ] [ 25 ug ]

[List All](#)

### Specification

**Product Description:** Human CLEC14A full-length ORF ( NP\_778230.1, 1 a.a. - 490 a.a.) recombinant protein with GST-tag at N-terminal.

**Sequence:** MRPAFALCLLWQALWPGPGGGEHPTADRAGCSASGACYSLHHATMKR  
 QAAEEACILRGGALSTVRAGAELRAVLALLRAGPGPGGGKDLLFWVAL  
 ERRRSHCTLENEPLRGFSWLSSDPGGLESDTLQWVEEPQRSCARRC  
 AVLQATGGVEPAGWKEMRCHLRANGYLCKYQFEVLCAPRPGAASNLS  
 YRAPFQLHSAALDFSPPGTEVSALCRGQLPISVTCIADEIGARWDKLSGD  
 VLCPCPGRYLRAGKCAELPNCLDDLGGFACECATGFELGKDGRSCVTS  
 GEGQPTLGGTGVPTRRPPATATSPVPQRTWPIRVDEKLGETPLVPEQD  
 NSVTSIPEIPRWGSQSTMSTLQMSLQAESKATITPSGSVISKFNSTSSAT  
 PQAFDSSAVVFIQVSTAVVVLVILTMTVLGLVKLCFHESPSSQPRKESM  
 GPPGLESDPEPAALGSSSAHCTNNGVKVGDCLDRDRAEGALLAESPLG  
 SSDA

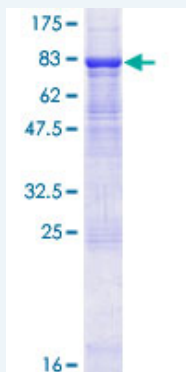
**Host:** Wheat Germ (in vitro)

**Theoretical MW (kDa):** 78

**Preparation Method:** *in vitro* wheat germ expression system

**Purification:** Glutathione Sepharose 4 Fast Flow

**Quality Control Testing:** 12.5% SDS-PAGE Stained with Coomassie Blue.



**Storage Buffer:** 50 mM Tris-HCl, 10 mM reduced Glutathione, pH=8.0 in the elution buffer.

**Storage Instruction:** Store at -80°C. Aliquot to avoid repeated freezing and thawing.

**Note:** Best use within three months from the date of receipt of this protein.

**MSDS:** [Download](#)

**Datasheet:** [Download](#)

### Application Image

Enzyme-linked Immunoabsorbent Assay

Western Blot (Recombinant protein)

Antibody Production

Protein Array

### Applications

Enzyme-linked Immunoabsorbent Assay

Western Blot (Recombinant protein)

Antibody Production

Protein Array

### Gene Information

Entrez GeneID: [161198](#)

GeneBank Accession#: [NM\\_175060.1](#)

Protein Accession#: [NP\\_778230.1](#)

Gene Name: CLEC14A

Gene Alias: C14orf27,CEG1

Gene Description: C-type lectin domain family 14, member A

Gene Ontology: [Hyperlink](#)

Other Designations: CIECT and EGF-like domain containing protein,OTTHUMP00000178873

[服務條款](#) | [隱私權政策](#) | [著作及商標](#) | [網站地圖](#)

©2020 亞諾法生技股份有限公司 Abnova Corporation. 版權所有.