



SZABO SCANDIC

Part of Europa Biosite

Produktinformation



Forschungsprodukte & Biochemikalien



Zellkultur & Verbrauchsmaterial



Diagnostik & molekulare Diagnostik



Laborgeräte & Service

Weitere Information auf den folgenden Seiten!
See the following pages for more information!



Lieferung & Zahlungsart

siehe unsere [Liefer- und Versandbedingungen](#)

Zuschläge

- Mindermengenzuschlag
- Trockeneiszuschlag
- Gefahrgutzuschlag
- Expressversand

SZABO-SCANDIC HandelsgmbH

Quellenstraße 110, A-1100 Wien

T. +43(0)1 489 3961-0

F. +43(0)1 489 3961-7

mail@szabo-scandic.com

www.szabo-scandic.com

[linkedin.com/company/szaboscandic](https://www.linkedin.com/company/szaboscandic) 

Product Number	O OCD00215
Product Page	http://www.avivasysbio.com/epinephrine-ova-conjugated-oocd00215.html
Product Name	Epinephrine (OVA - Conjugated) (O OCD00215)
Size	10ug
Gene Symbol	EPI
Alias Symbols	Epinephrine; L-Adrenaline; Adrenaline; L-epinephrine; Adrenalin; Levoepinephrine
Molecular Weight	183.2 Da
Product Format	Freeze-dried powder
Conjugation	OVA
Purity	> 90%
Official Gene Full Name	Epinephrine
Reconstitution and Storage	<p>Reconstitute in PBS (pH7.4) to a concentration of 0.1-1.0 mg/mL. Do not vortex.</p> <p>Avoid repeated freeze/thaw cycles. Store at 2-8C for one month. Aliquot and store at -80C for 12 months.</p> <p>The thermal stability is described by the loss rate. The loss rate was determined by accelerated thermal degradation test, that is, incubate the prote in at 37C for 48h, and no obvious degradation and precipitation were observed. The loss rate is less than 5% within the expiration date under appropriate storage condition.</p>
Additional Information	PubChem: EPI
Additional Information	Chemical Formula: C ₉ H ₁₃ NO ₃
Lead Time	Domestic: within 2 week delivery International: 3 week
Protein Name	Epinephrine
Species Reactivity	General
Application	

Image 1

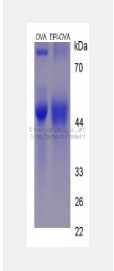
2D Structure



2D Structure

Image 2

SDS-PAGE



SDS-PAGE

AVIVA SYSTEMS BIOLOGY manufactures and sells quality antibody products covering genome wide proteins.

This product is for Research Use Only. Not for diagnostic, human, or veterinary use.
Optimal conditions of its use should be determined by end users.

AVIVA SYSTEMS BIOLOGY

5754 Pacific Center Blvd., Suite 201 San Diego, CA 92121 USA | Tel: (858)552-6979 | info@avivasysbio.com