



SZABO SCANDIC

Part of Europa Biosite

Produktinformation



Forschungsprodukte & Biochemikalien



Zellkultur & Verbrauchsmaterial



Diagnostik & molekulare Diagnostik



Laborgeräte & Service

Weitere Information auf den folgenden Seiten!
See the following pages for more information!



Lieferung & Zahlungsart

siehe unsere [Liefer- und Versandbedingungen](#)

Zuschläge

- Mindermengenzuschlag
- Trockeneiszuschlag
- Gefahrgutzuschlag
- Expressversand

SZABO-SCANDIC HandelsgmbH

Quellenstraße 110, A-1100 Wien

T. +43(0)1 489 3961-0

F. +43(0)1 489 3961-7

mail@szabo-scandic.com

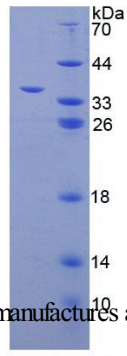
www.szabo-scandic.com

[linkedin.com/company/szaboscandic](https://www.linkedin.com/company/szaboscandic) 

Product Number	OPCD00713
Product Page	www.avivasysbio.com/lman1-recombinant-protein-opcd00713.html
Name	LMAN1 Recombinant Protein (OPCD00713)
Protein Size (# AA)	Pro198-Cys475 amino acids
Molecular Weight	36kDa
Tag	N-terminal His Tag
Conjugation	Unconjugated
NCBI Gene Id	3998
Host	E.coli
Purity	> 90%
Concentration	200 ug/mL (prior to lyoph)
Source	E.coli
Gene Full Name	lectin, mannose binding 1
Alias Symbols	endoplasmic reticulum-golgi intermediate compartment protein 53;ERGIC53;ERGIC-53;ER-Golgi intermediate compartment 53 kDa protein;F5F8D;FMFD1;gp58;intracellular mannose-specific lectin MR60;Lectin mannose-binding 1;MCFD1;MR60;protein ERGIC-53.
Product Format	Freeze-dried Powder. PBS, pH7.4, containing 0.01% SKL, 5% Trehalose.
Description of Target	Mannose-specific lectin. May recognize sugar residues of glycoproteins, glycolipids, or glycosylphosphatidyl inositol anchors and may be involved in the sorting or recycling of proteins, lipids, or both. The LMAN1-MCFD2 complex forms a specific cargo receptor for the ER-to-Golgi transport of selected proteins.
Reconstitution and Storage	2°C to 8°C -80°C
Datasheets/Manuals	Printable datasheet for LMAN1 Recombinant Protein (OPCD00713)
Additional Information	Endotoxin Level: < 1.0 EU per 1 ug (determined by the LAL method) Residues: Pro198-Cys475 Subcellular Location: Endoplasmic reticulum lumen Isoelectric Point: 5.3
Uniprot ID	P49257
Protein Name	Protein ERGIC-53
Protein Accession #	NP_005561.1
Nucleotide Accession #	NM_005570.3
Gene Symbol	LMAN1
Predicted Species Reactivity	Homo sapiens Human
Application	Ctrl (+), SDS-PAGE, WB

SDS-PAGE

Image 1



LMAN1 Recombinant Protein (OPCD00713) using SDS-PAGE

AVIVA SYSTEMS BIOLOGY manufactures and sells quality antibody products covering genome wide proteins.

This product is for Research Use Only. Not for diagnostic, human, or veterinary use.

Optimal conditions of its use should be determined by end users.

AVIVA SYSTEMS BIOLOGY

6370 Nancy Ridge Dr., Suite 104, San Diego, CA 92121 USA | Tel: (858)552-6979 | info@avivasysbio.com