



# SZABO SCANDIC

Part of Europa Biosite

## Produktinformation



Forschungsprodukte & Biochemikalien



Zellkultur & Verbrauchsmaterial



Diagnostik & molekulare Diagnostik



Laborgeräte & Service

Weitere Information auf den folgenden Seiten!  
See the following pages for more information!



### Lieferung & Zahlungsart

siehe unsere [Liefer- und Versandbedingungen](#)

### Zuschläge

- Mindermengenzuschlag
- Trockeneiszuschlag
- Gefahrgutzuschlag
- Expressversand

### SZABO-SCANDIC HandelsgmbH

Quellenstraße 110, A-1100 Wien

T. +43(0)1 489 3961-0

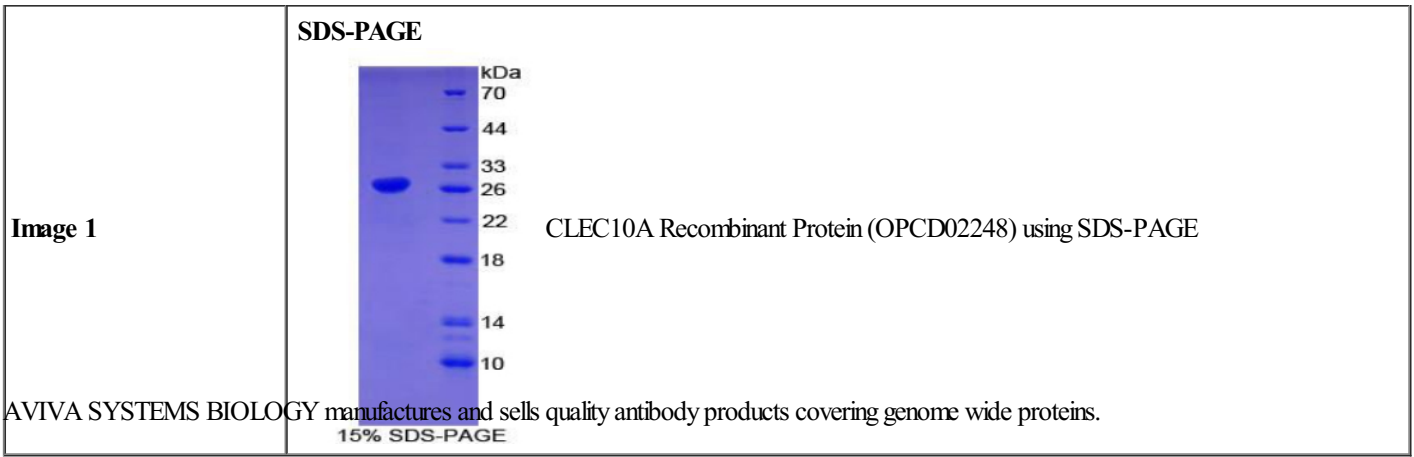
F. +43(0)1 489 3961-7

[mail@szabo-scandic.com](mailto:mail@szabo-scandic.com)

[www.szabo-scandic.com](http://www.szabo-scandic.com)

[linkedin.com/company/szaboscandic](https://www.linkedin.com/company/szaboscandic) 

Product Number	OPCD02248
Product Page	<a href="http://www.avivasysbio.com/clec10a-recombinant-protein-opcd02248.html">www.avivasysbio.com/clec10a-recombinant-protein-opcd02248.html</a>
Name	CLEC10A Recombinant Protein (OPCD02248)
Protein Size (# AA)	Arg69~Asp273 amino acids
Molecular Weight	27kDa
Tag	N-terminal His Tag
Conjugation	Unconjugated
NCBI Gene Id	17312
Host	E.coli
Purity	> 95%
Concentration	200 ug/mL (prior to lyoph)
Source	E.coli
Gene Full Name	C-type lectin domain family 10, member A
Alias Symbols	CD301;CD301a;C-type lectin domain family 10 member A;macrophage asialoglycoprotein-binding protein 1;macrophage galactose N-acetyl-galactosamine specific lectin 1;Macrophage galactose/N-acetylgalactosamine-specific lectin;M-ASGP-BP-1;Mgl;Mgl1;MMGL.
Product Format	Freeze-dried Powder. PBS, pH7.4, containing 0.01% SKL, 5% Trehalose.
Description of Target	Recognizes terminal galactose and N-acetylgalactosamine units. May participate in the interaction between tumoricidal macrophages and tumor cells. Plays a role in the recruitment of inflammatory monocytes to adipose tissue in diet-induced obesity.
Reconstitution and Storage	2°C to 8°C -80°C
Datasheets/Manuals	Printable datasheet for <a href="#">CLEC10A Recombinant Protein (OPCD02248)</a>
Additional Information	<b>Endotoxin Level:</b> < 1.0 EU per 1 ug (determined by the LAL method)
Additional Information	<b>Residues:</b> Arg69-Asp273
Additional Information	<b>Subcellular Location:</b> Membrane; Single-pass type II membrane prote
Uniprot ID	<a href="#">P49300</a>
Protein Name	C-type lectin domain family 10 member A
Protein Accession #	<a href="#">NP_034926.1</a>
Nucleotide Accession #	<a href="#">NM_010796.3</a>
Gene Symbol	<a href="#">Clec10a</a>
Predicted Species Reactivity	Mouse Mus musculus
Application	Ctrl (+), SDS-PAGE, WB



This product is for Research Use Only. Not for diagnostic, human, or veterinary use.  
Optimal conditions of its use should be determined by end users.

AVIVA SYSTEMS BIOLOGY  
6370 Nancy Ridge Dr., Suite 104, San Diego, CA 92121 USA | Tel: (858)552-6979 | [info@avivasysbio.com](mailto:info@avivasysbio.com)