



# SZABO SCANDIC

Part of Europa Biosite

## Produktinformation



Forschungsprodukte & Biochemikalien



Zellkultur & Verbrauchsmaterial



Diagnostik & molekulare Diagnostik



Laborgeräte & Service

Weitere Information auf den folgenden Seiten!  
See the following pages for more information!



### Lieferung & Zahlungsart

siehe unsere [Liefer- und Versandbedingungen](#)

### Zuschläge

- Mindermengenzuschlag
- Trockeneiszuschlag
- Gefahrgutzuschlag
- Expressversand

### SZABO-SCANDIC HandelsgmbH

Quellenstraße 110, A-1100 Wien

T. +43(0)1 489 3961-0

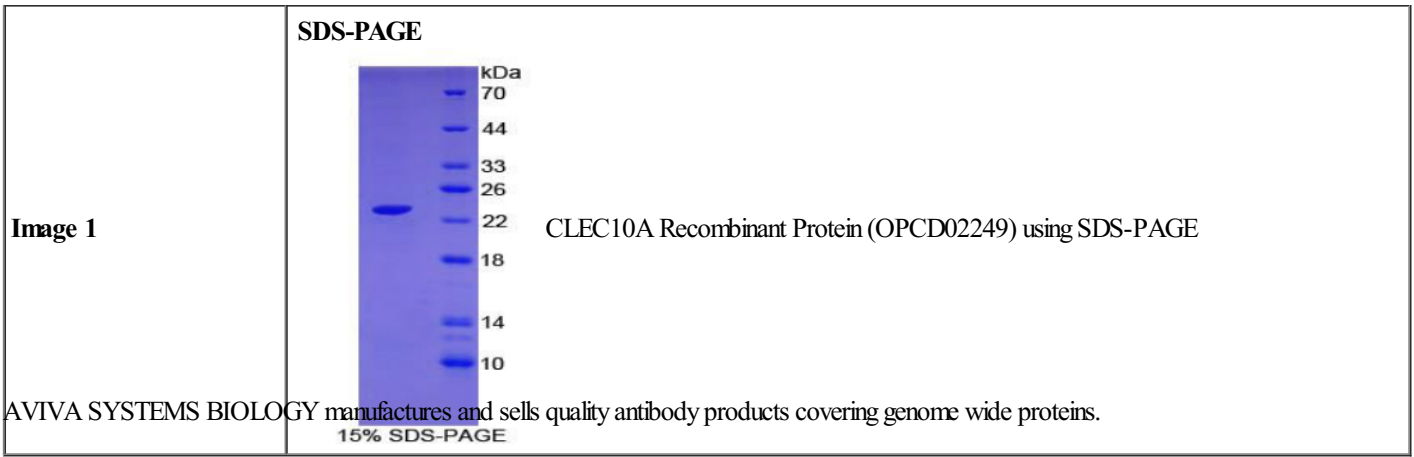
F. +43(0)1 489 3961-7

[mail@szabo-scandic.com](mailto:mail@szabo-scandic.com)

[www.szabo-scandic.com](http://www.szabo-scandic.com)

[linkedin.com/company/szaboscandic](https://www.linkedin.com/company/szaboscandic) 

Product Number	OPCD02249
Product Page	<a href="http://www.avivasysbio.com/clec10a-recombinant-protein-opcd02249.html">www.avivasysbio.com/clec10a-recombinant-protein-opcd02249.html</a>
Name	CLEC10A Recombinant Protein (OPCD02249)
Protein Size (# AA)	Thr71~Met239 amino acids
Molecular Weight	23kDa
Tag	N-terminal His Tag
Conjugation	Unconjugated
NCBI Gene Id	10462
Host	E.coli
Purity	> 95%
Concentration	200 ug/mL (prior to lyoph)
Source	E.coli
Gene Full Name	C-type lectin domain containing 10A
Alias Symbols	CD301;CLECSF13;CLECSF14;C-type (calcium dependent, carbohydrate-recognition domain) lectin, superfamily member 13 (macrophage-derived);C-type (calcium dependent, carbohydrate-recognition domain) lectin, superfamily member 14 (macrophage-derived);C-type lectin domain family 10 member A;C-type lectin superfamily member 14;HML;HML2;Macrophage lectin 2;macrophage lectin 2 (calcium dependent);MGL.
Product Format	Freeze-dried Powder. PBS, pH7.4, containing 0.01% SKL, 5% Trehalose.
Description of Target	Probable role in regulating adaptive and innate immune responses. Binds in a calcium-dependent manner to terminal galactose and N-acetylgalactosamine units, linked to serine or threonine. These sugar moieties are known as Tn-Ag and are expressed in a variety of carcinoma cells.
Reconstitution and Storage	2°C to 8°C -80°C
Datasheets/Manuals	Printable datasheet for <a href="#">CLEC10A Recombinant Protein (OPCD02249)</a>
Additional Information	<b>Endotoxin Level:</b> < 1.0 EU per 1 ug (determined by the LAL method)
Additional Information	<b>Residues:</b> Thr71-Met239
Additional Information	<b>Subcellular Location:</b> Membrane; Single-pass type II membrane prote
Uniprot ID	<a href="#">Q8IUN9</a>
Protein Name	C-type lectin domain family 10 member A
Protein Accession #	<a href="#">NP_006335.2</a>
Nucleotide Accession #	<a href="#">NM_006344.3</a>
Gene Symbol	<a href="#">CLEC10A</a>
Predicted Species Reactivity	Homo sapiens Human
Application	Ctrl (+), SDS-PAGE, WB



This product is for Research Use Only. Not for diagnostic, human, or veterinary use.  
Optimal conditions of its use should be determined by end users.

---

AVIVA SYSTEMS BIOLOGY  
6370 Nancy Ridge Dr., Suite 104, San Diego, CA 92121 USA | Tel: (858)552-6979 | [info@avivasysbio.com](mailto:info@avivasysbio.com)