



SZABO SCANDIC

Part of Europa Biosite

Produktinformation



Forschungsprodukte & Biochemikalien



Zellkultur & Verbrauchsmaterial



Diagnostik & molekulare Diagnostik



Laborgeräte & Service

Weitere Information auf den folgenden Seiten!
See the following pages for more information!



Lieferung & Zahlungsart

siehe unsere [Liefer- und Versandbedingungen](#)

Zuschläge

- Mindermengenzuschlag
- Trockeneiszuschlag
- Gefahrgutzuschlag
- Expressversand

SZABO-SCANDIC HandelsgmbH

Quellenstraße 110, A-1100 Wien

T. +43(0)1 489 3961-0

F. +43(0)1 489 3961-7

mail@szabo-scandic.com

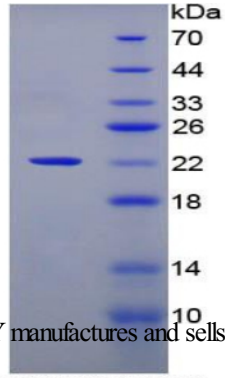
www.szabo-scandic.com

[linkedin.com/company/szaboscandic](https://www.linkedin.com/company/szaboscandic) 

Product Number	OPCD02258
Product Page	www.avivasysbio.com/clec4m-recombinant-protein-opcd02258.html
Name	CLEC4M Recombinant Protein (OPCD02258)
Protein Size (# AA)	Pro242~Glu399 amino acids
Molecular Weight	23kDa
Tag	N-terminal His Tag
Conjugation	Unconjugated
NCBI Gene Id	10332
Host	E.coli
Purity	> 95%
Concentration	200 ug/mL (prior to lyoph)
Source	E.coli
Gene Full Name	C-type lectin domain family 4 member M
Alias Symbols	CD209 antigen-like protein 1;CD209L;CD299;CD299 antigen;C-type lectin domain family 4 member M;DC-SIGN2;DCSIGNR;DC-SIGNR;DC-SIGN-related protein;dendritic cell-specific ICAM-3-grabbing non-integrin 2;HP10347;liver/lymph node-specific ICAM-3 grabbing non-integrin;Liver/lymph node-specific ICAM-3-grabbing non-integrin;LSIGN;L-SIGN;mannose binding C-type lectin DC-SIGNR.
Product Format	Freeze-dried Powder. PBS, pH7.4, containing 0.01% SKL, 5% Trehalose.
Description of Target	Probable pathogen-recognition receptor involved in peripheral immune surveillance in liver. May mediate the endocytosis of pathogens which are subsequently degraded in lysosomal compartments. Is a receptor for ICAM3, probably by binding to mannose-like carbohydrates.
Reconstitution and Storage	2°C to 8°C -80°C
Datasheets/Manuals	Printable datasheet for CLEC4M Recombinant Protein (OPCD02258)
Additional Information	Endotoxin Level: < 1.0 EU per 1 ug (determined by the LAL method)
Additional Information	Residues: Pro242-Glu399
Additional Information	Subcellular Location: Cell membrane; Single-pass type II membrane protein. Secret
Uniprot ID	Q9H2X3
Protein Name	C-type lectin domain family 4 member M
Protein Accession #	NP_001138377.1
Nucleotide Accession #	NM_001144905.1
Gene Symbol	CLEC4M
Predicted Species Reactivity	Homo sapiens Human
Application	Ctrl (+), SDS-PAGE, WB

Image 1

SDS-PAGE



CLEC4M Recombinant Protein (OPCD02258) using SDS-PAGE

AVIVA SYSTEMS BIOLOGY manufactures and sells quality antibody products covering genome wide proteins.

This product is for Research Use Only. Not for diagnostic, human, or veterinary use.

Optimal conditions of its use should be determined by end users.

AVIVA SYSTEMS BIOLOGY

6370 Nancy Ridge Dr., Suite 104, San Diego, CA 92121 USA | Tel: (858)552-6979 | info@avivasysbio.com