



# SZABO SCANDIC

Part of Europa Biosite

## Produktinformation



Forschungsprodukte & Biochemikalien



Zellkultur & Verbrauchsmaterial



Diagnostik & molekulare Diagnostik



Laborgeräte & Service

Weitere Information auf den folgenden Seiten!  
See the following pages for more information!



### Lieferung & Zahlungsart

siehe unsere [Liefer- und Versandbedingungen](#)

### Zuschläge

- Mindermengenzuschlag
- Trockeneiszuschlag
- Gefahrgutzuschlag
- Expressversand

### SZABO-SCANDIC HandelsgmbH

Quellenstraße 110, A-1100 Wien

T. +43(0)1 489 3961-0

F. +43(0)1 489 3961-7

[mail@szabo-scandic.com](mailto:mail@szabo-scandic.com)

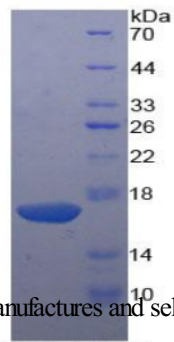
[www.szabo-scandic.com](http://www.szabo-scandic.com)

[linkedin.com/company/szaboscandic](https://www.linkedin.com/company/szaboscandic) 

Product Number	OPCD04712
Product Page	<a href="http://www.avivasysbio.com/klrb1-recombinant-protein-opcd04712.html">www.avivasysbio.com/klrb1-recombinant-protein-opcd04712.html</a>
Name	KLRB1 Recombinant Protein (OPCD04712)
Protein Size (# AA)	Lys73~Ser188 amino acids
Molecular Weight	18kDa
Tag	N-terminal His Tag
Conjugation	Unconjugated
NCBI Gene Id	3820
Host	E.coli
Purity	> 95%
Concentration	200 ug/mL (prior to lyoph)
Source	E.coli
Gene Full Name	killer cell lectin like receptor B1
Alias Symbols	CD161;CLEC5B;C-type lectin domain family 5 member B;hNKR-P1A;killer cell lectin-like receptor subfamily B member 1;killer cell lectin-like receptor subfamily B, member 1;natural killer cell surface protein P1A;NKR;NKR-P1;NKR-P1A;NKR-P1A.
Product Format	Freeze-dried Powder. PBS, pH7.4, containing 0.01% SKL, 5% Trehalose.
Description of Target	Plays an inhibitory role on natural killer (NK) cells cytotoxicity. Activation results in specific acid sphingomyelinase/SMPD1 stimulation with subsequent marked elevation of intracellular ceramide. Activation also leads to AKT1/PKB and RPS6KA1/RSK1 kinases stimulation as well as markedly enhanced T-cell proliferation induced by anti-CD3. Acts as a lectin that binds to the terminal carbohydrate Gal-alpha(1,3)Gal epitope as well as to the N-acetyllactosamine epitope. Binds also to CLEC2D/LLT1 as a ligand and inhibits NK cell-mediated cytotoxicity as well as interferon-gamma secretion in target cells.
Reconstitution and Storage	2°C to 8°C -80°C
Datasheets/Manuals	Printable datasheet for <a href="#">KLRB1 Recombinant Protein (OPCD04712)</a>
Additional Information	<b>Endotoxin Level:</b> < 1.0 EU per 1 ug (determined by the LAL method)
Additional Information	<b>Residues:</b> Lys73-Ser188
Additional Information	<b>Subcellular Location:</b> Membrane; Single-pass type II membrane prote
Uniprot ID	<a href="#">Q12918</a>
Protein Name	Killer cell lectin-like receptor subfamily B member 1
Protein Accession #	<a href="#">NP_002249.1</a>
Nucleotide Accession #	<a href="#">NM_002258.2</a>
Gene Symbol	<a href="#">KLRB1</a>
Predicted Species Reactivity	Homo sapiens Human
Application	Ctrl (+), SDS-PAGE, WB

**Image 1**

**SDS-PAGE**



KLRB1 Recombinant Protein (OPCD04712) using SDS-PAGE

AVIVA SYSTEMS BIOLOGY manufactures and sells quality antibody products covering genome wide proteins.

This product is for Research Use Only. Not for diagnostic, human, or veterinary use.

Optimal conditions of its use should be determined by end users.

AVIVA SYSTEMS BIOLOGY

6370 Nancy Ridge Dr., Suite 104, San Diego, CA 92121 USA | Tel: (858)552-6979 | [info@avivasysbio.com](mailto:info@avivasysbio.com)