



SZABO SCANDIC

Part of Europa Biosite

Produktinformation



Forschungsprodukte & Biochemikalien



Zellkultur & Verbrauchsmaterial



Diagnostik & molekulare Diagnostik



Laborgeräte & Service

Weitere Information auf den folgenden Seiten!
See the following pages for more information!



Lieferung & Zahlungsart

siehe unsere [Liefer- und Versandbedingungen](#)

Zuschläge

- Mindermengenzuschlag
- Trockeneiszuschlag
- Gefahrgutzuschlag
- Expressversand

SZABO-SCANDIC HandelsgmbH

Quellenstraße 110, A-1100 Wien

T. +43(0)1 489 3961-0

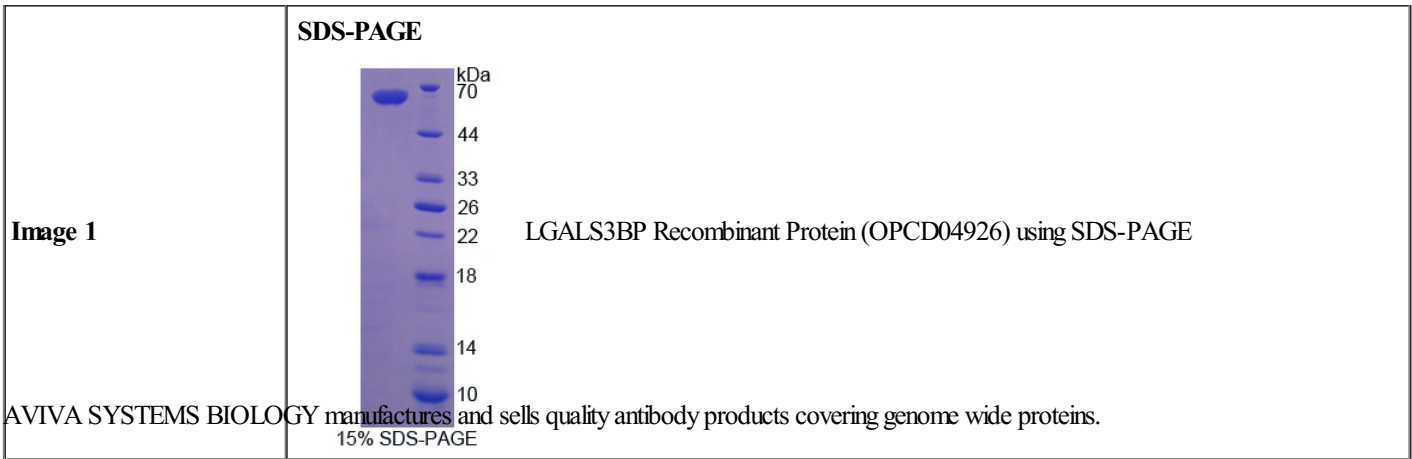
F. +43(0)1 489 3961-7

mail@szabo-scandic.com

www.szabo-scandic.com

[linkedin.com/company/szaboscandic](https://www.linkedin.com/company/szaboscandic) 

Product Number	OPCD04926
Product Page	www.avivasysbio.com/lgals3bp-recombinant-protein-opcd04926.html
Name	LGALS3BP Recombinant Protein (OPCD04926)
Protein Size (# AA)	Thr19~Val577 amino acids
Molecular Weight	66kDa
Tag	N-terminal His Tag
Conjugation	Unconjugated
NCBI Gene Id	19039
Host	E.coli
Purity	> 90%
Concentration	200 ug/mL (prior to lyoph)
Source	E.coli
Gene Full Name	lectin, galactoside-binding, soluble, 3 binding protein
Alias Symbols	90K;CyC;CyCAP;cyp-C-associated protein;galectin-3-binding protein;Lectin galactoside-binding soluble 3-binding protein;MAC-2;MAC-2BP;mama;P;peptidylprolyl isomerase C-associated protein;Ppicap;Protein MAMA;Tango;Tango10b.
Product Format	Freeze-dried Powder. PBS, pH7.4, containing 0.01% SKL, 5% Trehalose.
Description of Target	Promotes integrin-mediated cell adhesion. May stimulate host defense against viruses and tumor cells (By similarity).
Reconstitution and Storage	2°C to 8°C -80°C
Datasheets/Manuals	Printable datasheet for LGALS3BP Recombinant Protein (OPCD04926)
Additional Information	Endotoxin Level: < 1.0 EU per 1 ug (determined by the LAL method)
Additional Information	Residues: Thr19-Val577
Uniprot ID	Q07797
Protein Name	Galectin-3-binding protein
Protein Accession #	NP_035280.1
Nucleotide Accession #	NM_011150.2
Gene Symbol	Lgals3bp
Predicted Species Reactivity	Mouse Mus musculus
Application	Ctrl (+), SDS-PAGE, WB



This product is for Research Use Only. Not for diagnostic, human, or veterinary use.
Optimal conditions of its use should be determined by end users.

AVIVA SYSTEMS BIOLOGY
6370 Nancy Ridge Dr., Suite 104, San Diego, CA 92121 USA | Tel: (858)552-6979 | info@avivasysbio.com