



SZABO SCANDIC

Part of Europa Biosite

Produktinformation



Forschungsprodukte & Biochemikalien



Zellkultur & Verbrauchsmaterial



Diagnostik & molekulare Diagnostik



Laborgeräte & Service

Weitere Information auf den folgenden Seiten!
See the following pages for more information!



Lieferung & Zahlungsart

siehe unsere [Liefer- und Versandbedingungen](#)

Zuschläge

- Mindermengenzuschlag
- Trockeneiszuschlag
- Gefahrgutzuschlag
- Expressversand

SZABO-SCANDIC HandelsgmbH

Quellenstraße 110, A-1100 Wien

T. +43(0)1 489 3961-0

F. +43(0)1 489 3961-7

mail@szabo-scandic.com

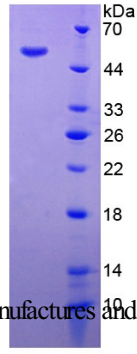
www.szabo-scandic.com

[linkedin.com/company/szaboscandic](https://www.linkedin.com/company/szaboscandic) 

Product Number	OPCD05138
Product Page	www.avivasysbio.com/masp1-recombinant-protein-opcd05138.html
Name	MASP1 Recombinant Protein (OPCD05138)
Protein Size (# AA)	His20~Ala447 amino acids
Molecular Weight	53kDa
Tag	N-terminal His Tag
Conjugation	Unconjugated
NCBI Gene Id	5648
Host	E.coli
Purity	> 95%
Concentration	200 ug/mL (prior to lyoph)
Source	E.coli
Gene Full Name	MBL associated serine protease 1
Alias Symbols	3MC1;C4/C2 activating component of Ra-reactive factor;complement factor MASP-3;complement-activating component of Ra-reactive factor;CRARF;CRARF1;mannan binding lectin serine peptidase 1;mannan-binding lectin serine protease 1;mannose-associated serine protease 1;mannose-binding lectin-associated serine protease 1;mannose-binding protein-associated serine protease;MAP1;MAP-1;MAp44;MASP;MASP3;MASP-3;PRSS5;Ra-reactive factor serine protease p100;RaRF;serine protease 5.
Product Format	Freeze-dried Powder. PBS, pH7.4, containing 0.01% SKL, 5% Trehalose.
Description of Target	Functions in the lectin pathway of complement, which performs a key role in innate immunity by recognizing pathogens through patterns of sugar moieties and neutralizing them. The lectin pathway is triggered upon binding of mannan-binding lectin (MBL) and ficolins to sugar moieties which leads to activation of the associated proteases MASP1 and MASP2. Functions as an endopeptidase and may activate MASP2 or C2 or directly activate C3 the key component of complement reaction. Isoform 2 may have an inhibitory effect on the activation of the lectin pathway of complement or may cleave IGFBP5. Also plays a role in development (PubMed:21258343).
Reconstitution and Storage	2°C to 8°C -80°C
Datasheets/Manuals	Printable datasheet for MASP1 Recombinant Protein (OPCD05138)
Additional Information	Endotoxin Level: < 1.0 EU per 1 ug (determined by the LAL method)
Additional Information	Residues: His20-Ala447
Additional Information	Subcellular Location: Secreted
Uniprot ID	P48740
Protein Name	Mannan-binding lectin serine protease 1
Protein Accession #	NP_001027019.1
Nucleotide Accession #	NM_001031849.2
Gene Symbol	MASP1
Predicted Species Reactivity	Homo sapiens Human
Application	Ctrl (+), SDS-PAGE, WB

SDS-PAGE

Image 1



MASP1 Recombinant Protein (OPCD05138) using SDS-PAGE

AVIVA SYSTEMS BIOLOGY manufactures and sells quality antibody products covering genome wide proteins.

This product is for Research Use Only. Not for diagnostic, human, or veterinary use.

Optimal conditions of its use should be determined by end users.

AVIVA SYSTEMS BIOLOGY

6370 Nancy Ridge Dr., Suite 104, San Diego, CA 92121 USA | Tel: (858)552-6979 | info@avivasysbio.com