



# SZABO SCANDIC

Part of Europa Biosite

## Produktinformation



Forschungsprodukte & Biochemikalien



Zellkultur & Verbrauchsmaterial



Diagnostik & molekulare Diagnostik



Laborgeräte & Service

Weitere Information auf den folgenden Seiten!  
See the following pages for more information!



### Lieferung & Zahlungsart

siehe unsere [Liefer- und Versandbedingungen](#)

### Zuschläge

- Mindermengenzuschlag
- Trockeneiszuschlag
- Gefahrgutzuschlag
- Expressversand

### SZABO-SCANDIC HandelsgmbH

Quellenstraße 110, A-1100 Wien

T. +43(0)1 489 3961-0

F. +43(0)1 489 3961-7

[mail@szabo-scandic.com](mailto:mail@szabo-scandic.com)

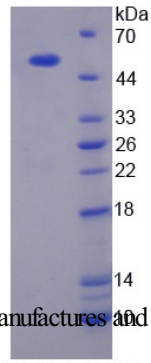
[www.szabo-scandic.com](http://www.szabo-scandic.com)

[linkedin.com/company/szaboscandic](https://www.linkedin.com/company/szaboscandic) 

<b>Product Number</b>	OPCD05139
<b>Product Page</b>	<a href="http://www.avivasysbio.com/masp1-recombinant-protein-opcd05139.html">www.avivasysbio.com/masp1-recombinant-protein-opcd05139.html</a>
<b>Name</b>	MASP1 Recombinant Protein (OPCD05139)
<b>Protein Size (# AA)</b>	His25~Arg453 amino acids
<b>Molecular Weight</b>	53kDa
<b>Tag</b>	N-terminal His Tag
<b>Conjugation</b>	Unconjugated
<b>NCBI Gene Id</b>	17174
<b>Host</b>	E.coli
<b>Purity</b>	> 90%
<b>Concentration</b>	200 ug/mL (prior to lyoph)
<b>Source</b>	E.coli
<b>Gene Full Name</b>	mannan-binding lectin serine peptidase 1
<b>Alias Symbols</b>	AW048060;CCPII;complement factor MASP-3;complement-activating component of Ra-reactive factor;Cr;Crarf;mannan-binding lectin serine protease 1;mannose-binding lectin-associated serine protease 1;mannose-binding protein-associated serine protease;MASP-1;Masp1/3;ra-reactive factor serine protease p100;raRF;serine protease 5.
<b>Product Format</b>	Freeze-dried Powder. PBS, pH7.4, containing 0.01% SKL, 5% Trehalose.
<b>Description of Target</b>	Functions in the lectin pathway of complement, which performs a key role in innate immunity by recognizing pathogens through patterns of sugar moieties and neutralizing them. The lectin pathway is triggered upon binding of mannan-binding lectin (MBL) and ficolins to sugar moieties which leads to activation of the associated proteases MASP1 and MASP2. Functions as an endopeptidase and may activate MASP2 or C2 or directly activate C3 the key component of complement reaction. Isoform 2 may have an inhibitory effect on the activation of the lectin pathway of complement or may cleave IGFBP5. Also plays a role in development.
<b>Reconstitution and Storage</b>	2°C to 8°C -80°C
<b>Datasheets/Manuals</b>	Printable datasheet for <a href="#">MASP1 Recombinant Protein (OPCD05139)</a>
<b>Additional Information</b>	<b>Endotoxin Level:</b> < 1.0 EU per 1 ug (determined by the LAL method)
<b>Additional Information</b>	<b>Residues:</b> His25-Arg453
<b>Uniprot ID</b>	<a href="#">P98064</a>
<b>Protein Name</b>	Mannan-binding lectin serine protease 1
<b>Protein Accession #</b>	<a href="#">NP_032581.2</a>
<b>Nucleotide Accession #</b>	<a href="#">NM_008555.2</a>
<b>Gene Symbol</b>	<a href="#">Masp1</a>
<b>Predicted Species Reactivity</b>	Mouse Mus musculus
<b>Application</b>	Ctrl (+), SDS-PAGE, WB

**Image 1**

**SDS-PAGE**



MASP1 Recombinant Protein (OPCD05139) using SDS-PAGE

AVIVA SYSTEMS BIOLOGY manufactures and sells quality antibody products covering genome wide proteins.

This product is for Research Use Only. Not for diagnostic, human, or veterinary use.

Optimal conditions of its use should be determined by end users.

AVIVA SYSTEMS BIOLOGY

6370 Nancy Ridge Dr., Suite 104, San Diego, CA 92121 USA | Tel: (858)552-6979 | [info@avivasysbio.com](mailto:info@avivasysbio.com)