



SZABO SCANDIC

Part of Europa Biosite

Produktinformation



Forschungsprodukte & Biochemikalien



Zellkultur & Verbrauchsmaterial



Diagnostik & molekulare Diagnostik



Laborgeräte & Service

Weitere Information auf den folgenden Seiten!
See the following pages for more information!



Lieferung & Zahlungsart

siehe unsere [Liefer- und Versandbedingungen](#)

Zuschläge

- Mindermengenzuschlag
- Trockeneiszuschlag
- Gefahrgutzuschlag
- Expressversand

SZABO-SCANDIC HandelsgmbH

Quellenstraße 110, A-1100 Wien

T. +43(0)1 489 3961-0

F. +43(0)1 489 3961-7

mail@szabo-scandic.com

www.szabo-scandic.com

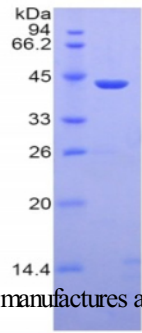
[linkedin.com/company/szaboscandic](https://www.linkedin.com/company/szaboscandic) 

Product Number	OPCD05155
Product Page	www.avivasysbio.com/mbL2-recombinant-protein-opcd05155.html
Name	MBL2 Recombinant Protein (OPCD05155)
Protein Size (# AA)	Leu130-Ile248 amino acids
Molecular Weight	43kDa
Tag	N-terminal His and GST Tag
Conjugation	Unconjugated
NCBI Gene Id	4153
Host	E.coli
Purity	> 95%
Concentration	200 ug/mL (prior to lyoph)
Source	E.coli
Gene Full Name	mannose binding lectin 2
Alias Symbols	COLEC1;collectin-1;HSMBPC;mannan-binding lectin;Mannan-binding protein;Mannose-binding lectin;mannose-binding lectin (protein C) 2, soluble (opsonic defect);mannose-binding lectin 2, soluble (opsonic defect);mannose-binding protein C;MBL;MBL2D;MBP;MBP1;MBP-C;MBPD.
Product Format	Freeze-dried Powder. PBS, pH7.4, containing 0.01% SKL, 5% Trehalose.
Description of Target	Calcium-dependent lectin involved in innate immune defense. Binds mannose, fucose and N-acetylglucosamine on different microorganisms and activates the lectin complement pathway. Binds to late apoptotic cells, as well as to apoptotic blebs and to necrotic cells, but not to early apoptotic cells, facilitating their uptake by macrophages. May bind DNA.
Reconstitution and Storage	2°C to 8°C -80°C
Datasheets/Manuals	Printable datasheet for MBL2 Recombinant Protein (OPCD05155)
Additional Information	Endotoxin Level: < 1.0 EU per 1 ug (determined by the LAL method)
Additional Information	Residues: Leu130-Ile248
Additional Information	Subcellular Location: Secreted.
Uniprot ID	P11226
Protein Name	Mannose-binding protein C
Protein Accession #	NP_000233.1
Nucleotide Accession #	NM_000242.2
Gene Symbol	MBL2
Predicted Species Reactivity	Homo sapiens Human
Application	Ctrl (+), SDS-PAGE, WB

Image 1

SDS-PAGE

Human MBL



MBL2 Recombinant Protein (OPCD05155) using SDS-PAGE

AVIVA SYSTEMS BIOLOGY manufactures and sells quality antibody products covering genome wide proteins.

This product is for Research Use Only. Not for diagnostic, human, or veterinary use.

Optimal conditions of its use should be determined by end users.

AVIVA SYSTEMS BIOLOGY

6370 Nancy Ridge Dr., Suite 104, San Diego, CA 92121 USA | Tel: (858)552-6979 | info@avivasysbio.com