



SZABO SCANDIC

Part of Europa Biosite

Produktinformation



Forschungsprodukte & Biochemikalien



Zellkultur & Verbrauchsmaterial



Diagnostik & molekulare Diagnostik



Laborgeräte & Service

Weitere Information auf den folgenden Seiten!
See the following pages for more information!



Lieferung & Zahlungsart

siehe unsere [Liefer- und Versandbedingungen](#)

Zuschläge

- Mindermengenzuschlag
- Trockeneiszuschlag
- Gefahrgutzuschlag
- Expressversand

SZABO-SCANDIC HandelsgmbH

Quellenstraße 110, A-1100 Wien

T. +43(0)1 489 3961-0

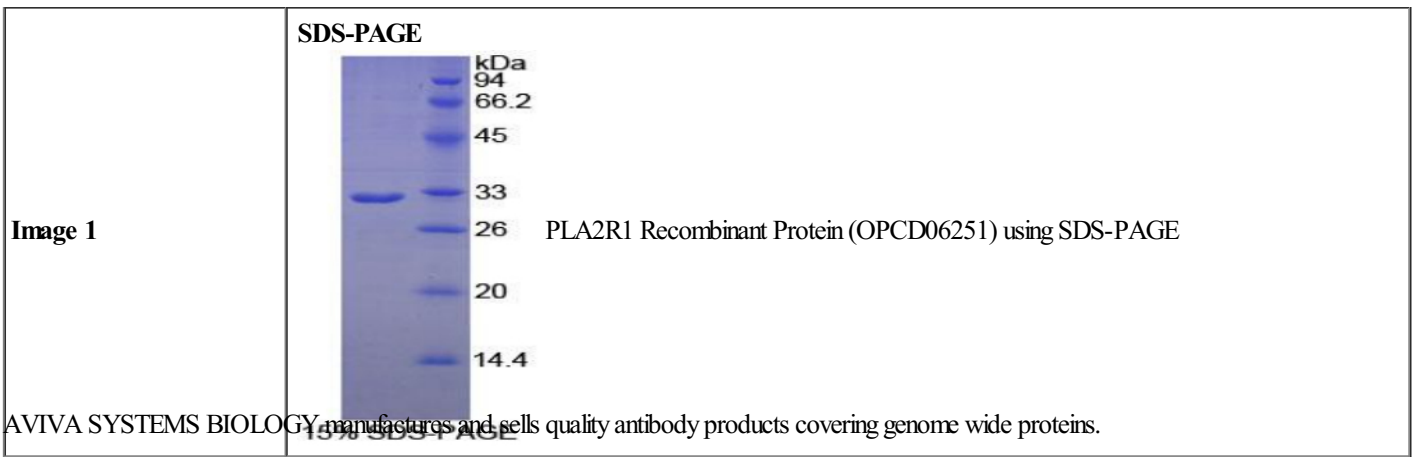
F. +43(0)1 489 3961-7

mail@szabo-scandic.com

www.szabo-scandic.com

[linkedin.com/company/szaboscandic](https://www.linkedin.com/company/szaboscandic) 

| | |
|------------------------------|---|
| Product Number | OPCD06251 |
| Product Page | www.avivasysbio.com/pla2r1-recombinant-protein-opcd06251.html |
| Name | PLA2R1 Recombinant Protein (OPCD06251) |
| Protein Size (# AA) | Tyr385~Cys643 amino acids |
| Molecular Weight | 33kDa |
| Tag | N-terminal His Tag |
| Conjugation | Unconjugated |
| NCBI Gene Id | 22925 |
| Host | E.coli |
| Purity | > 95% |
| Concentration | 200 ug/mL (prior to lyoph) |
| Source | E.coli |
| Gene Full Name | phospholipase A2 receptor 1 |
| Alias Symbols | 180 kDa secretory phospholipase A2 receptor;CLEC13C;C-type lectin domain family 13 member C;M-type receptor;phospholipase A2 receptor 1, 180kD;phospholipase A2 receptor 1, 180kDa;PLA2G1R;PLA2IR;PLA2R;PLA2-R;secretory phospholipase A2 receptor. |
| Product Format | Freeze-dried Powder. PBS, pH7.4, containing 0.01% SKL, 5% Trehalose. |
| Description of Target | Receptor for secretory phospholipase A2 (sPLA2). Acts as a receptor for phospholipase sPLA2-IB/PLA2G1B but not sPLA2-IIA/PLA2G2A. Also able to bind to snake PA2-like toxins. Although its precise function remains unclear, binding of sPLA2 to its receptor participates in both positive and negative regulation of sPLA2 functions as well as clearance of sPLA2. Binding of sPLA2-IB/PLA2G1B induces various effects depending on the cell type, such as activation of the mitogen-activated protein kinase (MAPK) cascade to induce cell proliferation, the production of lipid mediators, selective release of arachidonic acid in bone marrow-derived mast cells. In neutrophils, binding of sPLA2-IB/PLA2G1B can activate p38 MAPK to stimulate elastase release and cell adhesion. May be involved in responses in proinflammatory cytokine productions during endotoxic shock. Also has endocytic properties and rapidly internalizes sPLA2 ligands, which is particularly important for the clearance of extracellular sPLA2s to protect their potent enzymatic activities. The soluble secretory phospholipase A2 receptor form is circulating and acts as a negative regulator of sPLA2 functions by blocking the biological functions of sPLA2-IB/PLA2G1B. |
| Reconstitution and Storage | 2°C to 8°C -80°C |
| Datasheets/Manuals | Printable datasheet for PLA2R1 Recombinant Protein (OPCD06251) |
| Additional Information | Endotoxin Level: < 1.0 EU per 1 ug (determined by the LAL method) |
| Additional Information | Residues: Tyr385-Cys643 |
| Uniprot ID | Q13018 |
| Protein Name | Secretory phospholipase A2 receptor |
| Protein Accession # | NP_001007268.1 |
| Nucleotide Accession # | NM_001007267.2 |
| Gene Symbol | PLA2R1 |
| Predicted Species Reactivity | Homo sapiens Human |
| Application | Ctrl (+), SDS-PAGE, WB |



This product is for Research Use Only. Not for diagnostic, human, or veterinary use.
Optimal conditions of its use should be determined by end users.

AVIVA SYSTEMS BIOLOGY
6370 Nancy Ridge Dr., Suite 104, San Diego, CA 92121 USA | Tel: (858)552-6979 | info@avivasysbio.com