



SZABO SCANDIC

Part of Europa Biosite

Produktinformation



Forschungsprodukte & Biochemikalien



Zellkultur & Verbrauchsmaterial



Diagnostik & molekulare Diagnostik



Laborgeräte & Service

Weitere Information auf den folgenden Seiten!
See the following pages for more information!



Lieferung & Zahlungsart

siehe unsere [Liefer- und Versandbedingungen](#)

Zuschläge

- Mindermengenzuschlag
- Trockeneiszuschlag
- Gefahrgutzuschlag
- Expressversand

SZABO-SCANDIC HandelsgmbH

Quellenstraße 110, A-1100 Wien

T. +43(0)1 489 3961-0

F. +43(0)1 489 3961-7

mail@szabo-scandic.com

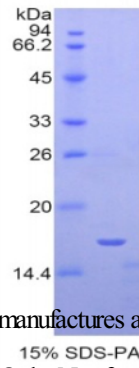
www.szabo-scandic.com

[linkedin.com/company/szaboscandic](https://www.linkedin.com/company/szaboscandic) 

Product Number	OPCD06972
Product Page	www.avivasysbio.com/siglec1-recombinant-protein-opcd06972.html
Name	SIGLEC1 Recombinant Protein (OPCD06972)
Protein Size (# AA)	Pro1272~Leu1411 amino acids
Molecular Weight	18kDa
Tag	N-terminal His Tag
Conjugation	Unconjugated
NCBI Gene Id	6614
Host	E.coli
Purity	> 95%
Concentration	200 ug/mL (prior to lyoph)
Source	E.coli
Gene Full Name	sialic acid binding Ig like lectin 1
Alias Symbols	CD169;sialic acid binding Ig-like lectin 1, sialoadhesin,Sialic acid-binding Ig-like lectin 1;sialic acid-binding immunoglobulin-like lectin 1;sialoadhesin;SIGLEC-1;SN.
Product Format	Freeze-dried Powder. PBS, pH7.4, containing 0.01% SKL, 5% Trehalose.
Description of Target	Acts as an endocytic receptor mediating clathrin dependent endocytosis. Macrophage-restricted adhesion molecule that mediates sialic-acid dependent binding to lymphocytes, including granulocytes, monocytes, natural killer cells, B-cells and CD8 T-cells. Preferentially binds to alpha-2,3-linked sialic acid (By similarity). Binds to SPN/CD43 on T-cells (By similarity). May play a role in hemopoiesis.
Reconstitution and Storage	2°C to 8°C -80°C
Datasheets/Manuals	Printable datasheet for SIGLEC1 Recombinant Protein (OPCD06972)
Additional Information	Endotoxin Level: < 1.0 EU per 1 ug (determined by the LAL method)
Additional Information	Residues: Pro1272-Leu1411
Uniprot ID	Q9BZZ2
Protein Name	Sialoadhesin
Protein Accession #	NP_075556.1
Nucleotide Accession #	NM_023068.3
Gene Symbol	SIGLEC1
Predicted Species Reactivity	Homo sapiens Human
Application	Ctrl (+), SDS-PAGE, WB

Image 1

SDS-PAGE



SIGLEC1 Recombinant Protein (OPCD06972) using SDS-PAGE

AVIVA SYSTEMS BIOLOGY manufactures and sells quality antibody products covering genome wide proteins.

This product is for Research Use Only. Not for diagnostic, human, or veterinary use.

Optimal conditions of its use should be determined by end users.

AVIVA SYSTEMS BIOLOGY

6370 Nancy Ridge Dr., Suite 104, San Diego, CA 92121 USA | Tel: (858)552-6979 | info@avivasysbio.com