



SZABO SCANDIC

Part of Europa Biosite

Produktinformation



Forschungsprodukte & Biochemikalien



Zellkultur & Verbrauchsmaterial



Diagnostik & molekulare Diagnostik



Laborgeräte & Service

Weitere Information auf den folgenden Seiten!
See the following pages for more information!



Lieferung & Zahlungsart

siehe unsere [Liefer- und Versandbedingungen](#)

Zuschläge

- Mindermengenzuschlag
- Trockeneiszuschlag
- Gefahrgutzuschlag
- Expressversand

SZABO-SCANDIC HandelsgmbH

Quellenstraße 110, A-1100 Wien

T. +43(0)1 489 3961-0

F. +43(0)1 489 3961-7

mail@szabo-scandic.com

www.szabo-scandic.com

[linkedin.com/company/szaboscandic](https://www.linkedin.com/company/szaboscandic) 

Rabbit IgG Heavy and Light Chain Cross-Adsorbed Antibody

Goat Polyclonal Conjugate DyLight® 594

Antigen Affinity Purified

Catalog No. A120-201D4

Lot No. A120-201D4-12

APPLICATIONS	IHC, ICC, F, IF
SPECIES REACTIVITY	Rabbit. Minimum reactivity to bovine, chicken, horse, human, mouse, pig and rat
AMOUNT	1 ml
CONCENTRATION	0.5 mg/ml
STORAGE/SHELF LIFE	2 – 8° C / 1 year from date of receipt
PHYSICAL STATE	Liquid
BUFFER	Phosphate Buffered Saline (PBS) containing 0.2% BSA and 0.09% Sodium Azide
FLUOROPHORE/PROTEIN	5.8
ISOTYPE	IgG
ORIGIN	USA
PRODUCTION PROCEDURES	Antiserum was cross adsorbed using bovine, chicken, horse, human, mouse, pig and rat immunosorbents to remove cross reactive antibodies. The antibody to rabbit IgG was isolated by affinity chromatography using antigen coupled to agarose beads and conjugated to DyLight® 594.

Antibody concentration was determined by extinction coefficient: absorbance at 280 nm of 1.4 equals 1.0 mg of IgG.

By immunoelectrophoresis and ELISA this antibody reacts specifically with rabbit IgG and with light chains common to other rabbit immunoglobulins. No antibody was detected against non-immunoglobulin serum proteins. Less than 0.1% cross reactivity to bovine, chicken, horse, human, mouse, pig and rat IgG was detected. This antibody may cross react with IgG from other species.

APPLICATIONS Centrifuge tube to remove product from lid. Optimal working dilutions should be determined experimentally by the investigator. Prepare working dilution immediately before use.

Immunohistochemistry 1:50 – 1:500

Immunocytochemistry 1:50 – 1:500

Flow Cytometry 1:50 – 1:200

Immunofluorescence 1:50 – 1:500

APPLICATION NOTES Not all listed applications have been specifically tested by our laboratory.

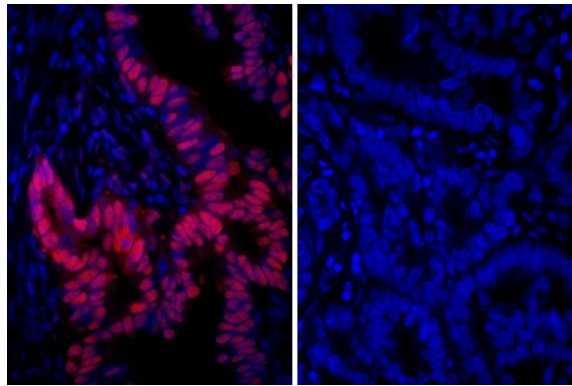
DyLight® 594 is excited at 593 (in PBS) and emits at 618 (in PBS).

DyLight® is a trademark of Thermo Fisher Scientific Inc. and its subsidiaries.

ADDITIONAL INFO <https://www.bethyl.com/product/A120-201D4>

Use the link above to view SDS, a current list of citations, and other product specific information.

This document certifies that this product has met all of the quality control standards defined by Bethyl Laboratories, Inc.
Michael Spencer, PhD Date: September 23, 2021

**Detection of human PCNA by immunofluorescence.**

Sample: FFPE section of human stomach carcinoma.

Primary Antibody: Affinity purified rabbit anti-PCNA (Cat. No. IHC-00012 Lot1) used at a dilution of 1:100 (left) and primary antibody omitted (right). *Secondary Antibody:* Red-fluorescent goat anti-rabbit IgG-heavy and light chain, cross-adsorbed Antibody DyLight® 594 Conjugated (A120-201D4 Lot 4) used at a dilution of 1:100 (5µg/ml) (left) and 1:50 (10µg/ml) (right). *Counterstain:* DAPI (blue)