



# SZABO SCANDIC

Part of Europa Biosite

## Produktinformation



Forschungsprodukte & Biochemikalien



Zellkultur & Verbrauchsmaterial



Diagnostik & molekulare Diagnostik



Laborgeräte & Service

Weitere Information auf den folgenden Seiten!  
See the following pages for more information!



### Lieferung & Zahlungsart

siehe unsere [Liefer- und Versandbedingungen](#)

### Zuschläge

- Mindermengenzuschlag
- Trockeneiszuschlag
- Gefahrgutzuschlag
- Expressversand

### SZABO-SCANDIC HandelsgmbH

Quellenstraße 110, A-1100 Wien

T. +43(0)1 489 3961-0

F. +43(0)1 489 3961-7

[mail@szabo-scandic.com](mailto:mail@szabo-scandic.com)

[www.szabo-scandic.com](http://www.szabo-scandic.com)

[linkedin.com/company/szaboscandic](https://www.linkedin.com/company/szaboscandic) 

# Rabbit IgG-heavy and light chain cross-adsorbed Antibody

Goat Polyclonal  
Antigen Affinity Purified  
Conjugate DyLight® 680  
Catalog No. A120-201D6  
Lot No. A120-201D6-4



<b>APPLICATIONS</b>	WB, IHC, ICC, F, IF
<b>SPECIES REACTIVITY</b>	Rabbit. Minimum reactivity to bovine, chicken, horse, human, mouse, pig and rat
<b>AMOUNT</b>	1 ml
<b>CONCENTRATION</b>	0.5 mg/ml
<b>STORAGE/SHELF LIFE</b>	2 – 8° C / 1 year from date of receipt
<b>PHYSICAL STATE</b>	Liquid
<b>BUFFER</b>	Phosphate Buffered Saline (PBS) containing 0.2% BSA and 0.09% Sodium Azide
<b>FLUOROPHORE/PROTEIN</b>	3.4
<b>ISOTYPE</b>	IgG
<b>ORIGIN</b>	USA
<b>PRODUCTION PROCEDURES</b>	Antiserum was cross adsorbed using bovine, chicken, horse, human, mouse, pig and rat immunosorbents to remove cross reactive antibodies. The antibody to rabbit IgG was isolated by affinity chromatography using antigen coupled to agarose beads and conjugated to DyLight® 680.

Antibody concentration was determined by extinction coefficient: absorbance at 280 nm of 1.4 equals 1.0 mg of IgG.

By immunoelectrophoresis and ELISA this antibody reacts specifically with rabbit IgG and with light chains common to other rabbit immunoglobulins. No antibody was detected against non-immunoglobulin serum proteins. Less than 0.1% cross reactivity to bovine, chicken, horse, human, mouse, pig and rat IgG was detected. This antibody may cross react with IgG from other species.

**APPLICATIONS** Centrifuge tube to remove product from lid. Optimal working dilutions should be determined experimentally by the investigator. Prepare working dilution immediately before use.

Western Blot 1:1,000 – 1:20,000. 5% non-fat dry milk in PBST or TBST is recommended for blocking and incubation of antibodies. BSA is not recommended.

Immunohistochemistry 1:50 – 1:500

Immunocytochemistry 1:50 – 1:500

Flow Cytometry 1:50 – 1:200

Immunofluorescence 1:50 – 1:500

**APPLICATION NOTES** Not all listed applications have been specifically tested by our laboratory.

DyLight® 680 is excited at 682 (in PBS) and emits at 715 (in PBS).

DyLight® is a trademark of Thermo Fisher Scientific Inc. and its subsidiaries.

**ADDITIONAL INFO** <https://www.bethyl.com/product/A120-201D6>

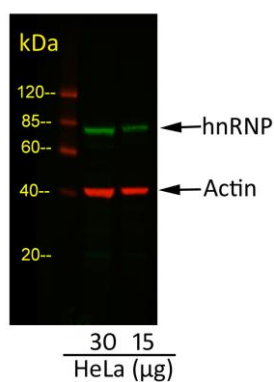
Use the link above to view SDS, a current list of citations, and other product specific information.

This document certifies that this product has met all of the quality control standards defined by Bethyl Laboratories, Inc.

Bethyl Laboratories, Inc. • 25043 West FM 1097 • Montgomery, TX 77356 •  
800.338.9579 • 936.597.6111 • 866.597.6105 (FAX) • [www.bethyl.com](http://www.bethyl.com) • [technical@bethyl.com](mailto:technical@bethyl.com)

1

For in vitro laboratory use only. Not for any clinical, therapeutic or diagnostic use in humans or animals. Not for human or animal consumption. This product may not be resold or modified for resale without the prior written approval of Bethyl Laboratories, Inc. The information provided in this data sheet is believed to be correct but does not purport to be all-inclusive and is intended to be used as a guide. Bethyl Laboratories, Inc. shall not be liable or responsible in any way for use of either this information or the material supplied. Disposal of hazardous material may be subject to federal, state or local laws or regulations.

**Detection of Actin and hnRNP in HeLa Whole Cell Lysate.**

*Primary Antibodies:* cocktail of rabbit anti-Actin A300-491A (A300-491A-5) and mouse anti-hnRNP A500-011A (A500-011A-1) at 1 µg/ml each. *Secondary Antibodies:* cocktail of Dylight®680-conjugated goat anti-rabbit A120-201D6 (A120-201D6-1) (red) and Dylight®800-conjugated goat anti-mouse A90-516D8 (A90-516D8-11) (green) at 0.5 µg/ml each. *Acquisition:* Syngene G:Box, 37 seconds (red) and 63 seconds (green).