



# SZABO SCANDIC

Part of Europa Biosite

## Produktinformation



Forschungsprodukte & Biochemikalien



Zellkultur & Verbrauchsmaterial



Diagnostik & molekulare Diagnostik



Laborgeräte & Service

Weitere Information auf den folgenden Seiten!  
See the following pages for more information!



### Lieferung & Zahlungsart

siehe unsere [Liefer- und Versandbedingungen](#)

### Zuschläge

- Mindermengenzuschlag
- Trockeneiszuschlag
- Gefahrgutzuschlag
- Expressversand

### SZABO-SCANDIC HandelsgmbH

Quellenstraße 110, A-1100 Wien

T. +43(0)1 489 3961-0

F. +43(0)1 489 3961-7

[mail@szabo-scandic.com](mailto:mail@szabo-scandic.com)

[www.szabo-scandic.com](http://www.szabo-scandic.com)

[linkedin.com/company/szaboscandic](https://www.linkedin.com/company/szaboscandic) 

# Rabbit IgG–Fc Fragment cross-adsorbed Antibody

Goat Polyclonal  
Antigen Affinity Purified  
Conjugate DyLight® 488  
Catalog No. A120–211D2  
Lot No. A120–211D2–5



**APPLICATIONS** IHC, ICC, F, IF  
**SPECIES REACTIVITY** Rabbit. Minimum reactivity to human, mouse and rat  
**ISOTYPE** IgG  
**AMOUNT** 1 ml at 0.5 mg/ml  
**STORAGE/SHELF LIFE** 2 – 8° C / 1 year from date of receipt  
**PHYSICAL STATE** Liquid  
**FLUOROPHORE/PROTEIN** 5.7  
**BUFFER** Phosphate Buffered Saline (PBS) containing 0.2% BSA and 0.09% Sodium Azide  
**ORIGIN** USA  
**PRODUCTION PROCEDURES** Antiserum was solid phase adsorbed to ensure class specificity. Antiserum was cross adsorbed using human, mouse and rat immunosorbents to remove cross reactive antibodies. The antibody to rabbit IgG was isolated by affinity chromatography using antigen coupled to agarose beads and conjugated to DyLight® 488.

Antibody concentration was determined by extinction coefficient: absorbance at 280 nm of 1.4 equals 1.0 mg of IgG.

By immunoelectrophoresis, this antibody reacts specifically with rabbit IgG. No antibody was detected against non-immunoglobulin serum proteins. Less than 1% cross reactivity to human, mouse and rat IgG was detected. This antibody may cross react with IgG from other species.

**APPLICATIONS** Centrifuge tube to remove product from lid. Optimal working dilutions should be determined experimentally by the investigator. Prepare working dilution immediately before use.

Immunohistochemistry 1:40 – 1:400  
Immunocytochemistry 1:40 – 1:400  
Flow Cytometry 1:50 – 1:200  
Immunofluorescence 1:40 – 1:400

**APPLICATION NOTES** Not all listed applications have been specifically tested by our laboratory.

DyLight® 488 is excited at 493 (in PBS) and emits at 518 (in PBS).

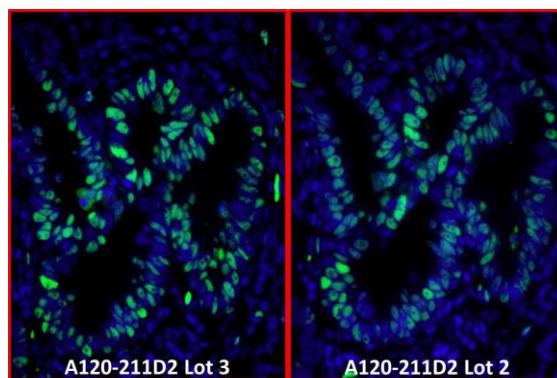
DyLight® is a trademark of Thermo Fisher Scientific Inc. and its subsidiaries.

**ADDITIONAL INFO** <https://www.bethyl.com/product/A120–211D2>  
Use the link above to view SDS, a current list of citations, and other product specific information.

This document certifies that this product has met all of the quality control standards defined by Bethyl Laboratories, Inc.

Eric McIntush, PhD | Chief Scientific Officer

Date: December 3, 2018

**Detection of human PCNA by immunofluorescence.**

*Samples:* FFPE serial sections of human breast carcinoma.

*Primary Antibody:* Affinity purified rabbit anti-PCNA (Cat.

No. IHC-00012 Lot1) used at a dilution of 1:100. *Secondary*

*Antibody:* Green-fluorescent goat anti-rabbit IgG-Fc

Fragment cross-adsorbed Antibody DyLight® 488

Conjugated (A120-211D2 Lot 3) used at a dilution of 1:50

(10µg/ml). *Counterstain:* DAPI (blue)