



SZABO SCANDIC

Part of Europa Biosite

Produktinformation



Forschungsprodukte & Biochemikalien



Zellkultur & Verbrauchsmaterial



Diagnostik & molekulare Diagnostik



Laborgeräte & Service

Weitere Information auf den folgenden Seiten!
See the following pages for more information!



Lieferung & Zahlungsart

siehe unsere [Liefer- und Versandbedingungen](#)

Zuschläge

- Mindermengenzuschlag
- Trockeneiszuschlag
- Gefahrgutzuschlag
- Expressversand

SZABO-SCANDIC HandelsgmbH

Quellenstraße 110, A-1100 Wien

T. +43(0)1 489 3961-0

F. +43(0)1 489 3961-7

mail@szabo-scandic.com

www.szabo-scandic.com

[linkedin.com/company/szaboscandic](https://www.linkedin.com/company/szaboscandic) 

Rabbit IgG-heavy and light chain cross-adsorbed Antibody

F(ab')₂ Goat Polyclonal Conjugate DyLight® 594
Antigen Affinity Purified
Catalog No. A120-314D4
Lot No. A120-314D4-6



APPLICATIONS	IHC, ICC, F, IF
SPECIES REACTIVITY	Rabbit. Minimum reactivity to bovine, chicken, horse, human, mouse, rat and sheep
ISOTYPE	IgG
AMOUNT	1 ml at 0.5 mg/ml
STORAGE/SHELF LIFE	2 - 8° C / 1 year from date of receipt
PHYSICAL STATE	Liquid
FLUOROPHORE/PROTEIN	4.4
BUFFER	Phosphate Buffered Saline (PBS) containing 0.2% BSA and 0.09% Sodium Azide
ORIGIN	USA
PRODUCTION PROCEDURES	Antiserum was cross adsorbed using bovine, chicken, horse, human, mouse, rat and sheep immunosorbents to remove cross reactive antibodies. The antibody to rabbit IgG was isolated by affinity chromatography using antigen coupled to agarose beads. F(ab') ₂ fragments were generated using a pepsin digestion. Fc fragments and whole IgG molecules have been removed. Fragments were conjugated to DyLight® 594.

Antibody concentration was determined by extinction coefficient: absorbance at 280 nm of 1.4 equals 1.0 mg of IgG.

By immunoelectrophoresis and ELISA this antibody reacts specifically with rabbit IgG and with light chains common to other rabbit immunoglobulins. No antibody was detected against non-immunoglobulin serum proteins. Less than 1% cross reactivity to bovine, chicken, horse, human, mouse, rat and sheep IgG was detected. This antibody may cross react with IgG from other species.

APPLICATIONS Centrifuge tube to remove product from lid. Optimal working dilutions should be determined experimentally by the investigator. Prepare working dilution immediately before use.

Immunohistochemistry 1:50 - 1:500

Immunocytochemistry 1:50 - 1:500

Flow Cytometry 1:50 - 1:200

Immunofluorescence 1:50 - 1:500

APPLICATION NOTES Not all listed applications have been specifically tested by our laboratory.

DyLight® 594 is excited at 593 (in PBS) and emits at 618 (in PBS).

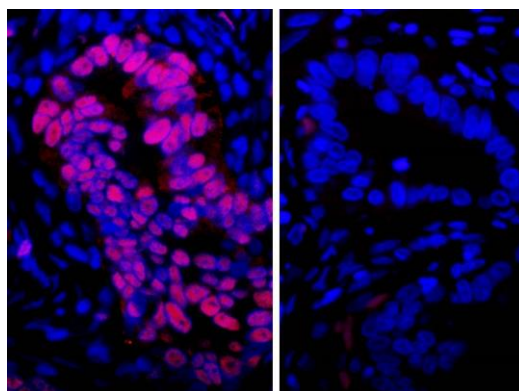
DyLight® is a trademark of Thermo Fisher Scientific Inc. and its subsidiaries.

ADDITIONAL INFO <https://www.bethyl.com/product/A120-314D4>
Use the link above to view SDS, a current list of citations, and other product specific information.

This document certifies that this product has met all of the quality control standards defined by Bethyl Laboratories, Inc.

Eric McIntush, PhD | Chief Scientific Officer

Date: December 3, 2018

**Detection of human PCNA by immunofluorescence.**

Sample: FFPE serial sections of human stomach carcinoma. *Primary Antibody:* Affinity purified rabbit anti-PCNA (Cat. No. IHC-00012 Lot1) used at a dilution of 1:100 (left) and primary antibody omitted (right). *Secondary Antibody:* Red-fluorescent F(ab')₂ goat anti-rabbit IgG-heavy and light chain cross-adsorbed Antibody DyLight® 594 Conjugated (A120-314D4 Lot 2) used at a dilution of 1:50 (10µg/ml) (left) and 1:50 (10µg/ml) (right). *Counterstain:* DAPI (blue)