



# SZABO SCANDIC

Part of Europa Biosite

## Produktinformation



Forschungsprodukte & Biochemikalien



Zellkultur & Verbrauchsmaterial



Diagnostik & molekulare Diagnostik



Laborgeräte & Service

Weitere Information auf den folgenden Seiten!  
See the following pages for more information!



### Lieferung & Zahlungsart

siehe unsere [Liefer- und Versandbedingungen](#)

### Zuschläge

- Mindermengenzuschlag
- Trockeneiszuschlag
- Gefahrgutzuschlag
- Expressversand

### SZABO-SCANDIC HandelsgmbH

Quellenstraße 110, A-1100 Wien

T. +43(0)1 489 3961-0

F. +43(0)1 489 3961-7

[mail@szabo-scandic.com](mailto:mail@szabo-scandic.com)

[www.szabo-scandic.com](http://www.szabo-scandic.com)

[linkedin.com/company/szaboscandic](https://www.linkedin.com/company/szaboscandic) 

# SARS-CoV-2 Spike RBD Antibody

Rabbit Polyclonal

Affinity Purified Protein ID YP\_009724390.1

Catalog No. A170-100A GeneID 43740568

Lot No. A170-100A-1

---

**APPLICATIONS** WB

**AMOUNT** 0.1 ml

**CONCENTRATION** 1 mg/ml

**STORAGE/SHELF LIFE** 2 – 8°C / 1 year from date of receipt

**PHYSICAL STATE** Liquid

**BUFFER** Tris-citrate/phosphate buffer, pH 7 to 8 containing 0.09% Sodium Azide

**ISOTYPE** IgG

**ORIGIN** USA

**PRODUCTION PROCEDURES** The antibody was isolated by affinity chromatography using antigen coupled to agarose beads.

Immunogen was HEK293-derived SARS CoV-2 S-RBD protein fragment (Ala319-Phe541) using the numbering given in entry YP\_009724390.1.

Antibody concentration was determined by extinction coefficient: absorbance at 280 nm of 1.4 equals 1.0 mg of IgG.

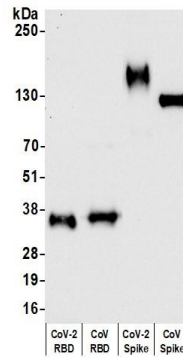
**APPLICATIONS** Centrifuge tube to remove product from lid. Optimal working dilutions should be determined experimentally by the investigator. Prepare working dilution immediately before use.

Western Blot 1:10,000 – 1:25,000

**ADDITIONAL INFO** <https://www.bethyl.com/product/A170-100A>

Use the link above to view SDS, a current list of citations, and other product specific information.

This document certifies that this product has met all of the quality control standards defined by Bethyl Laboratories, Inc.  
Michael Spencer, PhD Date: May 3, 2022



**Detection of Coronavirus Spike protein RBD by western blot.** *Samples:* Purified recombinant CoV-2 RBD (1  $\mu$ g), CoV RBD (1  $\mu$ g), CoV-2 Spike (1  $\mu$ g), and CoV Spike (0.05  $\mu$ g) diluted in HEK293T cells. *Antibody:* Affinity purified rabbit anti-CoV-2 Spike RBD antibody (A170-100A) used for WB at 0.04  $\mu$ g/ml. *Detection:* Chemiluminescence with an exposure time of 30 seconds.