



# SZABO SCANDIC

Part of Europa Biosite

## Produktinformation



Forschungsprodukte & Biochemikalien



Zellkultur & Verbrauchsmaterial



Diagnostik & molekulare Diagnostik



Laborgeräte & Service

Weitere Information auf den folgenden Seiten!  
See the following pages for more information!



### Lieferung & Zahlungsart

siehe unsere [Liefer- und Versandbedingungen](#)

### Zuschläge

- Mindermengenzuschlag
- Trockeneiszuschlag
- Gefahrgutzuschlag
- Expressversand

### SZABO-SCANDIC HandelsgmbH

Quellenstraße 110, A-1100 Wien

T. +43(0)1 489 3961-0

F. +43(0)1 489 3961-7

[mail@szabo-scandic.com](mailto:mail@szabo-scandic.com)

[www.szabo-scandic.com](http://www.szabo-scandic.com)

[linkedin.com/company/szaboscandic](https://www.linkedin.com/company/szaboscandic) 

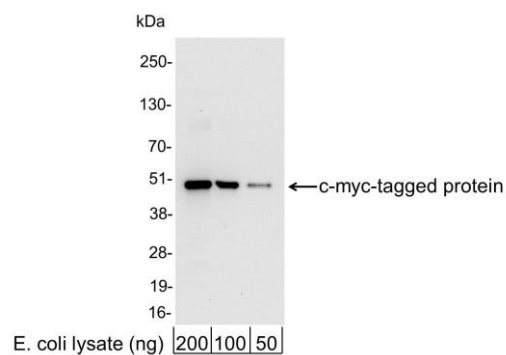
# Myc Tag Antibody

Rabbit Polyclonal	Conjugate	HRP
Antigen Affinity Purified		
Catalog No. A190-105P	GeneID	4609
Lot No. A190-105P-20		

---

<b>APPLICATIONS</b>	WB, IHC, ICC, ELISA								
<b>AMOUNT</b>	0.1 ml								
<b>CONCENTRATION</b>	1 mg/ml								
<b>STORAGE/SHELF LIFE</b>	2 - 8°C / 1 year from date of receipt								
<b>PHYSICAL STATE</b>	Liquid								
<b>BUFFER</b>	Phosphate Buffered Saline (PBS) containing 0.2% BSA and 0.05% Pro-Clean 400								
<b>ISOTYPE</b>	IgG								
<b>ORIGIN</b>	USA								
<b>PRODUCTION PROCEDURES</b>	<p>Rabbits were immunized with a synthetic peptide representing amino acid residues 410-419 (EQKLISEEDL) of human myc conjugated to KLH. Antibody was isolated by affinity chromatography using the peptide immobilized on solid support and conjugated to horseradish peroxidase (HRP).</p> <p>Antibody concentration was determined by extinction coefficient prior to conjugation: absorbance at 280 nm of 1.4 equals 1.0 mg of IgG. Molar enzyme/antibody protein ratio is 4:1.</p>								
<b>APPLICATIONS</b>	<p>Centrifuge tube to remove product from lid. Optimal working dilutions should be determined experimentally by the investigator. Prepare working dilution immediately before use.</p> <table><tr><td>Western Blot</td><td>1:1,000 - 1:30,000</td></tr><tr><td>Immunohistochemistry</td><td>Not applicable</td></tr><tr><td>Immunocytochemistry</td><td>1:200 - 1:500</td></tr><tr><td>ELISA</td><td>1:10,000 - 1:100,000</td></tr></table>	Western Blot	1:1,000 - 1:30,000	Immunohistochemistry	Not applicable	Immunocytochemistry	1:200 - 1:500	ELISA	1:10,000 - 1:100,000
Western Blot	1:1,000 - 1:30,000								
Immunohistochemistry	Not applicable								
Immunocytochemistry	1:200 - 1:500								
ELISA	1:10,000 - 1:100,000								
<b>APPLICATION NOTES</b>	Not all listed applications have been specifically tested by our laboratory.								
<b>ADDITIONAL INFO</b>	<p>Validation by Western Blot was performed using a Western Blot Gel 4-20%. <a href="https://www.fortislife.com/p/A190-105P">https://www.fortislife.com/p/A190-105P</a> Use the link above to view SDS, a current list of citations, and other product specific information.</p>								

This document certifies that this product has met all of the quality control standards defined by Bethyl Laboratories, Inc.  
Michael Spencer, PhD Date: July 1, 2022

**Detection of c-myc-tagged Protein by western blot.**

*Samples:* 200, 100, or 50 ng of E. coli whole cell lysate expressing a multi-tag fusion protein. *Antibodies:* Affinity-purified, HRP-conjugated, rabbit anti-Myc Tag antibody A190-105P used for WB at 0.04 µg/ml (1:25,000).

*Detection:* Chemiluminescence with an exposure time of 10 seconds.