



SZABO SCANDIC

Part of Europa Biosite

Produktinformation



Forschungsprodukte & Biochemikalien



Zellkultur & Verbrauchsmaterial



Diagnostik & molekulare Diagnostik



Laborgeräte & Service

Weitere Information auf den folgenden Seiten!
See the following pages for more information!



Lieferung & Zahlungsart

siehe unsere [Liefer- und Versandbedingungen](#)

Zuschläge

- Mindermengenzuschlag
- Trockeneiszuschlag
- Gefahrgutzuschlag
- Expressversand

SZABO-SCANDIC HandelsgmbH

Quellenstraße 110, A-1100 Wien

T. +43(0)1 489 3961-0

F. +43(0)1 489 3961-7

mail@szabo-scandic.com

www.szabo-scandic.com

[linkedin.com/company/szaboscandic](https://www.linkedin.com/company/szaboscandic) 

HA Tag Antibody

Rabbit Polyclonal

Antigen Affinity Purified

Catalog No. A190-108A

Lot No. A190-108A-10



APPLICATIONS WB, IP, ICC, ELISA

AMOUNT 0.1 ml

CONCENTRATION 1 mg/ml

STORAGE/SHELF LIFE 2 - 8° C / 1 year from date of receipt

PHYSICAL STATE Liquid

BUFFER Phosphate Buffered Saline (PBS) containing 0.09% Sodium Azide

ISOTYPE IgG

ORIGIN USA

PRODUCTION PROCEDURES Rabbits were immunized with HA (YPYDVPDYA) conjugated to KLH. Antibody was isolated by affinity chromatography using the peptide immobilized on solid support.

Antibody concentration was determined by extinction coefficient: absorbance at 280 nm of 1.4 equals 1.0 mg of IgG.

APPLICATIONS Centrifuge tube to remove product from lid. Optimal working dilutions should be determined experimentally by the investigator. Prepare working dilution immediately before use.

Western Blot 1:1,000 - 1:30,000

Immunoprecipitation 1 - 4 µg/mg lysate

Immunocytochemistry 1:100 - 1:400

ELISA 1:1,000 - 1:30,000; for coating plates 1:100 - 1:500

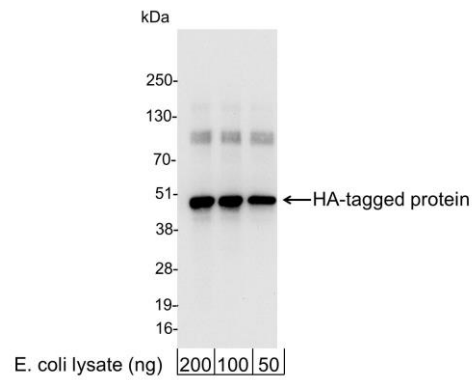
APPLICATION NOTES Not all listed applications have been specifically tested by our laboratory.

Validation by Western Blot was performed using a Western Blot Gel 4-20%.

ADDITIONAL INFO <https://www.bethyl.com/product/A190-108A>

Use the link above to view SDS, a current list of citations, and other product specific information.

This document certifies that this product has met all of the quality control standards defined by Bethyl Laboratories, Inc.
Eric McIntush, PhD | Chief Scientific Officer Date: October 15, 2020



Detection of HA-tagged Protein by western blot. *Samples:* 200, 100, or 50 ng of E. coli whole cell lysate expressing a multi-tag fusion protein. *Antibody:* Affinity purified rabbit anti-HA antibody A190-108A used for WB at 0.04 $\mu\text{g/ml}$ (1:25,000). *Detection:* Chemiluminescence with an exposure time of 3 seconds.