



# SZABO SCANDIC

Part of Europa Biosite

## Produktinformation



Forschungsprodukte & Biochemikalien



Zellkultur & Verbrauchsmaterial



Diagnostik & molekulare Diagnostik



Laborgeräte & Service

Weitere Information auf den folgenden Seiten!  
See the following pages for more information!



### Lieferung & Zahlungsart

siehe unsere [Liefer- und Versandbedingungen](#)

### Zuschläge

- Mindermengenzuschlag
- Trockeneiszuschlag
- Gefahrgutzuschlag
- Expressversand

### SZABO-SCANDIC HandelsgmbH

Quellenstraße 110, A-1100 Wien

T. +43(0)1 489 3961-0

F. +43(0)1 489 3961-7

[mail@szabo-scandic.com](mailto:mail@szabo-scandic.com)

[www.szabo-scandic.com](http://www.szabo-scandic.com)

[linkedin.com/company/szaboscandic](https://www.linkedin.com/company/szaboscandic) 

# GST Tag Antibody

Rabbit Polyclonal Conjugate HRP

Antigen Affinity Purified

Catalog No. A190-122P

Lot No. A190-122P-13

---

<b>APPLICATIONS</b>	WB, IHC, ICC, ELISA
<b>AMOUNT</b>	0.1 ml
<b>CONCENTRATION</b>	1 mg/ml
<b>STORAGE/SHELF LIFE</b>	2 - 8° C / 1 year from date of receipt
<b>PHYSICAL STATE</b>	Liquid
<b>BUFFER</b>	Phosphate Buffered Saline (PBS) containing 0.2% BSA and 0.05% Pro-Clean 400
<b>ISOTYPE</b>	IgG
<b>ORIGIN</b>	USA
<b>PRODUCTION PROCEDURES</b>	Rabbits were immunized with Glutathione-S-Transferase (GST) from <i>Schistosoma japonicum</i> . Antibody was isolated by affinity chromatography using GST immobilized on solid support and conjugated to horseradish peroxidase (HRP).

Antibody concentration was determined by extinction coefficient prior to conjugation: absorbance at 280 nm of 1.4 equals 1.0 mg of IgG.

Molar enzyme/antibody protein ratio is 4:1.

**APPLICATIONS** Centrifuge tube to remove product from lid. Optimal working dilutions should be determined experimentally by the investigator. Prepare working dilution immediately before use.

Western Blot 1:1,000 – 1:30,000

Immunohistochemistry Not applicable

Immunocytochemistry 1:200 – 1:500

ELISA 1:10,000 – 1:100,000

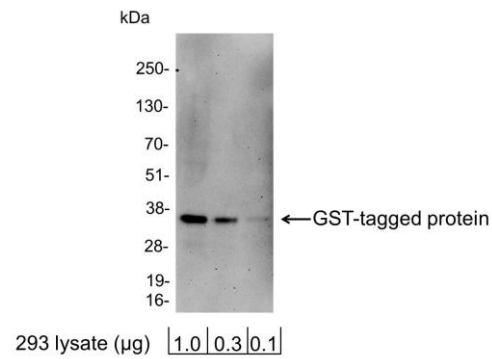
**APPLICATION NOTES** Not all listed applications have been specifically tested by our laboratory.

Validation by Western Blot was performed using a Western Blot Gel 4-20%.

**ADDITIONAL INFO** <https://www.bethyl.com/product/A190-122P>

Use the link above to view SDS, a current list of citations, and other product specific information.

This document certifies that this product has met all of the quality control standards defined by Bethyl Laboratories, Inc.  
Michael Spencer, PhD Date: September 30, 2021

**Detection of GST-tagged Protein by western blot.**

*Samples:* 1.0, 0.3, or 0.1 µg of 293 cell lysate expressing a GST-tag fusion protein. *Antibodies:* Affinity-purified, HRP-conjugated, rabbit anti-GST antibody A190-122P used for WB at 0.2 µg/ml (1:5,000). *Detection:* Chemiluminescence with an exposure time of 3 minutes.