



SZABO SCANDIC

Part of Europa Biosite

Produktinformation



Forschungsprodukte & Biochemikalien



Zellkultur & Verbrauchsmaterial



Diagnostik & molekulare Diagnostik



Laborgeräte & Service

Weitere Information auf den folgenden Seiten!
See the following pages for more information!



Lieferung & Zahlungsart

siehe unsere [Liefer- und Versandbedingungen](#)

Zuschläge

- Mindermengenzuschlag
- Trockeneiszuschlag
- Gefahrgutzuschlag
- Expressversand

SZABO-SCANDIC HandelsgmbH

Quellenstraße 110, A-1100 Wien

T. +43(0)1 489 3961-0

F. +43(0)1 489 3961-7

mail@szabo-scandic.com

www.szabo-scandic.com

[linkedin.com/company/szaboscandic](https://www.linkedin.com/company/szaboscandic) 

E Tag Antibody

Goat Polyclonal Conjugate HRP

Antigen Affinity Purified

Catalog No. A190-132P

Lot No. A190-132P-20

APPLICATIONS	WB, IHC, ICC, ELISA
AMOUNT	0.1 ml
CONCENTRATION	1 mg/ml
STORAGE/SHELF LIFE	2 - 8°C / 1 year from date of receipt
PHYSICAL STATE	Liquid
BUFFER	Phosphate Buffered Saline (PBS) containing 0.2% BSA and 0.05% Pro-Clean 400
ISOTYPE	IgG
ORIGIN	USA
PRODUCTION PROCEDURES	Goats were immunized with E-Tag (GAPVPYPDPLEPR) conjugated to KLH. Antibody was isolated by affinity chromatography using the peptide immobilized on solid support and conjugated to horseradish peroxidase (HRP).

Antibody concentration was determined by extinction coefficient prior to conjugation: absorbance at 280 nm of 1.4 equals 1.0 mg of IgG. Molar enzyme/antibody protein ratio is 4:1.

APPLICATIONS Centrifuge tube to remove product from lid. Optimal working dilutions should be determined experimentally by the investigator. Prepare working dilution immediately before use.

Western Blot	1:1,000 – 1:30,000
Immunohistochemistry	Not applicable
Immunocytochemistry	1:200 – 1:500
ELISA	1:10,000 – 1:100,000

APPLICATION NOTES Not all listed applications have been specifically tested by our laboratory.

ADDITIONAL INFO Validation by Western Blot was performed using a Western Blot Gel 4-20%.

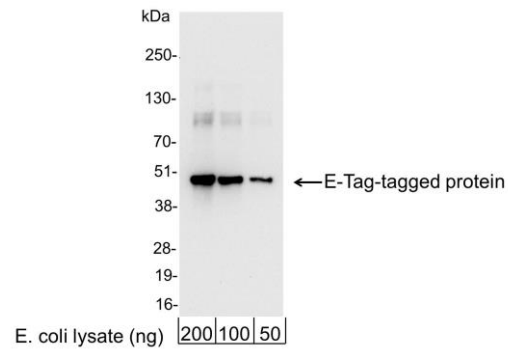
<https://www.fortislife.com/p/A190-132P>

Use the link above to view SDS, a current list of citations, and other product specific information.

This document certifies that this product has met all of the quality control standards defined by Bethyl Laboratories, Inc.

Michael Spencer, PhD

Date: August 22, 2022

**Detection of E-Tag-tagged Protein by western blot.**

Samples: 200, 100, or 50 ng of E. coli whole cell lysate expressing a multi-tag fusion protein. *Antibodies:* Affinity-purified, HRP-conjugated, goat anti-E-Tag antibody A190-132P used for WB at 0.04 µg/ml (1:25,000).

Detection: Chemiluminescence with an exposure time of 3 seconds.