



# SZABO SCANDIC

Part of Europa Biosite

## Produktinformation



Forschungsprodukte & Biochemikalien



Zellkultur & Verbrauchsmaterial



Diagnostik & molekulare Diagnostik



Laborgeräte & Service

Weitere Information auf den folgenden Seiten!  
See the following pages for more information!



### Lieferung & Zahlungsart

siehe unsere [Liefer- und Versandbedingungen](#)

### Zuschläge

- Mindermengenzuschlag
- Trockeneiszuschlag
- Gefahrgutzuschlag
- Expressversand

### SZABO-SCANDIC HandelsgmbH

Quellenstraße 110, A-1100 Wien

T. +43(0)1 489 3961-0

F. +43(0)1 489 3961-7

[mail@szabo-scandic.com](mailto:mail@szabo-scandic.com)

[www.szabo-scandic.com](http://www.szabo-scandic.com)

[linkedin.com/company/szaboscandic](https://www.linkedin.com/company/szaboscandic) 

# HSV Tag Antibody

Rabbit Polyclonal

Antigen Affinity Purified

Catalog No. A190-137A

Lot No. A190-137A-230130

---

|                              |  |
|------------------------------|--|
| <b>APPLICATIONS</b>          | WB, IP, ICC, ELISA   |
| <b>AMOUNT</b>                | 0.1 ml   |
| <b>CONCENTRATION</b>         | 1 mg/ml  |
| <b>STORAGE/SHELF LIFE</b>    | 2 - 8°C / 1 year from date of receipt  |
| <b>PHYSICAL STATE</b>        | Liquid   |
| <b>BUFFER</b>                | Phosphate Buffered Saline (PBS) containing 0.09% Sodium Azide  |
| <b>ISOTYPE</b>               | IgG  |
| <b>ORIGIN</b>                | USA  |
| <b>PRODUCTION PROCEDURES</b> | Rabbits were immunized with HSV (SQPELAPEDPED) conjugated to KLH. Antibody was isolated by affinity chromatography using the peptide immobilized on solid support. |

Antibody concentration was determined by extinction coefficient: absorbance at 280 nm of 1.4 equals 1.0 mg of IgG.

**APPLICATIONS** Centrifuge tube to remove product from lid. Optimal working dilutions should be determined experimentally by the investigator. Prepare working dilution immediately before use.

|                     |  |
|---------------------|--|
| Western Blot        | 1:1,000 - 1:30,000                                   |
| Immunoprecipitation | 1 - 4 µg/mg lysate                                   |
| Immunocytochemistry | 1:100 - 1:400  |
| ELISA               | 1:1,000 - 1:30,000; for coating plates 1:100 - 1:500 |

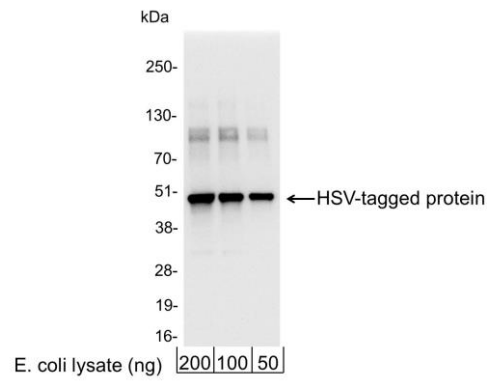
**APPLICATION NOTES** Not all listed applications have been specifically tested by our laboratory.

Validation by Western Blot was performed using a Western Blot Gel 4-20%.

**ADDITIONAL INFO** <https://www.fortislife.com/p/A190-137A>

Use the link above to view SDS, a current list of citations, and other product specific information.

This document certifies that this product has met all of the quality control standards defined by Bethyl Laboratories, Inc.  
Michael Spencer, PhD Date: January 30, 2023

**Detection of HSV-tagged Protein by western blot.**

*Samples:* 200, 100, or 50 ng of E. coli whole cell lysate expressing a multi-tag fusion protein. *Antibodies:* Affinity purified, rabbit anti-HSV antibody A190-137A used for WB at 0.04 µg/ml (1:25,000). *Detection:* Chemiluminescence with an exposure time of 3 seconds.