



# SZABO SCANDIC

Part of Europa Biosite

## Produktinformation



Forschungsprodukte & Biochemikalien



Zellkultur & Verbrauchsmaterial



Diagnostik & molekulare Diagnostik



Laborgeräte & Service

Weitere Information auf den folgenden Seiten!  
See the following pages for more information!



### Lieferung & Zahlungsart

siehe unsere [Liefer- und Versandbedingungen](#)

### Zuschläge

- Mindermengenzuschlag
- Trockeneiszuschlag
- Gefahrgutzuschlag
- Expressversand

### SZABO-SCANDIC HandelsgmbH

Quellenstraße 110, A-1100 Wien

T. +43(0)1 489 3961-0

F. +43(0)1 489 3961-7

[mail@szabo-scandic.com](mailto:mail@szabo-scandic.com)

[www.szabo-scandic.com](http://www.szabo-scandic.com)

[linkedin.com/company/szaboscandic](https://www.linkedin.com/company/szaboscandic) 

# ECS (DYKDDDDK) Tag Recombinant Monoclonal Antibody [BLRE00G]

Rabbit Recombinant Monoclonal

Purified

Catalog No. A191-100

Lot No. A191-100-1

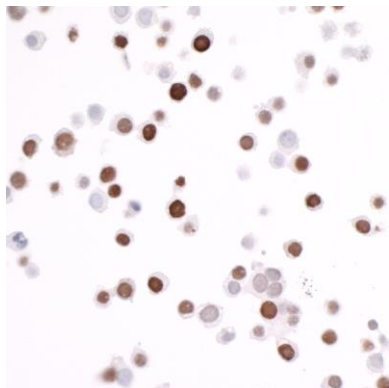


---

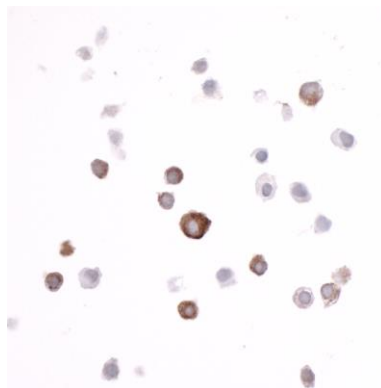
<b>APPLICATIONS</b>	WB, IP, ICC, ELISA
<b>AMOUNT</b>	100 µl (50+ tests)
<b>CONCENTRATION</b>	100 µg/ml
<b>STORAGE/SHELF LIFE</b>	2 – 8° C / 1 year from date of receipt
<b>PHYSICAL STATE</b>	Liquid
<b>BUFFER</b>	Borate Buffered Saline (BBS) pH 8.2 with 0.1% BSA and 0.09% Sodium Azide
<b>ISOTYPE</b>	IgG
<b>CLONE #</b>	BLRE00G
<b>ORIGIN</b>	USA
<b>PRODUCTION PROCEDURES</b>	Recombinant antibody was purified from cell culture supernatant.  Immunogen was a peptide representing ECS, Enterokinase Cleavage Site (DYKDDDDK)
<b>APPLICATIONS</b>	Centrifuge tube to remove product from lid. Optimal working dilutions should be determined experimentally by the investigator. Prepare working dilution immediately before use.  Western Blot                      1:1000  Immunoprecipitation            20 µl/mg lysate  Immunocytochemistry        1:1000 to 1:5000. Epitope retrieval with citrate buffer pH6.0 is recommended for FFPE cell sections.  ELISA                                1:1,000 – 1:75,000; for coating plates 1:100 – 1:500
<b>ADDITIONAL INFO</b>	<a href="https://www.bethyl.com/product/A191-100">https://www.bethyl.com/product/A191-100</a> Use the link above to view SDS, a current list of citations, and other product specific information.

This document certifies that this product has met all of the quality control standards defined by Bethyl Laboratories, Inc.  
Eric McIntush, PhD | Chief Scientific Officer Date: September 17, 2019

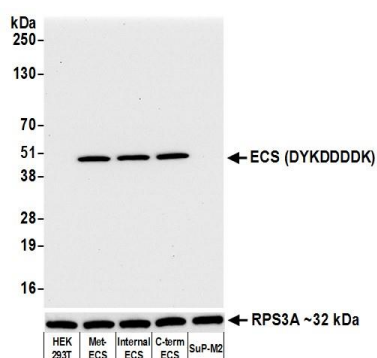
# ECS (DYKDDDDK) Tag Recombinant Monoclonal Antibody [BLRE00G] A191-100



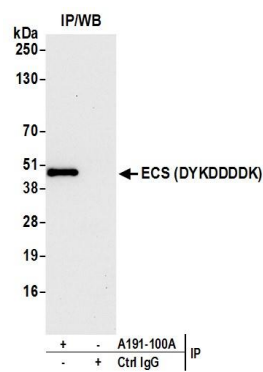
**Detection of ECS (DYKDDDDK) Tag in FFPE HEK293 cells expressing ECS (DYKDDDDK)-tagged nuclear protein by ICC.** *Antibody:* Rabbit anti-ECS (DYKDDDDK) Tag recombinant monoclonal antibody [BLRE00G] (A191-100 lot 1). *Secondary:* HRP-conjugated goat anti-rabbit IgG (A120-501P). *Substrate:* DAB.



**Detection of ECS (DYKDDDDK) Tag in FFPE HEK293 cells expressing an ECS (DYKDDDDK)-tagged cytoplasmic protein by ICC.** *Antibody:* Rabbit anti-ECS (DYKDDDDK) Tag recombinant monoclonal antibody [BLRE00G] (A191-100 lot 1). *Secondary:* HRP-conjugated goat anti-rabbit IgG (A120-501P). *Substrate:* DAB.

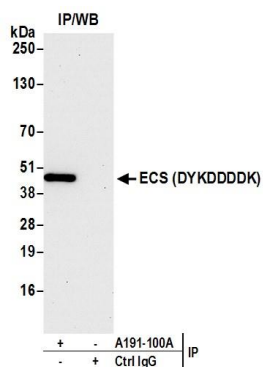


**Detection of ECS (DYKDDDDK)-tagged protein by western blot of lysate from non-transfected human HEK293 cells, HEK293 transfected with Met-ECS(DYKDDDDK)-IDO1, HEK293 transfected with IDO1-ECS(DYKDDDDK)-HIS (Internal Tag), HEK293 transfected with IDO1-HIS-ECS(DYKDDDDK) (C-terminal Tag), and SUP-M2 cells.** *Antibody:* Rabbit anti-ECS (DYKDDDDK) Tag recombinant monoclonal antibody [BLRE00G] (A191-100 lot 1) used at 1:1000. *Secondary:* HRP-conjugated goat anti-rabbit IgG (A120-101P). Chemiluminescence with an exposure time of 10 seconds. Lower Panel: Rabbit anti-RPS3A (A305-003A).



**Detection of ECS (DYKDDDDK) Tag by western blot of immunoprecipitates from HEK293 transfected with Met-ECS(DYKDDDDK)-IDO1 lysate.** *Antibody:* Rabbit anti-ECS (DYKDDDDK) Tag recombinant monoclonal antibody [BLRE00G] (A191-100 lot 1) used for IP at 20 µl/mg lysate. For blotting immunoprecipitated ECS (DYKDDDDK) Tag, A191-100 was used at 1:1000. Chemiluminescence with an exposure time of 10 seconds.

## ECS (DYKDDDDK) Tag Recombinant Monoclonal Antibody [BLRE00 A191-100



**Detection of ECS (DYKDDDDK) Tag by western blot of immunoprecipitates from HEK293 transfected with IDO1-HIS-ECS(DYKDDDDK) (C-terminal Tag) lysate. *Antibody:*** Rabbit anti-ECS (DYKDDDDK) Tag recombinant monoclonal antibody [BLRE00G] (A191-100 lot 1) used for IP at 20  $\mu$ l/mg lysate. For blotting immunoprecipitated ECS (DYKDDDDK) Tag, A191-100 was used at 1:1000. Chemiluminescence with an exposure time of 10 seconds.