



# SZABO SCANDIC

Part of Europa Biosite

## Produktinformation



Forschungsprodukte & Biochemikalien



Zellkultur & Verbrauchsmaterial



Diagnostik & molekulare Diagnostik



Laborgeräte & Service

Weitere Information auf den folgenden Seiten!  
See the following pages for more information!



### Lieferung & Zahlungsart

siehe unsere [Liefer- und Versandbedingungen](#)

### Zuschläge

- Mindermengenzuschlag
- Trockeneiszuschlag
- Gefahrgutzuschlag
- Expressversand

### SZABO-SCANDIC HandelsgmbH

Quellenstraße 110, A-1100 Wien

T. +43(0)1 489 3961-0

F. +43(0)1 489 3961-7

[mail@szabo-scandic.com](mailto:mail@szabo-scandic.com)

[www.szabo-scandic.com](http://www.szabo-scandic.com)

[linkedin.com/company/szaboscandic](https://www.linkedin.com/company/szaboscandic) 

# Myc Tag Recombinant Monoclonal Antibody [BLRE01G]

Rabbit Recombinant Monoclonal

Purified

Catalog No. A191-101

Lot No. A191-101-1



<b>APPLICATIONS</b>	WB, IP, ICC, ELISA
<b>AMOUNT</b>	100 $\mu$ l (50+ tests)
<b>CONCENTRATION</b>	250 $\mu$ g/ml
<b>STORAGE/SHELF LIFE</b>	2 - 8° C / 1 year from date of receipt
<b>PHYSICAL STATE</b>	Liquid
<b>BUFFER</b>	Borate Buffered Saline (BBS) pH 8.2 with 0.1% BSA and 0.09% Sodium Azide
<b>ISOTYPE</b>	IgG
<b>CLONE #</b>	BLRE01G
<b>ORIGIN</b>	USA
<b>PRODUCTION PROCEDURES</b>	Recombinant antibody was purified from cell culture supernatant.

Immunogen was a peptide representing amino acid residues 410-419 (EQKLISEEDL) of human myc (Gene ID 4609).

## APPLICATIONS

Centrifuge tube to remove product from lid. Optimal working dilutions should be determined experimentally by the investigator. Prepare working dilution immediately before use.

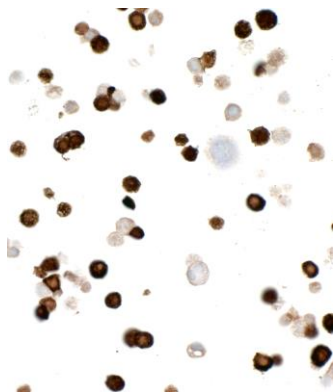
Western Blot	1:1000
Immunoprecipitation	20 $\mu$ l/1 mg lysate
Immunocytochemistry	1:100 to 1:500. Epitope retrieval with citrate buffer pH6.0 is recommended for FFPE cell sections.
ELISA	1:1,000 - 1:50,000; for coating plates 1:100 - 1:500

## ADDITIONAL INFO

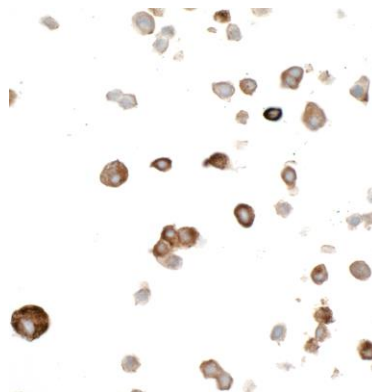
<https://www.bethyl.com/product/A191-101>

Use the link above to view SDS, a current list of citations, and other product specific information.

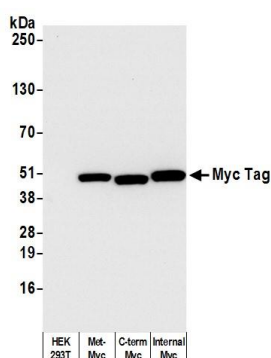
This document certifies that this product has met all of the quality control standards defined by Bethyl Laboratories, Inc.  
Eric McIntush, PhD | Chief Scientific Officer Date: September 20, 2019



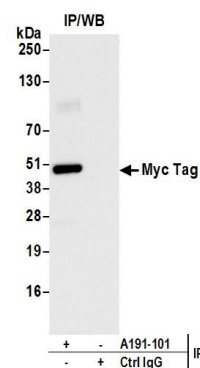
**Detection of Myc Tag in FFPE HEK293 cells expressing Myc-tagged nuclear protein by ICC.** *Antibody:* Rabbit anti-Myc Tag recombinant monoclonal antibody [BLRE01G] (A191-101 lot 1). *Secondary:* HRP-conjugated goat anti-rabbit IgG (A120-501P). *Substrate:* DAB.



**Detection of Myc Tag in FFPE HEK293 cells expressing Myc-tagged cytoplasmic protein by ICC.** *Antibody:* Rabbit anti-Myc Tag recombinant monoclonal antibody [BLRE01G] (A191-101 lot 1). *Secondary:* HRP-conjugated goat anti-rabbit IgG (A120-501P). *Substrate:* DAB.



**Detection of Myc-tagged protein by WB of lysate from non-transfected human HEK293 cells, HEK293 transfected with Met-Myc-IDO1, HEK293 transfected with IDO1-Myc (C-terminal Tag), and HEK293 transfected with IDO1-Myc-HIS (Internal Tag).** *Antibody:* Rabbit anti-Myc Tag recombinant monoclonal antibody [BLRE01G] (A191-101 lot 1) used at 1:1000. *Secondary:* HRP-conjugated goat anti-rabbit IgG (A120-101P). Chemiluminescence with an exposure time of 3 seconds.



**Detection of Myc Tag by western blot of immunoprecipitates from HEK293 transfected with Met-Myc-IDO1 lysate.** *Antibody:* Rabbit anti-Myc Tag recombinant monoclonal antibody [BLRE01G] (A191-101 lot 1) used for IP at 20  $\mu$ l/mg lysate. For blotting immunoprecipitated Myc Tag, A191-101 was used at 1:1000. Chemiluminescence with an exposure time of 1 seconds.