



SZABO SCANDIC

Part of Europa Biosite

Produktinformation



Forschungsprodukte & Biochemikalien



Zellkultur & Verbrauchsmaterial



Diagnostik & molekulare Diagnostik



Laborgeräte & Service

Weitere Information auf den folgenden Seiten!
See the following pages for more information!



Lieferung & Zahlungsart

siehe unsere [Liefer- und Versandbedingungen](#)

Zuschläge

- Mindermengenzuschlag
- Trockeneiszuschlag
- Gefahrgutzuschlag
- Expressversand

SZABO-SCANDIC HandelsgmbH

Quellenstraße 110, A-1100 Wien

T. +43(0)1 489 3961-0

F. +43(0)1 489 3961-7

mail@szabo-scandic.com

www.szabo-scandic.com

[linkedin.com/company/szaboscandic](https://www.linkedin.com/company/szaboscandic) 

HA Tag Recombinant Monoclonal Antibody [BLRE02G]

Rabbit Recombinant Monoclonal

Purified

Catalog No. A191-102

Lot No. A191-102-1



APPLICATIONS	WB, IP, ICC, ELISA
AMOUNT	100 µl (50+ tests)
CONCENTRATION	100 µg/ml
STORAGE/SHELF LIFE	2 – 8° C / 1 year from date of receipt
PHYSICAL STATE	Liquid
BUFFER	Borate Buffered Saline (BBS) pH 8.2 with 0.1% BSA and 0.09% Sodium Azide
ISOTYPE	IgG
CLONE #	BLRE02G
ORIGIN	USA
PRODUCTION PROCEDURES	Recombinant antibody was purified from cell culture supernatant.

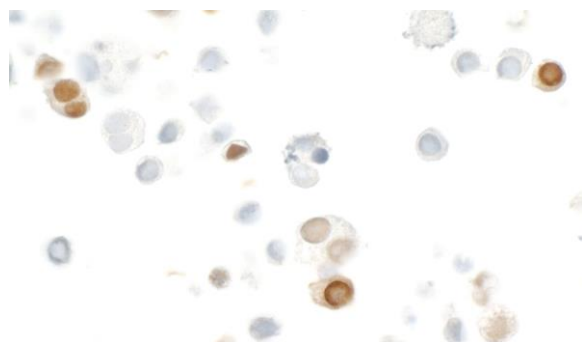
Immunogen was a peptide representing the HA Epitope tag (YPYDVPDYA).

APPLICATIONS Centrifuge tube to remove product from lid. Optimal working dilutions should be determined experimentally by the investigator. Prepare working dilution immediately before use.

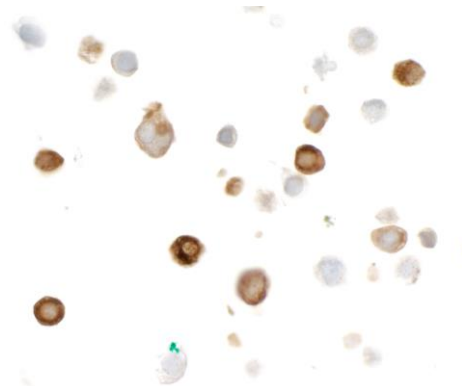
Western Blot	1:1,000
Immunoprecipitation	20 µl/1 mg lysate
Immunocytochemistry	1:100 to 1:500. Epitope retrieval with citrate buffer pH6.0 is recommended for FFPE cell sections.
ELISA	1:1,000 – 1:30,000; for coating plates 1:100 – 1:500

ADDITIONAL INFO <https://www.bethyl.com/product/A191-102>
Use the link above to view SDS, a current list of citations, and other product specific information.

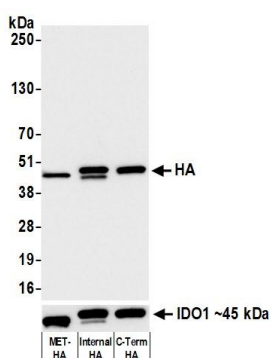
This document certifies that this product has met all of the quality control standards defined by Bethyl Laboratories, Inc.
Eric McIntush, PhD | Chief Scientific Officer Date: December 11, 2019



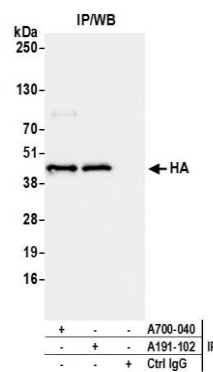
Detection of HA Tag in FFPE HEK293 cells expressing HA tagged nuclear protein by ICC. *Antibody:* Rabbit anti-HA Tag recombinant monoclonal antibody [BLRE02G] (A191-102 lot 1). *Secondary:* HRP-conjugated goat anti-rabbit IgG (A120-501P). *Substrate:* DAB.



Detection of HA Tag in FFPE HEK293 cells expressing HA tagged cytoplasmic protein by ICC. *Antibody:* Rabbit anti-HA Tag recombinant monoclonal antibody [BLRE02G] (A191-102 lot 1). *Secondary:* HRP-conjugated goat anti-rabbit IgG (A120-501P). *Substrate:* DAB.



Detection of HA-tagged protein by western blot of lysate from HEK293 transfected with Met-HA-IDO1, HEK293 transfected with IDO1-HA-V5 (Internal Tag), and HEK293 transfected with IDO1-V5-HA (C-terminal Tag) cells. *Antibody:* Rabbit anti-HA Tag recombinant monoclonal antibody [BLRE02G] (A191-102 lot 1) used at 1:1000. *Secondary:* HRP-conjugated goat anti-rabbit IgG (A120-101P). Chemiluminescence with an exposure time of 1 second. Lower Panel: Rabbit anti-IDO1 recombinant monoclonal antibody [BLR040F] (A700-040).



Detection of HA Tag by western blot of immunoprecipitates from HEK293 transfected with Met-HA-IDO1 lysate. *Antibody:* Rabbit anti-HA Tag recombinant monoclonal antibody [BLRE02G] (A191-102 lot 1) and Rabbit anti-IDO1 recombinant monoclonal antibody [BLR040F] (A700-040) used for IP at 20 µl/mg lysate. For blotting immunoprecipitated HA Tag, A191-102 was used at 1:1000. Chemiluminescence with an exposure time of 3 seconds.