



SZABO SCANDIC

Part of Europa Biosite

Produktinformation



Forschungsprodukte & Biochemikalien



Zellkultur & Verbrauchsmaterial



Diagnostik & molekulare Diagnostik



Laborgeräte & Service

Weitere Information auf den folgenden Seiten!
See the following pages for more information!



Lieferung & Zahlungsart

siehe unsere [Liefer- und Versandbedingungen](#)

Zuschläge

- Mindermengenzuschlag
- Trockeneiszuschlag
- Gefahrgutzuschlag
- Expressversand

SZABO-SCANDIC HandelsgmbH

Quellenstraße 110, A-1100 Wien

T. +43(0)1 489 3961-0

F. +43(0)1 489 3961-7

mail@szabo-scandic.com

www.szabo-scandic.com

[linkedin.com/company/szaboscandic](https://www.linkedin.com/company/szaboscandic) 

GFP Recombinant Monoclonal Antibody [BLRE04L]

Rabbit Recombinant Monoclonal

Purified

Catalog No. A191-104

Uniprot ID P42212

Lot No. 1

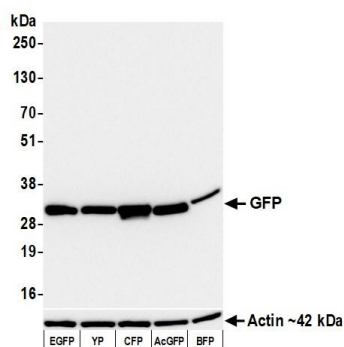
APPLICATIONS	WB, IP, ICC
AMOUNT	100 µl (50+ tests)
CONCENTRATION	50 µg/ml
STORAGE/SHELF LIFE	2 – 8°C / 1 year from date of receipt
PHYSICAL STATE	Liquid
BUFFER	Borate Buffered Saline (BBS) pH 8.2 with 0.1% BSA and 0.09% Sodium Azide
ISOTYPE	IgG
CLONE #	BLRE04L
ORIGIN	USA
PRODUCTION PROCEDURES	Recombinant antibody was purified from cell culture supernatant. Immunogen was a recombinant protein representing Green Fluorescent Protein (UniProt P42212).

APPLICATIONS Centrifuge tube to remove product from lid. Optimal working dilutions should be determined experimentally by the investigator. Prepare working dilution immediately before use.

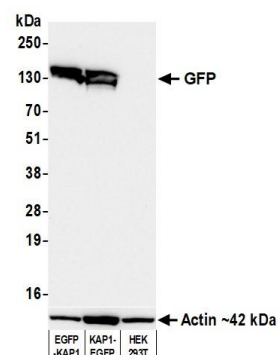
Western Blot	1:1,000
Immunoprecipitation	20 µl/1 mg lysate
Immunocytochemistry	1:100 to 1:500. Epitope retrieval with citrate buffer pH 6.0 is recommended for FFPE cell sections.

ADDITIONAL INFO <https://www.fortislife.com/p/A191-104>
Use the link above to view SDS, a current list of citations, and other product specific information.

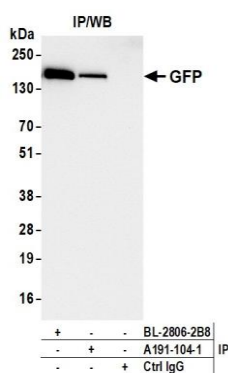
This document certifies that this product has met all of the quality control standards defined by Bethyl Laboratories, Inc.
Michael Spencer, PhD Date: June 29, 2023



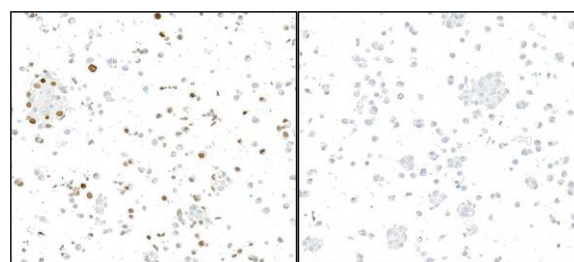
Detection of GFP by western blot. *Samples:* Whole cell lysate (5 µg) from 293T cells transfected with EGFP, YP, CFP, AcGFP, or BFP. *Antibody:* Rabbit anti-GFP recombinant monoclonal antibody [BLRE04L] (A191-104 lot 1) used at 1:1000. *Secondary:* HRP-conjugated goat anti-rabbit IgG (A120-101P). *Detection:* Chemiluminescence with an exposure time of 3 seconds. Lower Panel: Rabbit anti-Actin recombinant monoclonal antibody [BLR057F] (A700-057).



Detection of GFP by western blot. *Samples:* Whole cell lysate (10 µg) from HEK293T cells transfected with EGFP-KAP1, KAP1-EGFP, or untransfected. *Antibody:* Rabbit anti-GFP recombinant monoclonal antibody [BLRE04L] (A191-104 lot 1) used at 1:1000. *Secondary:* HRP-conjugated goat anti-rabbit IgG (A120-101P). *Detection:* Chemiluminescence with an exposure time of 10 seconds. Lower Panel: Rabbit anti-Actin recombinant monoclonal antibody [BLR057F] (A700-057).



Detection of GFP by western blot of immunoprecipitates. *Samples:* Whole cell lysate (1.0 mg per IP reaction; 20% of IP loaded) from 293-F cells transfected with EGFP-KAP1. *Antibodies:* Rabbit anti-GFP recombinant monoclonal antibody [BLRE04L] (A191-104 lot 1) used for IP at 20 µl/mg lysate. GFP was also immunoprecipitated by a second antibody against a different epitope of GFP (BL-2806-2B8). For blotting immunoprecipitated GFP, A191-104 was used at 1:1000. *Detection:* Chemiluminescence with an exposure time of 10 seconds.



Detection of GFP by immunocytochemistry. *Sample:* FFPE section of HEK293 cells expressing a GFP nuclear protein (left) and untransfected HEK293 cells (right). *Antibody:* Rabbit anti-GFP recombinant monoclonal antibody [BLRE04L] (A191-104). *Secondary:* HRP-conjugated goat anti-rabbit IgG (A120-501P).