



SZABO SCANDIC

Part of Europa Biosite

Produktinformation



Forschungsprodukte & Biochemikalien



Zellkultur & Verbrauchsmaterial



Diagnostik & molekulare Diagnostik



Laborgeräte & Service

Weitere Information auf den folgenden Seiten!
See the following pages for more information!



Lieferung & Zahlungsart

siehe unsere [Liefer- und Versandbedingungen](#)

Zuschläge

- Mindermengenzuschlag
- Trockeneiszuschlag
- Gefahrgutzuschlag
- Expressversand

SZABO-SCANDIC HandelsgmbH

Quellenstraße 110, A-1100 Wien

T. +43(0)1 489 3961-0

F. +43(0)1 489 3961-7

mail@szabo-scandic.com

www.szabo-scandic.com

[linkedin.com/company/szaboscandic](https://www.linkedin.com/company/szaboscandic) 

Phospho BRCA1 (S1280) Antibody

Rabbit Polyclonal

Antigen Affinity Purified	RefSeq ID	NP_009225.1
Catalog No. A300-004A-T	Uniprot ID	P38398
Lot No. 2	GeneID	672

APPLICATIONS	WB, IP
SPECIES REACTIVITY	Human
PRESUMED REACTIVITY	Based on 100% sequence identity, this antibody is predicted to react with Monkey and Chimpanzee
AMOUNT	10 µl
CONCENTRATION	1000 µg/ml
STORAGE/SHELF LIFE	2 – 8°C / 1 year from date of receipt
PHYSICAL STATE	Liquid
BUFFER	Tris-citrate/phosphate buffer, pH 7 to 8 containing 0.09% Sodium Azide
ISOTYPE	IgG
ORIGIN	USA
PRODUCTION PROCEDURES	Antibody was affinity purified using an epitope specific to Phospho BRCA1 (S1280) immobilized on solid support.

Immunogen for A300-004A was a phosphorylated synthetic peptide, which represented a portion of human Breast Cancer Gene 1 (GeneID 672) around serine 1280 according to the numbering given in entry NP_009225.1.

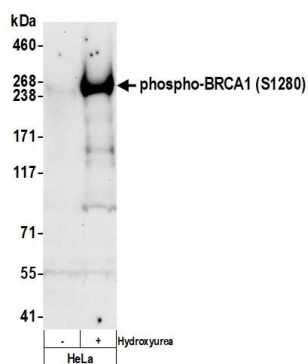
Immunoglobulin concentration was determined using Beer's Law where 1 mg/mL IgG has an A280 of 1.4.

APPLICATIONS Centrifuge tube to remove product from lid. Optimal working dilutions should be determined experimentally by the investigator. Prepare working dilution immediately before use.

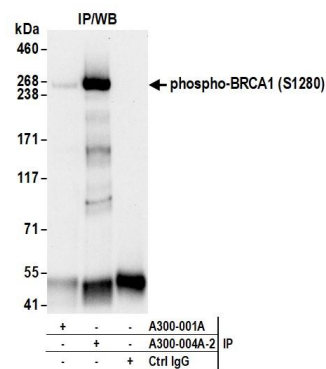
Western Blot 1:1000 – 1:10,000 (3–8% Tris-acetate gel recommended)
Immunoprecipitation 6 µg/mg lysate

ADDITIONAL INFO <https://www.fortislife.com/p/A300-004A-T>
Use the link above to view SDS, a current list of citations, and other product specific information.

This document certifies that this product has met all of the quality control standards defined by Bethyl Laboratories, Inc.
Michael Spencer, PhD Date: January 31, 2024



Detection of human phospho-BRCA1 (S1280) by western blot. *Samples:* Whole cell lysate (50 µg) from HeLa cells untreated (-) or treated (+) with Hydroxyurea. *Antibody:* Affinity purified rabbit anti-phospho-BRCA1 (S1280) antibody (A300-004A lot 2) used for WB at 1 µg/ml. *Detection:* Chemiluminescence with an exposure time of 3 minutes.



Detection of human phospho-BRCA1 (S1280) by western blot of immunoprecipitates. *Samples:* Whole cell lysate (1.0 mg per IP reaction; 20% of IP loaded) from HeLa cells treated with Hydroxyurea. *Antibodies:* Affinity purified rabbit anti-phospho-BRCA1 (S1280) antibody (A300-004A lot 2) used for IP at 6 µg per reaction. Phospho-BRCA1 (S1280) was also immunoprecipitated by a second phospho-BRCA1 antibody (A300-001A). For blotting immunoprecipitated phospho-BRCA1 (S1280), A300-004A was used at 1 µg/ml. *Detection:* Chemiluminescence with an exposure time of 30 seconds.