



# SZABO SCANDIC

Part of Europa Biosite

## Produktinformation



Forschungsprodukte & Biochemikalien



Zellkultur & Verbrauchsmaterial



Diagnostik & molekulare Diagnostik



Laborgeräte & Service

Weitere Information auf den folgenden Seiten!  
See the following pages for more information!



### Lieferung & Zahlungsart

siehe unsere [Liefer- und Versandbedingungen](#)

### Zuschläge

- Mindermengenzuschlag
- Trockeneiszuschlag
- Gefahrgutzuschlag
- Expressversand

### SZABO-SCANDIC HandelsgmbH

Quellenstraße 110, A-1100 Wien

T. +43(0)1 489 3961-0

F. +43(0)1 489 3961-7

[mail@szabo-scandic.com](mailto:mail@szabo-scandic.com)

[www.szabo-scandic.com](http://www.szabo-scandic.com)

[linkedin.com/company/szaboscandic](https://www.linkedin.com/company/szaboscandic) 

# GTF2I/TFII-I Antibody

Rabbit Polyclonal

Antigen Affinity Purified

Protein ID NP\_127492.1

Catalog No. A300-018A-T

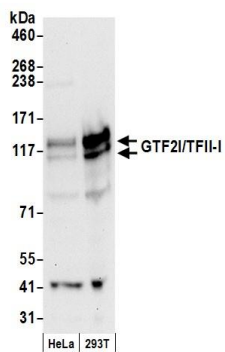
GeneID 2969

Lot No. A300-018A-T-1



<b>APPLICATIONS</b>	WB, IHC
<b>SPECIES REACTIVITY</b>	Human
<b>PRESUMED REACTIVITY</b>	Based on 100% sequence identity, this antibody is predicted to react with Rat
<b>AMOUNT</b>	20 µl (2 blots)
<b>CONCENTRATION</b>	100 µg/ml
<b>STORAGE/SHELF LIFE</b>	2 - 8° C / 1 year from date of receipt
<b>PHYSICAL STATE</b>	Liquid
<b>BUFFER</b>	Tris-buffered Saline containing 0.1% BSA and 0.09% Sodium Azide
<b>ISOTYPE</b>	IgG
<b>ORIGIN</b>	USA
<b>PRODUCTION PROCEDURES</b>	<p>Antibody was affinity purified using an epitope specific to GTF2I/TFII-I immobilized on solid support.</p> <p>The epitope recognized by A300-018A-T maps to a region between residue 950 and the C-terminus (residue 998) of human general transcription factor II-I using the numbering given in entry NP_127492.1 (GeneID 2969).</p> <p>Immunoglobulin concentration was determined by extinction coefficient: absorbance at 280 nm of 1.4 equals 1.0 mg of IgG.</p>
<b>APPLICATIONS</b>	<p>Centrifuge tube to remove product from lid. Optimal working dilutions should be determined experimentally by the investigator. Prepare working dilution immediately before use.</p> <p>Western Blot 1:1000</p> <p>Immunohistochemistry 1:100 - 1:500. Epitope retrieval with citrate buffer pH 6.0 is recommended for FFPE tissue sections.</p>
<b>APPLICATION NOTES</b>	Western blot of lysates performed using standard western blot reagents and 4-8% SDS-PAGE.
<b>ADDITIONAL INFO</b>	<p><a href="https://www.bethyl.com/product/A300-018A-T">https://www.bethyl.com/product/A300-018A-T</a></p> <p>Use the link above to view SDS, a current list of citations, and other product specific information.</p>

This document certifies that this product has met all of the quality control standards defined by Bethyl Laboratories, Inc.  
Eric McIntush, PhD | Chief Scientific Officer Date: June 21, 2019

**Detection of human GTF2I/TFII-I by western blot.**

*Samples:* Whole cell lysate (50 µg) from HeLa and HEK293T cells prepared using NETN lysis buffer. *Antibody:* Affinity purified rabbit anti-GTF2I/TFII-I antibody A300-018A-T (lot A300-018A-T-1) used at 1:1000. *Detection:* Chemiluminescence with an exposure time of 30 seconds.