



# SZABO SCANDIC

Part of Europa Biosite

## Produktinformation



Forschungsprodukte & Biochemikalien



Zellkultur & Verbrauchsmaterial



Diagnostik & molekulare Diagnostik



Laborgeräte & Service

Weitere Information auf den folgenden Seiten!  
See the following pages for more information!



### Lieferung & Zahlungsart

siehe unsere [Liefer- und Versandbedingungen](#)

### Zuschläge

- Mindermengenzuschlag
- Trockeneiszuschlag
- Gefahrgutzuschlag
- Expressversand

### SZABO-SCANDIC HandelsgmbH

Quellenstraße 110, A-1100 Wien

T. +43(0)1 489 3961-0

F. +43(0)1 489 3961-7

[mail@szabo-scandic.com](mailto:mail@szabo-scandic.com)

[www.szabo-scandic.com](http://www.szabo-scandic.com)

[linkedin.com/company/szaboscandic](https://www.linkedin.com/company/szaboscandic) 

# CSN1 Antibody

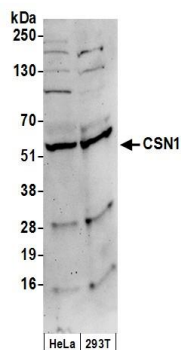
Rabbit Polyclonal

Antigen Affinity Purified      Protein ID    Q13098  
Catalog No.    A300-026A-T      GeneID      2873  
Lot No.        A300-026A-T-1



<b>APPLICATIONS</b>	WB, IHC
<b>SPECIES REACTIVITY</b>	Human
<b>PRESUMED REACTIVITY</b>	Based on 100% sequence identity, this antibody is predicted to react with Mouse and Rat
<b>AMOUNT</b>	20 µl (2 blots)
<b>CONCENTRATION</b>	100 µg/ml
<b>STORAGE/SHELF LIFE</b>	2 - 8° C / 1 year from date of receipt
<b>PHYSICAL STATE</b>	Liquid
<b>BUFFER</b>	Tris-buffered Saline containing 0.1% BSA and 0.09% Sodium Azide
<b>ISOTYPE</b>	IgG
<b>ORIGIN</b>	USA
<b>PRODUCTION PROCEDURES</b>	<p>Antibody was affinity purified using an epitope specific to CSN1 immobilized on solid support.</p> <p>The epitope recognized by A300-026A-T maps to a region between residue 400 and the C-terminus (residue 471) of human G protein Pathway Suppressor 1 using the numbering given in Swiss-Prot entry Q13098 (GeneID 2873).</p> <p>Immunoglobulin concentration was determined by extinction coefficient: absorbance at 280 nm of 1.4 equals 1.0 mg of IgG.</p>
<b>APPLICATIONS</b>	<p>Centrifuge tube to remove product from lid. Optimal working dilutions should be determined experimentally by the investigator. Prepare working dilution immediately before use.</p> <p>Western Blot                                      1:1000</p> <p>Immunohistochemistry    1:50 - 1:200. Epitope retrieval with citrate buffer pH 6.0 is recommended for FFPE tissue sections.</p>
<b>APPLICATION NOTES</b>	Western blot of lysates performed using standard western blot reagents and 4-20% SDS-PAGE.
<b>ADDITIONAL INFO</b>	<p><a href="https://www.bethyl.com/product/A300-026A-T">https://www.bethyl.com/product/A300-026A-T</a></p> <p>Use the link above to view SDS, a current list of citations, and other product specific information.</p>

This document certifies that this product has met all of the quality control standards defined by Bethyl Laboratories, Inc.  
Eric McIntush, PhD | Chief Scientific Officer      Date: June 21, 2019



**Detection of human CSN1 by western blot.** *Samples:* Whole cell lysate (50  $\mu$ g) from HeLa and HEK293T cells prepared using NETN lysis buffer. *Antibody:* Affinity purified rabbit anti-CSN1 antibody A300-026A-T (lot A300-026A-T-1) used at 1:1000. *Detection:* Chemiluminescence with an exposure time of 3 minutes.