



SZABO SCANDIC

Part of Europa Biosite

Produktinformation



Forschungsprodukte & Biochemikalien



Zellkultur & Verbrauchsmaterial



Diagnostik & molekulare Diagnostik



Laborgeräte & Service

Weitere Information auf den folgenden Seiten!
See the following pages for more information!



Lieferung & Zahlungsart

siehe unsere [Liefer- und Versandbedingungen](#)

Zuschläge

- Mindermengenzuschlag
- Trockeneiszuschlag
- Gefahrgutzuschlag
- Expressversand

SZABO-SCANDIC HandelsgmbH

Quellenstraße 110, A-1100 Wien

T. +43(0)1 489 3961-0

F. +43(0)1 489 3961-7

mail@szabo-scandic.com

www.szabo-scandic.com

[linkedin.com/company/szaboscandic](https://www.linkedin.com/company/szaboscandic) 

RFX5 Antibody

Rabbit Polyclonal

Antigen Affinity Purified	RefSeq ID	NP_000440.1
Catalog No. A300-030A-T	Uniprot ID	P48382
Lot No. 1	GeneID	5993

APPLICATIONS	WB, IP
SPECIES REACTIVITY	Human
AMOUNT	10 µl
CONCENTRATION	1000 µg/ml
STORAGE/SHELF LIFE	2 – 8°C / 1 year from date of receipt
PHYSICAL STATE	Liquid
BUFFER	Tris-citrate/phosphate buffer, pH 7 to 8 containing 0.09% Sodium Azide
ISOTYPE	IgG
ORIGIN	USA
PRODUCTION PROCEDURES	Antibody was affinity purified using an epitope specific to CSN3 immobilized on solid support.

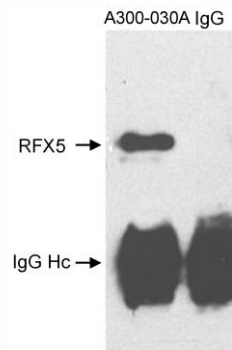
The epitope recognized by A300-030A maps to a region between residue 575 and the C-terminus (residue 616) of human Regulatory Factor X, 5 using the numbering given in entry NP_000440.1 (GeneID 5993).

Immunoglobulin concentration was determined using Beer's Law where 1 mg/mL IgG has an A280 of 1.4.

APPLICATIONS	Centrifuge tube to remove product from lid. Optimal working dilutions should be determined experimentally by the investigator. Prepare working dilution immediately before use.
	Western Blot 1:500 – 1:5000
	Immunoprecipitation 6 µg/mg lysate

ADDITIONAL INFO	https://www.fortislifecom.com/p/A300-030A-T Use the link above to view SDS, a current list of citations, and other product specific information.
------------------------	---

This document certifies that this product has met all of the quality control standards defined by Bethyl Laboratories, Inc.
Michael Spencer, PhD Date: January 31, 2024



Detection of human RFX5 by immunoprecipitation followed by western blot. *Sample:* Nuclear extract (50 μ g for WB, 1 mg for IP) from HeLa cells. *Antibody:* Affinity purified rabbit anti-RFX5 A300-030A used at 1 μ g/ml for WB and 4 μ g for IP. *Detection:* Chemiluminescence.