



# SZABO SCANDIC

Part of Europa Biosite

## Produktinformation



Forschungsprodukte & Biochemikalien



Zellkultur & Verbrauchsmaterial



Diagnostik & molekulare Diagnostik



Laborgeräte & Service

Weitere Information auf den folgenden Seiten!  
See the following pages for more information!



### Lieferung & Zahlungsart

siehe unsere [Liefer- und Versandbedingungen](#)

### Zuschläge

- Mindermengenzuschlag
- Trockeneiszuschlag
- Gefahrgutzuschlag
- Expressversand

### SZABO-SCANDIC HandelsgmbH

Quellenstraße 110, A-1100 Wien

T. +43(0)1 489 3961-0

F. +43(0)1 489 3961-7

[mail@szabo-scandic.com](mailto:mail@szabo-scandic.com)

[www.szabo-scandic.com](http://www.szabo-scandic.com)

[linkedin.com/company/szaboscandic](https://www.linkedin.com/company/szaboscandic) 

# ROCK2 Antibody

Rabbit Polyclonal

Antigen Affinity Purified

Protein ID NP\_004841.1

Catalog No. A300-047A

GeneID 9475

Lot No. A300-047A-1



<b>APPLICATIONS</b>	WB, IP
<b>SPECIES REACTIVITY</b>	Human
<b>PRESUMED REACTIVITY</b>	Based on 100% sequence identity, this antibody is predicted to react with Mouse, Rat and Bovine
<b>AMOUNT</b>	100 µl
<b>CONCENTRATION</b>	1000 µg/ml
<b>STORAGE/SHELF LIFE</b>	2 - 8° C / 1 year from date of receipt
<b>PHYSICAL STATE</b>	Liquid
<b>BUFFER</b>	Tris-citrate/phosphate buffer, pH 7 to 8 containing 0.09% Sodium Azide
<b>ISOTYPE</b>	IgG
<b>ORIGIN</b>	USA
<b>PRODUCTION PROCEDURES</b>	Antibody was affinity purified using an epitope specific to ROCK2 immobilized on solid support.

The epitope recognized by A300-047A maps to a region between residues 1320 and the C-terminus (residues 1388) of human ROCK2 using the number given in entry NP\_004841.1 (GeneID 9475)

Immunoglobulin concentration was determined by extinction coefficient: absorbance at 280 nm of 1.4 equals 1.0 mg of IgG.

**APPLICATIONS** Centrifuge tube to remove product from lid. Optimal working dilutions should be determined experimentally by the investigator. Prepare working dilution immediately before use.

Western Blot 1:10,000 - 1:25,000

Immunoprecipitation 2 - 5 µg/mg lysate

**APPLICATION NOTES** Western blot of immunoprecipitates performed using Normal Pig Serum (Cat. No. S100-020), Goat anti-Rabbit Light Chain HRP Conjugate (Cat. No. A120-113P) and 4-8% SDS-PAGE (link to IP-western blot protocol in Additional Info section below).

Western blot of lysates performed using standard western blot reagents and 4-8% SDS-PAGE.

## ADDITIONAL INFO

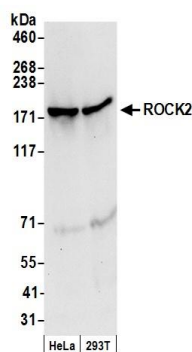
<https://www.bethyl.com/product/A300-047A>

Use the link above to view SDS, a current list of citations, and other product specific information.

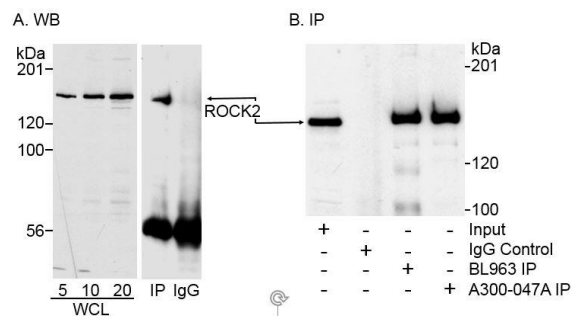
IP-western blot protocol: [https://www.bethyl.com/content/protocol\\_IP\\_WB](https://www.bethyl.com/content/protocol_IP_WB)

This document certifies that this product has met all of the quality control standards defined by Bethyl Laboratories, Inc.  
Eric McIntush, PhD | Chief Scientific Officer

Date: June 21, 2019



**Detection of human ROCK2 by western blot.** *Samples:* Whole cell lysate (50  $\mu$ g) from HeLa and HEK293T cells prepared using NETN lysis buffer. *Antibodies:* Affinity purified rabbit anti-ROCK2 antibody A300-047A (lot A300-047A-1) used for WB at 0.04  $\mu$ g/ml. *Detection:* Chemiluminescence with an exposure time of 10 seconds.



**Detection of human ROCK2 by western blot and immunoprecipitation.** *Samples:* Whole cell lysate (WCL) from HeLa cells. In A, ROCK2 from 5, 10 and 20  $\mu$ g of WCL or immunoprecipitated ROCK2 was detected. In B, ROCK2 was immunoprecipitated from 1 mg of WCL. *Antibodies:* A) Rabbit anti-ROCK2 antibody A300-047A was used at 0.06  $\mu$ g/ml to detect ROCK2 in WCL and ROCK2 immunoprecipitated using an antibody generated to a recombinant fragment of ROCK2. B) Rabbit anti-ROCK2 antibodies BL963 and A300-047A were used at 5  $\mu$ g/mg lysate to immunoprecipitate ROCK2, which was detected by western blot using an antibody generated to a recombinant fragment of ROCK2. *Detection:* Chemiluminescence with exposure times of 5 to 15 seconds.