



SZABO SCANDIC

Part of Europa Biosite

Produktinformation



Forschungsprodukte & Biochemikalien



Zellkultur & Verbrauchsmaterial



Diagnostik & molekulare Diagnostik



Laborgeräte & Service

Weitere Information auf den folgenden Seiten!
See the following pages for more information!



Lieferung & Zahlungsart

siehe unsere [Liefer- und Versandbedingungen](#)

Zuschläge

- Mindermengenzuschlag
- Trockeneiszuschlag
- Gefahrgutzuschlag
- Expressversand

SZABO-SCANDIC HandelsgmbH

Quellenstraße 110, A-1100 Wien

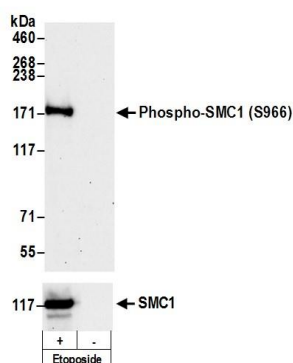
T. +43(0)1 489 3961-0

F. +43(0)1 489 3961-7

mail@szabo-scandic.com

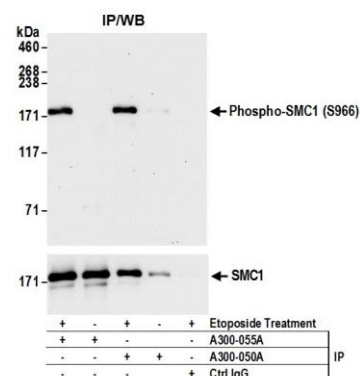
www.szabo-scandic.com

[linkedin.com/company/szaboscandic](https://www.linkedin.com/company/szaboscandic) 

**Detection of Phospho SMC1 (S966) by western blot.**

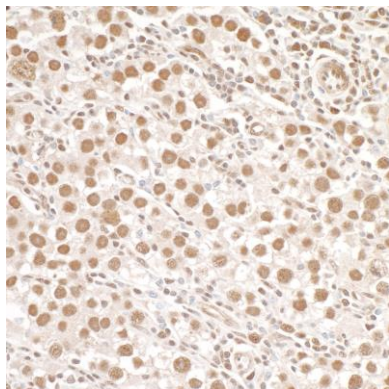
Samples: Whole cell lysate (50 μg) from Jurkat cells treated with 100 μM etoposide (+) or mock treated (-). *Antibodies:* Affinity purified rabbit anti-Phospho SMC1 (S966) antibody A300-050A (lot A300-050A-7) used at 0.1 μg/ml.

Detection: Chemiluminescence with an exposure time of 3 minutes. For detection of total SMC1, rabbit anti-SMC1 antibody A300-055A was used.

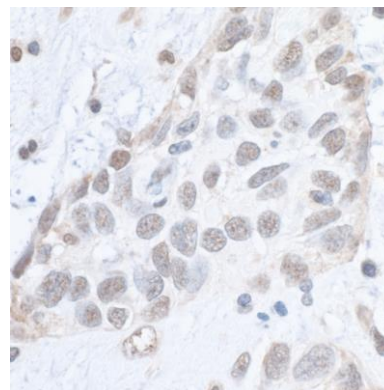
**Detection of human Phospho SMC1 (S966) by western blot of immunoprecipitates.**

Samples: Whole cell lysate (1.0 mg per IP reaction; 20% of IP loaded) from Jurkat cells treated with 100 μM etoposide (+) or mock treated (-).

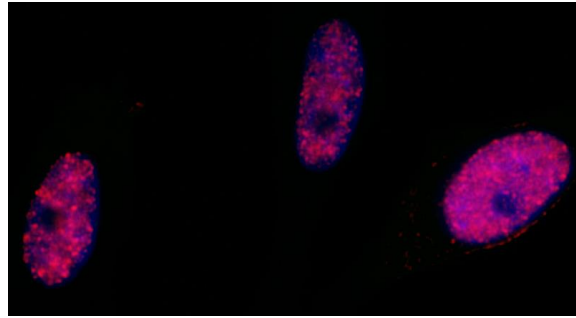
Antibodies: Rabbit anti-Phospho SMC1 (S966) antibody A300-050A (lot A300-050A-7) used for IP at 3 μl per reaction. Phospho SMC1 (S966) was also immunoprecipitated by rabbit anti-SMC1 antibody (A300-055A). For blotting immunoprecipitated Phospho SMC1 (S966), A300-050A was used at 1 μg/ml. *Detection:* Chemiluminescence with an exposure time of 3 minutes. For detection of total SMC1, rabbit anti-SMC1 antibody A300-055A was used.



Detection of human Phospho SMC1 (S966) by immunohistochemistry. *Sample:* FFPE section of human testicular seminoma. *Antibody:* Affinity purified rabbit anti- Phospho SMC1 (S966) (Cat. No. A300-050A Lot 7) used at a dilution of 1:1,000 (1 μg/ml). *Detection:* DAB



Detection of human Phospho SMC1 (S966) by immunohistochemistry. *Sample:* FFPE section of human breast carcinoma. *Antibody:* Affinity purified rabbit anti-Phospho SMC1 (S966) (Cat. No. A300-050A lot 7) used at a dilution of 1:1,000 (1 μg/ml). *Detection:* DAB



Detection of human Phospho SMC1 (S966) by immunocytochemistry. *Samples:* Neocarzinostatin treated asynchronous HeLa cells. *Antibody:* Affinity purified rabbit anti-Phospho SMC1 (S966) (Cat. No. A300-050 Lot 6) used at a dilution of 1:5,000 (0.2 µg/ml). *Detection:* Red fluorescent Anti-rabbit IgG-DyLight® 594 conjugated used at a dilution of 1:100.