



SZABO SCANDIC

Part of Europa Biosite

Produktinformation



Forschungsprodukte & Biochemikalien



Zellkultur & Verbrauchsmaterial



Diagnostik & molekulare Diagnostik



Laborgeräte & Service

Weitere Information auf den folgenden Seiten!
See the following pages for more information!



Lieferung & Zahlungsart

siehe unsere [Liefer- und Versandbedingungen](#)

Zuschläge

- Mindermengenzuschlag
- Trockeneiszuschlag
- Gefahrgutzuschlag
- Expressversand

SZABO-SCANDIC HandelsgmbH

Quellenstraße 110, A-1100 Wien

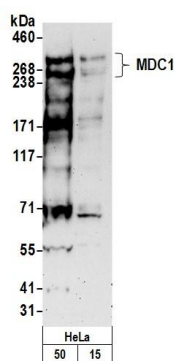
T. +43(0)1 489 3961-0

F. +43(0)1 489 3961-7

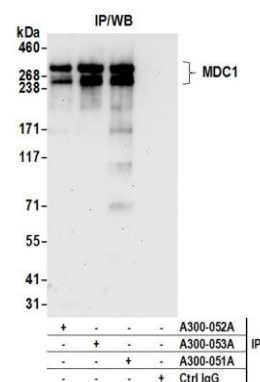
mail@szabo-scandic.com

www.szabo-scandic.com

[linkedin.com/company/szaboscandic](https://www.linkedin.com/company/szaboscandic) 



Detection of human MDC1 by western blot. *Samples:* Whole cell lysate (15 and 50 μ g) from HeLa cells prepared using NETN lysis buffer. *Antibody:* Affinity purified rabbit anti-MDC1 antibody A300-051A (lot A300-051A-3) used for WB at 0.1 μ g/ml. *Detection:* Chemiluminescence with an exposure time of 3 minutes.



Detection of human MDC1 by western blot of immunoprecipitates. *Samples:* Whole cell lysate (1.0 mg per IP reaction; 20% of IP loaded) from HeLa cells. *Antibodies:* Affinity purified rabbit anti-MDC1 antibody A300-051A (lot A300-051A-3) used for IP at 3 μ g per reaction. MDC1 was also immunoprecipitated by rabbit anti-MDC1 antibodies A300-052A and A300-053A. For blotting immunoprecipitated MDC1, A300-051A was used at 0.4 μ g/ml. *Detection:* Chemiluminescence with an exposure time of 30 seconds.