



SZABO SCANDIC

Part of Europa Biosite

Produktinformation



Forschungsprodukte & Biochemikalien



Zellkultur & Verbrauchsmaterial



Diagnostik & molekulare Diagnostik



Laborgeräte & Service

Weitere Information auf den folgenden Seiten!
See the following pages for more information!



Lieferung & Zahlungsart

siehe unsere [Liefer- und Versandbedingungen](#)

Zuschläge

- Mindermengenzuschlag
- Trockeneiszuschlag
- Gefahrgutzuschlag
- Expressversand

SZABO-SCANDIC HandelsgmbH

Quellenstraße 110, A-1100 Wien

T. +43(0)1 489 3961-0

F. +43(0)1 489 3961-7

mail@szabo-scandic.com

www.szabo-scandic.com

[linkedin.com/company/szaboscandic](https://www.linkedin.com/company/szaboscandic) 

MDC1 Antibody

Rabbit Polyclonal

Antigen Affinity Purified	RefSeq ID	NP_055456.1
Catalog No. A300-052A-T	Uniprot ID	Q14676
Lot No. 1	GeneID	9656

APPLICATIONS	WB, IP, IHC
SPECIES REACTIVITY	Human
AMOUNT	10 µl
CONCENTRATION	1000 µg/ml
STORAGE/SHELF LIFE	2 – 8°C / 1 year from date of receipt
PHYSICAL STATE	Liquid
BUFFER	Tris–citrate/phosphate buffer, pH 7 to 8 containing 0.09% Sodium Azide
ISOTYPE	IgG
ORIGIN	USA
PRODUCTION PROCEDURES	Antibody was affinity purified using an epitope specific to MDC1 immobilized on solid support.

The epitope recognized by A300-052A maps to a region between residues 925 and 975 of human Mediator of DNA Damage Checkpoint 1 using the numbering given in entry NP_055456.1 (GeneID 9656).

Immunoglobulin concentration was determined using Beer's Law where 1mg/mL IgG has an A280 of 1.4.

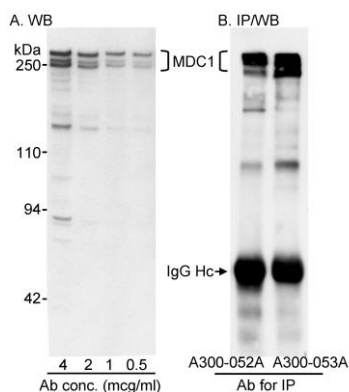
APPLICATIONS Centrifuge tube to remove product from lid. Optimal working dilutions should be determined experimentally by the investigator. Prepare working dilution immediately before use.

Western Blot	1:1000 – 1:10,000 (3–8% Tris–acetate gel recommended)
Immunoprecipitation	6 µg/mg lysate
Immunohistochemistry	1:500 – 1:2000. Epitope retrieval with citrate buffer pH 6.0 is recommended for FFPE tissue sections.

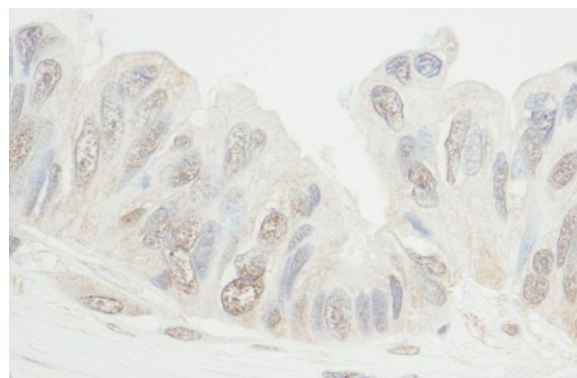
IHC HUMAN CONTROLS Laryngeal Squamous Cell Carcinoma, Metastatic Lymph Node, Ovarian Carcinoma

ADDITIONAL INFO <https://www.fortislife.com/p/A300-052A-T>
Use the link above to view SDS, a current list of citations, and other product specific information.

This document certifies that this product has met all of the quality control standards defined by Bethyl Laboratories, Inc.
Michael Spencer, PhD Date: January 31, 2024



Detection of human MDC1 by western blot and immunoprecipitation. *Samples:* A) Nuclear extract (50 μ g) from HeLa cells. B) Whole cell lysate from HEK 293 cells. *Antibodies:* A) Affinity purified rabbit anti-MDC1 antibody A300-052A used at the indicated concentrations for WB. B) Affinity purified rabbit anti-MDC1 antibodies A300-052A and A300-053A used at 3.3 μ g/mg lysate for IP followed by WB using A300-051A at 0.1 μ g/ml. *Detection:* Chemiluminescence with exposure times less than 5 min.



Detection of human MDC1 by immunohistochemistry. *Sample:* FFPE section of human ovarian carcinoma. *Antibody:* Affinity purified rabbit anti-MDC1 (Cat. No. A300-052A Lot1) used at a dilution of 1:1,000 (1 μ g/ml). *Detection:* DAB