



SZABO SCANDIC

Part of Europa Biosite

Produktinformation



Forschungsprodukte & Biochemikalien



Zellkultur & Verbrauchsmaterial



Diagnostik & molekulare Diagnostik



Laborgeräte & Service

Weitere Information auf den folgenden Seiten!
See the following pages for more information!



Lieferung & Zahlungsart

siehe unsere [Liefer- und Versandbedingungen](#)

Zuschläge

- Mindermengenzuschlag
- Trockeneiszuschlag
- Gefahrgutzuschlag
- Expressversand

SZABO-SCANDIC HandelsgmbH

Quellenstraße 110, A-1100 Wien

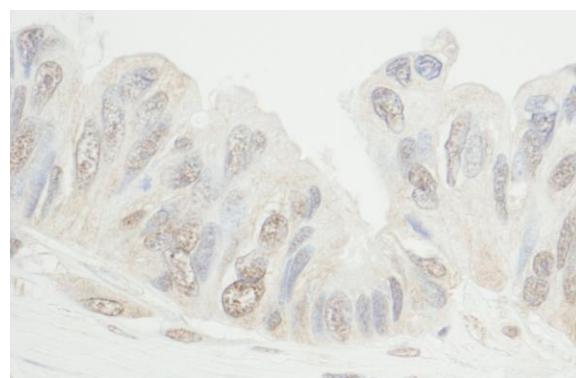
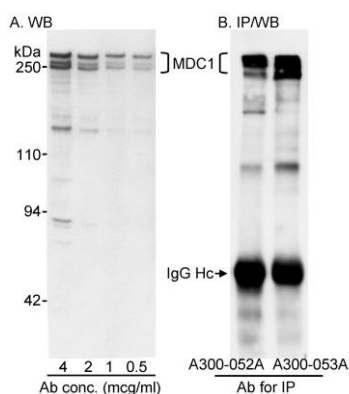
T. +43(0)1 489 3961-0

F. +43(0)1 489 3961-7

mail@szabo-scandic.com

www.szabo-scandic.com

[linkedin.com/company/szaboscandic](https://www.linkedin.com/company/szaboscandic) 



Detection of human MDC1 by western blot and Immunoprecipitation. *Samples:* A) Nuclear extract (50 μ g) from HeLa cells. B) Whole cell lysate from HEK 293 cells. *Antibodies:* A) Affinity purified rabbit anti-MDC1 antibody A300-052A used at the indicated concentrations for WB. B) Affinity purified rabbit anti-MDC1 antibodies A300-052A and A300-053A used at 3.3 μ g/mg lysate for IP followed by WB using A300-051A at 0.1 μ g/ml. *Detection:* Chemiluminescence with exposure times less than 5 min.

Detection of human MDC1 by immunohistochemistry. *Sample:* FFPE section of human ovarian carcinoma. *Antibody:* Affinity purified rabbit anti-MDC1 (Cat. No. A300-052A Lot1) used at a dilution of 1:1,000 (1 μ g/ml). *Detection:* DAB