



# SZABO SCANDIC

Part of Europa Biosite

## Produktinformation



Forschungsprodukte & Biochemikalien



Zellkultur & Verbrauchsmaterial



Diagnostik & molekulare Diagnostik



Laborgeräte & Service

Weitere Information auf den folgenden Seiten!  
See the following pages for more information!



### Lieferung & Zahlungsart

siehe unsere [Liefer- und Versandbedingungen](#)

### Zuschläge

- Mindermengenzuschlag
- Trockeneiszuschlag
- Gefahrgutzuschlag
- Expressversand

### SZABO-SCANDIC HandelsgmbH

Quellenstraße 110, A-1100 Wien

T. +43(0)1 489 3961-0

F. +43(0)1 489 3961-7

[mail@szabo-scandic.com](mailto:mail@szabo-scandic.com)

[www.szabo-scandic.com](http://www.szabo-scandic.com)

[linkedin.com/company/szaboscandic](https://www.linkedin.com/company/szaboscandic) 

# Topo II Alpha Antibody

Rabbit Polyclonal

Antigen Affinity Purified	RefSeq ID	NP_001058.2
Catalog No. A300-054A-T	Uniprot ID	P11388
Lot No. 3	GeneID	7153

---

<b>APPLICATIONS</b>	WB, IP, IHC
<b>SPECIES REACTIVITY</b>	Human
<b>AMOUNT</b>	10 µl
<b>CONCENTRATION</b>	1000 µg/ml
<b>STORAGE/SHELF LIFE</b>	2 – 8°C / 1 year from date of receipt
<b>PHYSICAL STATE</b>	Liquid
<b>BUFFER</b>	Tris-citrate/phosphate buffer, pH 7 to 8 containing 0.09% Sodium Azide
<b>ISOTYPE</b>	IgG
<b>ORIGIN</b>	USA
<b>PRODUCTION PROCEDURES</b>	Antibody was affinity purified using an epitope specific to Topo II Alpha immobilized on solid support.

The epitope recognized by A300-054A maps to a region between residue 1500 and the C-terminus (residue 1531) of human Topoisomerase (DNA) II Alpha using the numbering given in entry NP\_001058.2 (GeneID 7153).

Immunoglobulin concentration was determined using Beer's Law where 1mg/mL IgG has an A280 of 1.4.

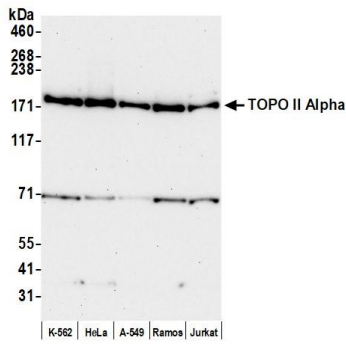
**APPLICATIONS** Centrifuge tube to remove product from lid. Optimal working dilutions should be determined experimentally by the investigator. Prepare working dilution immediately before use.

Western Blot	1:10,000 – 1:30,000
Immunoprecipitation	6 µg/mg lysate
Immunohistochemistry	1:500 – 1:2000. Epitope retrieval with citrate buffer pH 6.0 is recommended for FFPE tissue sections.

**IHC HUMAN CONTROLS** Laryngeal Squamous Cell Carcinoma, Stomach Adenocarcinoma

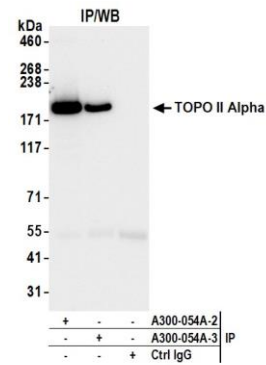
**ADDITIONAL INFO** <https://www.fortislife.com/p/A300-054A-T>  
Use the link above to view SDS, a current list of citations, and other product specific information.

This document certifies that this product has met all of the quality control standards defined by Bethyl Laboratories, Inc.  
Michael Spencer, PhD Date: February 26, 2024



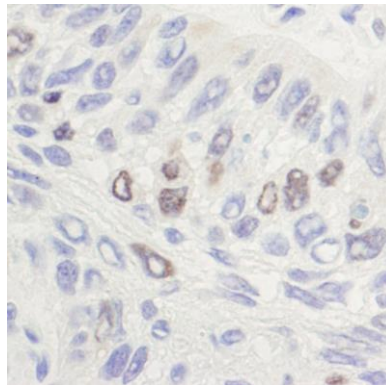
**Detection of human TOPO II Alpha by western blot.**

*Samples:* Whole cell lysate (10 µg) from K-562, HeLa, A-549, Ramos, and Jurkat cells prepared using NETN lysis buffer. *Antibody:* Affinity purified rabbit anti-TOPO II Alpha antibody (A300-054A lot 3) used for WB at 0.04 µg/ml. *Detection:* Chemiluminescence with an exposure time of 3 minutes.



**Detection of human TOPO II Alpha by western blot of immunoprecipitates.**

*Samples:* Whole cell lysate (1.0 mg per IP reaction; 20% of IP loaded) from K-562 cells prepared using NETN lysis buffer. *Antibodies:* Affinity purified rabbit anti-TOPO II Alpha antibody (A300-054A lot 3) used for IP at 6 µg per reaction. TOPO II Alpha was also immunoprecipitated by a previous lot of this antibody (A300-054A lot 2). For blotting immunoprecipitated TOPO II Alpha, A300-054A was used at 0.04 µg/ml. *Detection:* Chemiluminescence with an exposure time of 10 seconds.



**Detection of human Topo II Alpha by immunohistochemistry.**

*Sample:* FFPE section of human laryngeal squamous cell carcinoma. *Antibody:* Affinity purified rabbit anti-Topo II alpha (A300-054A) used at a dilution of 1:1,000 (1 µg/ml). *Detection:* DAB