



SZABO SCANDIC

Part of Europa Biosite

Produktinformation



Forschungsprodukte & Biochemikalien



Zellkultur & Verbrauchsmaterial



Diagnostik & molekulare Diagnostik



Laborgeräte & Service

Weitere Information auf den folgenden Seiten!
See the following pages for more information!



Lieferung & Zahlungsart

siehe unsere [Liefer- und Versandbedingungen](#)

Zuschläge

- Mindermengenzuschlag
- Trockeneiszuschlag
- Gefahrgutzuschlag
- Expressversand

SZABO-SCANDIC HandelsgmbH

Quellenstraße 110, A-1100 Wien

T. +43(0)1 489 3961-0

F. +43(0)1 489 3961-7

mail@szabo-scandic.com

www.szabo-scandic.com

[linkedin.com/company/szaboscandic](https://www.linkedin.com/company/szaboscandic) 

Topo II Alpha Antibody

Rabbit Polyclonal

Antigen Affinity Purified Protein ID NP_001058.2
Catalog No. A300-054A GeneID 7153
Lot No. A300-054A-2



APPLICATIONS	WB, IP, IHC
SPECIES REACTIVITY	Human
AMOUNT	100 µl
CONCENTRATION	1000 µg/ml
STORAGE/SHELF LIFE	2 – 8° C / 1 year from date of receipt
PHYSICAL STATE	Liquid
BUFFER	Tris-citrate/phosphate buffer, pH 7 to 8 containing 0.09% Sodium Azide
ISOTYPE	IgG
ORIGIN	USA
PRODUCTION PROCEDURES	Antibody was affinity purified using an epitope specific to Topo II Alpha immobilized on solid support.

The epitope recognized by A300-054A maps to a region between residue 1500 and the C-terminus (residue 1531) of human Topoisomerase (DNA) II Alpha using the numbering given in entry NP_001058.2 (GeneID 7153).

Immunoglobulin concentration was determined by extinction coefficient: absorbance at 280 nm of 1.4 equals 1.0 mg of IgG.

APPLICATIONS Centrifuge tube to remove product from lid. Optimal working dilutions should be determined experimentally by the investigator. Prepare working dilution immediately before use.

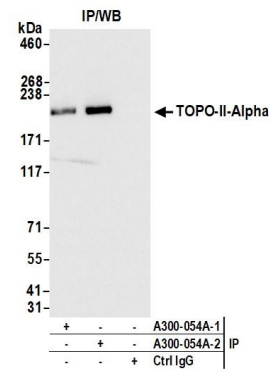
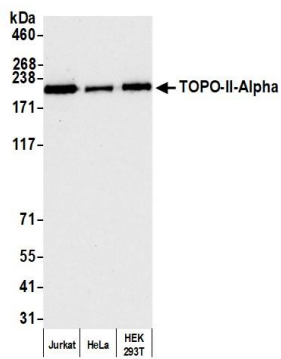
Western Blot	1:10,000 – 1:30,000
Immunoprecipitation	2 – 10 µg/mg lysate
Immunohistochemistry	1:500 – 1:2,000. Epitope retrieval with citrate buffer pH 6.0 is recommended for FFPE tissue sections.

APPLICATION NOTES Western blot of immunoprecipitates performed using Normal Pig Serum (Cat. No. S100-020), Goat anti-Rabbit Light Chain HRP Conjugate (Cat. No. A120-113P) and 4-8% SDS-PAGE (link to IP-western blot protocol in Additional Info section below).

IHC HUMAN CONTROLS Western blot of lysates performed using standard western blot reagents and 4-8% SDS-PAGE. Laryngeal Squamous Cell Carcinoma, Stomach Adenocarcinoma

ADDITIONAL INFO <https://www.bethyl.com/product/A300-054A>
Use the link above to view SDS, a current list of citations, and other product specific information.
IP-western blot protocol: https://www.bethyl.com/content/protocol_IP_WB

This document certifies that this product has met all of the quality control standards defined by Bethyl Laboratories, Inc.
Eric McIntush, PhD | Chief Scientific Officer Date: February 21, 2020

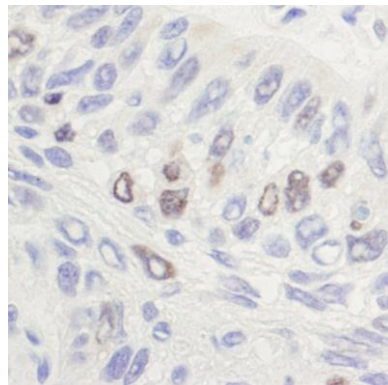


Detection of human TOPO-II-Alpha by western blot.

Samples: Whole cell lysate (25 µg) from Jurkat, HeLa, and HEK293T cells prepared using NETN lysis buffer. *Antibody:* Affinity purified rabbit anti-TOPO-II-Alpha antibody A300-054A (lot A300-054A-2) used for WB at 0.04 µg/ml. *Detection:* Chemiluminescence with an exposure time of 10 seconds.

Detection of human TOPO-II-Alpha by western blot of immunoprecipitates.

Samples: Whole cell lysate (1.0 mg per IP reaction; 20% of IP loaded) from Jurkat cells prepared using NETN lysis buffer. *Antibodies:* Affinity purified rabbit anti-TOPO-II-Alpha antibody A300-054A (lot A300-054A-2) used for IP at 6 µg per reaction. TOPO-II-Alpha was also immunoprecipitated by a previous lot of this antibody (lot A300-054A-1). For blotting immunoprecipitated TOPO-II-Alpha, A300-054A was used at 0.04 µg/ml. *Detection:* Chemiluminescence with an exposure time of 1 second.



Detection of human Topo II Alpha by immunohistochemistry.

Sample: FFPE section of human laryngeal squamous cell carcinoma. *Antibody:* Affinity purified rabbit anti-Topo II alpha (Cat. No. A300-054A lot 1) used at a dilution of 1:1,000 (1 µg/ml). *Detection:* DAB