



SZABO SCANDIC

Part of Europa Biosite

Produktinformation



Forschungsprodukte & Biochemikalien



Zellkultur & Verbrauchsmaterial



Diagnostik & molekulare Diagnostik



Laborgeräte & Service

Weitere Information auf den folgenden Seiten!
See the following pages for more information!



Lieferung & Zahlungsart

siehe unsere [Liefer- und Versandbedingungen](#)

Zuschläge

- Mindermengenzuschlag
- Trockeneiszuschlag
- Gefahrgutzuschlag
- Expressversand

SZABO-SCANDIC HandelsgmbH

Quellenstraße 110, A-1100 Wien

T. +43(0)1 489 3961-0

F. +43(0)1 489 3961-7

mail@szabo-scandic.com

www.szabo-scandic.com

[linkedin.com/company/szaboscandic](https://www.linkedin.com/company/szaboscandic) 

SMC2 Antibody

Rabbit Polyclonal

Antigen Affinity Purified

Protein ID NP_006435.1

Catalog No. A300-058A-T

GeneID 10592

Lot No. A300-058A-T-3



APPLICATIONS	WB, IP, ICC
SPECIES REACTIVITY	Human
AMOUNT	20 µl (2 blots)
CONCENTRATION	100 µg/ml
STORAGE/SHELF LIFE	2 - 8° C / 1 year from date of receipt
PHYSICAL STATE	Liquid
BUFFER	Tris-buffered Saline containing 0.1% BSA and 0.09% Sodium Azide
ISOTYPE	IgG
ORIGIN	USA
PRODUCTION PROCEDURES	Antibody was affinity purified using an epitope specific to SMC2 immobilized on solid support.

The epitope recognized by A300-058A-T maps to a region between residue 1150 and the C-terminus (residue 1197) of human Structural Maintenance of Chromosomes 2 using the numbering given in entry NP_006435.1 (GeneID 10592).

Immunoglobulin concentration was determined by extinction coefficient: absorbance at 280 nm of 1.4 equals 1.0 mg of IgG.

APPLICATIONS Centrifuge tube to remove product from lid. Optimal working dilutions should be determined experimentally by the investigator. Prepare working dilution immediately before use.

Western Blot 1:1000

Immunoprecipitation The antibody contained within A300-058A-T has been qualified for use in immunoprecipitation; however, we recommend using the alternative formulation of this antibody found as product A300-058A.

Immunocytochemistry 1:20 - 1:40

APPLICATION NOTES Western blot of immunoprecipitates performed using Normal Pig Serum (Cat. No. S100-020), Goat anti-Rabbit Light Chain HRP Conjugate (Cat. No. A120-113P) and 4-8% SDS-PAGE (link to IP-western blot protocol in Additional Info section below).

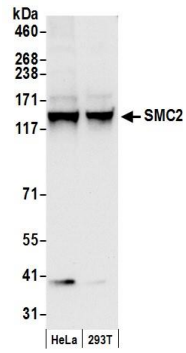
Western blot of lysates performed using standard western blot reagents and 4-8% SDS-PAGE.

ADDITIONAL INFO <https://www.bethyl.com/product/A300-058A-T>

Use the link above to view SDS, a current list of citations, and other product specific information.

IP-western blot protocol: https://www.bethyl.com/content/protocol_IP_WB

This document certifies that this product has met all of the quality control standards defined by Bethyl Laboratories, Inc.
Eric McIntush, PhD | Chief Scientific Officer Date: June 21, 2019



Detection of human SMC2 by western blot. *Samples:* Whole cell lysate (50 μ g) from HeLa and HEK293T cells prepared using NETN lysis buffer. *Antibody:* Affinity purified rabbit anti-SMC2 antibody A300-058A-T (lot A300-058A-T-3) used for WB at 1:1000. *Detection:* Chemiluminescence with an exposure time of 3 seconds.