



# SZABO SCANDIC

Part of Europa Biosite

## Produktinformation



Forschungsprodukte & Biochemikalien



Zellkultur & Verbrauchsmaterial



Diagnostik & molekulare Diagnostik



Laborgeräte & Service

Weitere Information auf den folgenden Seiten!  
See the following pages for more information!



### Lieferung & Zahlungsart

siehe unsere [Liefer- und Versandbedingungen](#)

### Zuschläge

- Mindermengenzuschlag
- Trockeneiszuschlag
- Gefahrgutzuschlag
- Expressversand

### SZABO-SCANDIC HandelsgmbH

Quellenstraße 110, A-1100 Wien

T. +43(0)1 489 3961-0

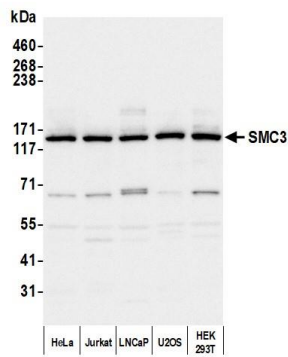
F. +43(0)1 489 3961-7

[mail@szabo-scandic.com](mailto:mail@szabo-scandic.com)

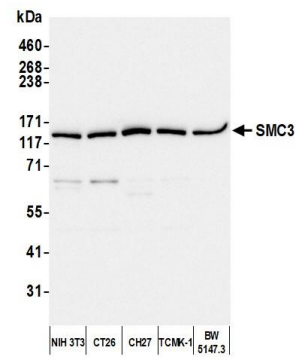
[www.szabo-scandic.com](http://www.szabo-scandic.com)

[linkedin.com/company/szaboscandic](https://www.linkedin.com/company/szaboscandic) 

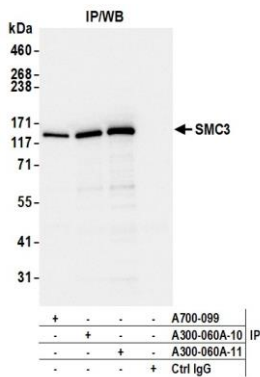




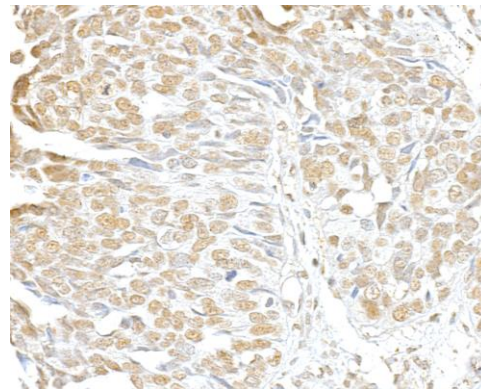
**Detection of human SMC3 by western blot.** *Samples:* Whole cell lysate (10 µg) from HeLa, Jurkat, LNCaP, U2OS, and HEK293T cells prepared using NETN lysis buffer. *Antibody:* Affinity purified rabbit anti-SMC3 antibody (A300-060A lot 11) used for WB at 0.04 µg/ml. *Detection:* Chemiluminescence with an exposure time of 3 seconds.



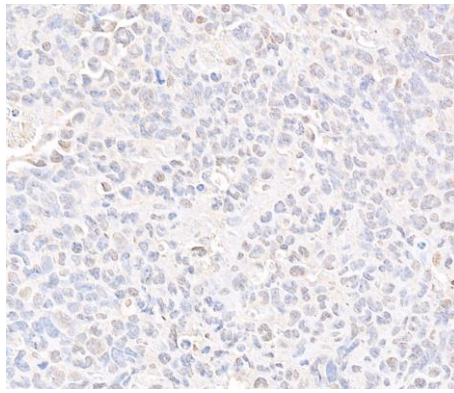
**Detection of mouse SMC3 by western blot.** *Samples:* Whole cell lysate (10 µg) from NIH 3T3, CT26, CH27, TCMK-1, and BW5147.3 cells prepared using NETN lysis buffer. *Antibody:* Affinity purified rabbit anti-SMC3 antibody (A300-060A lot 11) used for WB at 0.04 µg/ml. *Detection:* Chemiluminescence with an exposure time of 3 seconds.



**Detection of human SMC3 by western blot of immunoprecipitates.** *Samples:* Whole cell lysate (1.0 mg per IP reaction; 5% of IP loaded) from HEK293T cells prepared using NETN lysis buffer. *Antibodies:* Affinity purified rabbit anti-SMC3 antibody (A300-060A lot 11) used for IP at 6 µg per reaction. SMC3 was also immunoprecipitated by a previous lot of this antibody (A300-060A lot 10) and a second antibody against SMC3 [BLR099G] (A700-099). For blotting immunoprecipitated SMC3, A300-060A was used at 0.04 µg/ml. *Detection:* Chemiluminescence with an exposure time of 1 second.



**Detection of human SMC3 by immunohistochemistry.** *Sample:* FFPE section of human ovarian carcinoma. *Antibody:* Affinity purified rabbit anti-SMC3 (A300-060A lot 11) used at 1:5,000 (0.2µg/ml). *Detection:* DAB



**Detection of mouse SMC3 by immunohistochemistry.**

*Sample:* FFPE section of mouse renal cell carcinoma.

*Antibody:* Affinity purified rabbit anti-SMC3 (A300-060A lot 11) used at 1:5,000 (0.2µg/ml). *Detection:* DAB