



SZABO SCANDIC

Part of Europa Biosite

Produktinformation



Forschungsprodukte & Biochemikalien



Zellkultur & Verbrauchsmaterial



Diagnostik & molekulare Diagnostik



Laborgeräte & Service

Weitere Information auf den folgenden Seiten!
See the following pages for more information!



Lieferung & Zahlungsart

siehe unsere [Liefer- und Versandbedingungen](#)

Zuschläge

- Mindermengenzuschlag
- Trockeneiszuschlag
- Gefahrgutzuschlag
- Expressversand

SZABO-SCANDIC HandelsgmbH

Quellenstraße 110, A-1100 Wien

T. +43(0)1 489 3961-0

F. +43(0)1 489 3961-7

mail@szabo-scandic.com

www.szabo-scandic.com

[linkedin.com/company/szaboscandic](https://www.linkedin.com/company/szaboscandic) 

SMC3 Antibody

Rabbit Polyclonal

Antigen Affinity Purified	RefSeq ID	NP_005436.1
Catalog No. A300-060A	Uniprot ID	Q9UQE7
Lot No. A300-060A-11	GeneID	9126

APPLICATIONS	WB, IP, IHC
SPECIES REACTIVITY	Human, Mouse
PRESUMED REACTIVITY	Based on 100% sequence identity, this antibody is predicted to react with Bovine and Orangutan
AMOUNT	100 µl
CONCENTRATION	1000 µg/ml
STORAGE/SHELF LIFE	2 – 8°C / 1 year from date of receipt
PHYSICAL STATE	Liquid
BUFFER	Tris-citrate/phosphate buffer, pH 7 to 8 containing 0.09% Sodium Azide
ISOTYPE	IgG
ORIGIN	USA
PRODUCTION PROCEDURES	Antibody was affinity purified using an epitope specific to SMC3 immobilized on solid support.

The epitope recognized by A300-060A maps to a region between residue 1175 and the C-terminus (residue 1217) of human Structural Maintenance of Chromosomes 3 using the numbering given in entry NP_005436.1 (GeneID 9126).

Immunoglobulin concentration was determined by extinction coefficient: absorbance at 280 nm of 1.4 equals 1.0 mg of IgG.

APPLICATIONS Centrifuge tube to remove product from lid. Optimal working dilutions should be determined experimentally by the investigator. Prepare working dilution immediately before use.

Western Blot 1:10,000 – 1:25,000

Immunoprecipitation 2 – 10 µg/mg lysate

Immunohistochemistry 1:1,000 to 1:5,000. Epitope retrieval with citrate buffer pH6.0 is recommended for FFPE tissue sections.

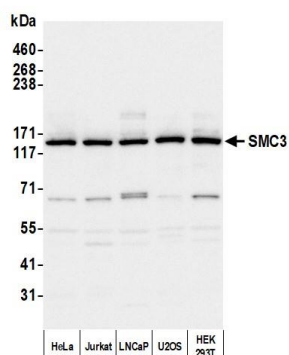
IHC HUMAN CONTROLS Breast Carcinoma, Ovarian Carcinoma, Testicular Seminoma

IHC MOUSE CONTROLS Plasmacytoma, Renal Cell Carcinoma

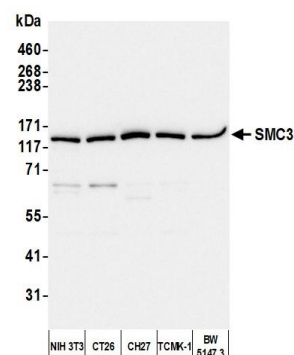
ADDITIONAL INFO <https://www.fortislifesciences.com/p/A300-060A>

Use the link above to view SDS, a current list of citations, and other product specific information.

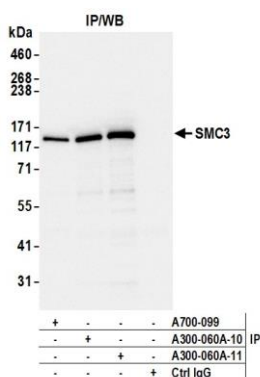
This document certifies that this product has met all of the quality control standards defined by Bethyl Laboratories, Inc.
Michael Spencer, PhD Date: March 16, 2023



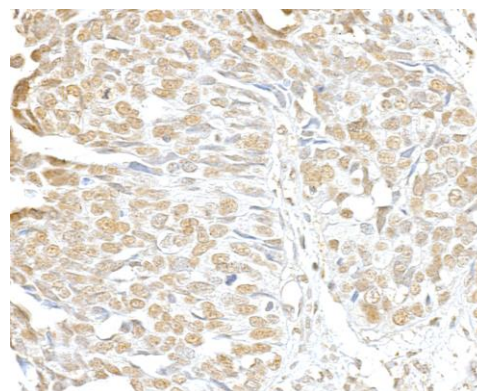
Detection of human SMC3 by western blot. *Samples:* Whole cell lysate (10 μ g) from HeLa, Jurkat, LNCaP, U2OS, and HEK293T cells prepared using NETN lysis buffer. *Antibody:* Affinity purified rabbit anti-SMC3 antibody (A300-060A lot 11) used for WB at 0.04 μ g/ml. *Detection:* Chemiluminescence with an exposure time of 3 seconds.



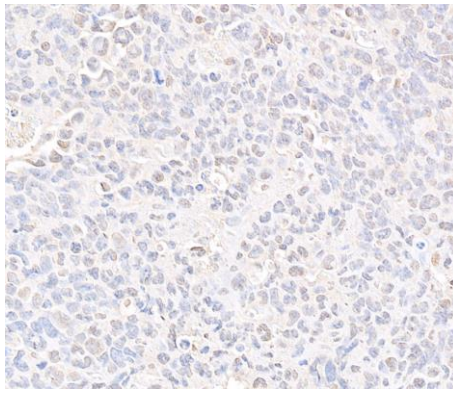
Detection of mouse SMC3 by western blot. *Samples:* Whole cell lysate (10 μ g) from NIH 3T3, CT26, CH27, TCMK-1, and BW5147.3 cells prepared using NETN lysis buffer. *Antibody:* Affinity purified rabbit anti-SMC3 antibody (A300-060A lot 11) used for WB at 0.04 μ g/ml. *Detection:* Chemiluminescence with an exposure time of 3 seconds.



Detection of human SMC3 by western blot of immunoprecipitates. *Samples:* Whole cell lysate (1.0 mg per IP reaction; 5% of IP loaded) from HEK293T cells prepared using NETN lysis buffer. *Antibodies:* Affinity purified rabbit anti-SMC3 antibody (A300-060A lot 11) used for IP at 6 μ g per reaction. SMC3 was also immunoprecipitated by a previous lot of this antibody (A300-060A lot 10) and a second antibody against SMC3 [BLR099G] (A700-099). For blotting immunoprecipitated SMC3, A300-060A was used at 0.04 μ g/ml. *Detection:* Chemiluminescence with an exposure time of 1 second.



Detection of human SMC3 by immunohistochemistry. *Sample:* FFPE section of human ovarian carcinoma. *Antibody:* Affinity purified rabbit anti-SMC3 (A300-060A lot 11) used at 1:5,000 (0.2 μ g/ml). *Detection:* DAB



Detection of mouse SMC3 by immunohistochemistry.

Sample: FFPE section of mouse renal cell carcinoma.

Antibody: Affinity purified rabbit anti-SMC3 (A300-060A lot 11) used at 1:5,000 (0.2µg/ml). *Detection:* DAB