



# SZABO SCANDIC

Part of Europa Biosite

## Produktinformation



Forschungsprodukte & Biochemikalien



Zellkultur & Verbrauchsmaterial



Diagnostik & molekulare Diagnostik



Laborgeräte & Service

Weitere Information auf den folgenden Seiten!  
See the following pages for more information!



### Lieferung & Zahlungsart

siehe unsere [Liefer- und Versandbedingungen](#)

### Zuschläge

- Mindermengenzuschlag
- Trockeneiszuschlag
- Gefahrgutzuschlag
- Expressversand

### SZABO-SCANDIC HandelsgmbH

Quellenstraße 110, A-1100 Wien

T. +43(0)1 489 3961-0

F. +43(0)1 489 3961-7

[mail@szabo-scandic.com](mailto:mail@szabo-scandic.com)

[www.szabo-scandic.com](http://www.szabo-scandic.com)

[linkedin.com/company/szaboscandic](https://www.linkedin.com/company/szaboscandic) 

# SMC4 Antibody

Rabbit Polyclonal

Antigen Affinity Purified

Protein ID NP\_005487.2

Catalog No. A300-063A

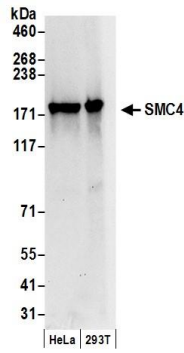
GeneID 10051

Lot No. A300-063A-2

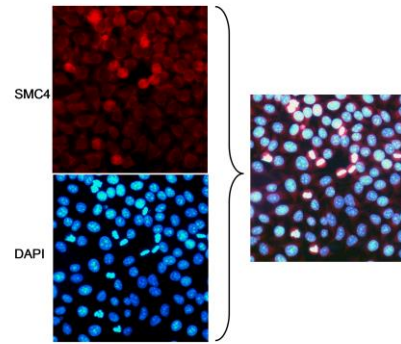


<b>APPLICATIONS</b>	WB, ICC-IF				
<b>SPECIES REACTIVITY</b>	Human				
<b>PRESUMED REACTIVITY</b>	Based on 100% sequence identity, this antibody is predicted to react with Mouse				
<b>AMOUNT</b>	100 µl				
<b>CONCENTRATION</b>	1000 µg/ml				
<b>STORAGE/SHELF LIFE</b>	2 - 8° C / 1 year from date of receipt				
<b>PHYSICAL STATE</b>	Liquid				
<b>BUFFER</b>	Tris-citrate/phosphate buffer, pH 7 to 8 containing 0.09% Sodium Azide				
<b>ISOTYPE</b>	IgG				
<b>ORIGIN</b>	USA				
<b>PRODUCTION PROCEDURES</b>	<p>Antibody was affinity purified using an epitope specific to SMC4 immobilized on solid support.</p> <p>The epitope recognized by A300-063A maps to a region between residues 600 and 650 of human Structural Maintenance of Chromosomes 4 using the numbering given in entry NP_005487.2 (GeneID 10051).</p> <p>Immunoglobulin concentration was determined by extinction coefficient: absorbance at 280 nm of 1.4 equals 1.0 mg of IgG.</p>				
<b>APPLICATIONS</b>	<p>Centrifuge tube to remove product from lid. Optimal working dilutions should be determined experimentally by the investigator. Prepare working dilution immediately before use.</p> <table><tr><td>Western Blot</td><td>1:1,000 - 1:10,000</td></tr><tr><td>Immunofluorescence (ICC)</td><td>1:500 - 1:2,000</td></tr></table>	Western Blot	1:1,000 - 1:10,000	Immunofluorescence (ICC)	1:500 - 1:2,000
Western Blot	1:1,000 - 1:10,000				
Immunofluorescence (ICC)	1:500 - 1:2,000				
<b>APPLICATION NOTES</b>	Western blot of lysates performed using standard western blot reagents and 4-8% SDS-PAGE.				
<b>ADDITIONAL INFO</b>	<p><a href="https://www.bethyl.com/product/A300-063A">https://www.bethyl.com/product/A300-063A</a></p> <p>Use the link above to view SDS, a current list of citations, and other product specific information.</p>				

This document certifies that this product has met all of the quality control standards defined by Bethyl Laboratories, Inc.  
Eric McIntush, PhD | Chief Scientific Officer Date: June 24, 2019



**Detection of human SMC4 by western blot.** *Samples:* Whole cell lysate (50  $\mu$ g) from HeLa and HEK293T cells prepared using NETN lysis buffer. *Antibodies:* Affinity purified rabbit anti-SMC4 antibody A300-063A (lot A300-063A-2) used for WB at 0.1  $\mu$ g/ml. *Detection:* Chemiluminescence with an exposure time of 10 seconds.



**Localization of SMC4 to Mitotic Chromosomes by immunocytochemistry.** *Samples:* HeLa cells grown on coverslips, fixed with methanol/acetone and blocked with 3% BSA in PBS. *Antibody:* Affinity purified rabbit anti-SMC4 antibody A300-063A used at 5  $\mu$ g/ml. *Detection:* Rhodamine labeled anti-rabbit secondary antibody. Cells were counterstained with DAPI.